



**Connells**

Caernarvon Crescent  
Bletchley Milton Keynes



# Caernarvon Crescent Bletchley Milton Keynes MK3 7DP

for sale  
**£300,000**



## Property Description

Located in a quiet cul-de-sac in West Bletchley is this well-presented three-bedroom mid-terraced property. This property benefits from a generous rear garden making it the ideal purchase for first time buyers and young families. Perfect for those looking for a home that is move-in ready, Other benefits include the properties' location, with West Bletchley being within close proximity to schools and shops as well as offering easy access to transport links such as Bletchley mainline train station as well as the A5 and M1 road links.

Accommodation comprises entrance porch, hallway, living/ dining room, kitchen, cloakroom, first floor landing, three bedrooms and a family shower room. Outside there is a generous rear garden.

## Lounge

20' 8" x 10' 5" ( 6.30m x 3.17m )

## Kitchen

9' 4" x 9' 2" ( 2.84m x 2.79m )

## Cloakroom

## Bedroom One

12' 3" x 10' 6" ( 3.73m x 3.20m )

## Bedroom Two

8' 5" x 10' 4" ( 2.57m x 3.15m )

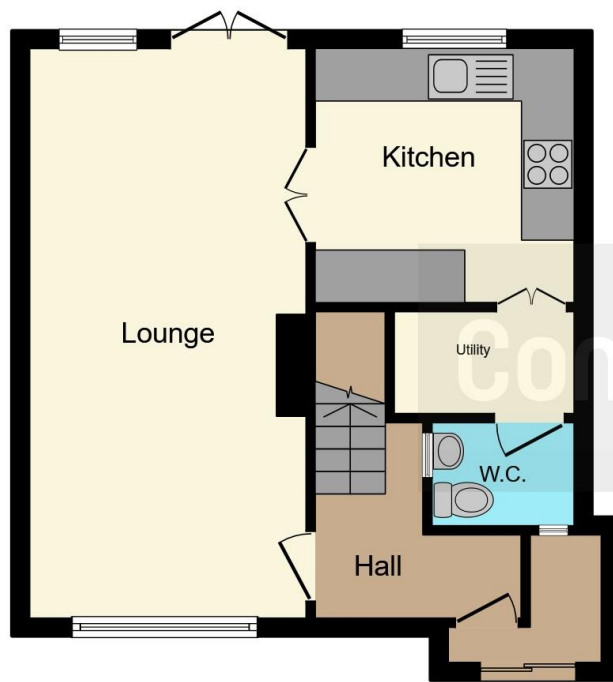
## Bedroom Three

6' 3" x 12' 8" ( 1.91m x 3.86m )

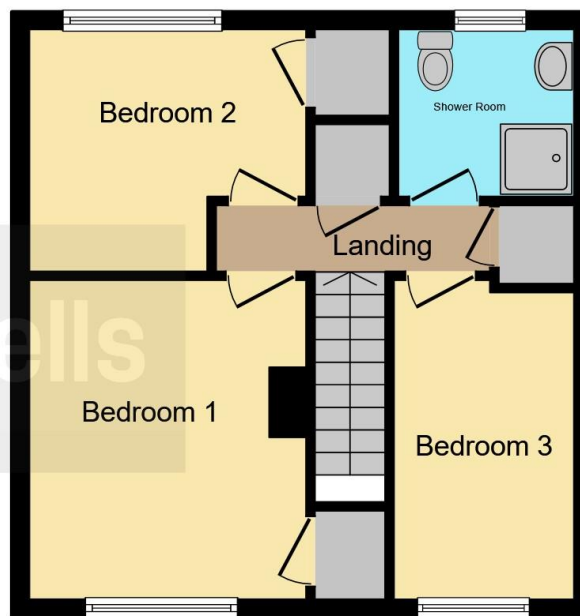
## Bathroom







**Ground Floor**



**First Floor**

This floor plan is for illustrative purposes only. It is not drawn to scale. Any measurements, floor areas (including any total floor area), openings and orientation are approximate. No details are guaranteed, they cannot be relied upon for any purpose and they do not form part of any agreement. No liability is taken for any error, omission or misstatement. A party must rely upon its own inspection(s). Powered by [www.focalagent.com](http://www.focalagent.com)

To view this property please contact Connells on

**T 01908 375 241**  
**E [bletchley@connells.co.uk](mailto:bletchley@connells.co.uk)**

188 Queensway Bletchley  
 MILTON KEYNES MK2 2SW

EPC Rating: D Council Tax  
 Band: B

**view this property online [connells.co.uk/Property/BLE310857](http://connells.co.uk/Property/BLE310857)**



Tenure: Freehold



1. MONEY LAUNDERING REGULATIONS Intending purchasers will be asked to produce identification documentation at a later stage and we would ask for your co-operation in order that there will be no delay in agreeing the sale. 2. These particulars do not constitute part or all of an offer or contract. 3. The measurements indicated are supplied for guidance only and as such must be considered incorrect. Potential buyers are advised to recheck measurements before committing to any expense. 4. We have not tested any apparatus, equipment, fixtures, fittings or services and it is in the buyers interest to check the working condition of any appliances.

Connells Residential is registered in England and Wales under company number 1489613, Registered Office is Cumbria House, 16-20 Hockliffe Street, Leighton Buzzard, Bedfordshire, LU7 1GN. VAT Registration Number is 500 2481 05.

**See all our properties at [www.connells.co.uk](http://www.connells.co.uk) | [www.rightmove.co.uk](http://www.rightmove.co.uk) | [www.zoopla.co.uk](http://www.zoopla.co.uk)**

Property Ref: BLE310857 - 0005