



**Connells**

Tyne Square  
Bletchley Milton Keynes



### Property Description

Situated on the desirable rivers estate within Bletchley, this extended four-bedroom end of terraced home offers versatile family living.

On the ground floor you have an entrance porch, a cozy lounge living area situated at the front of the house with feature fireplace and is open to the kitchen dining room which offers the perfect area for eating and dining and socialising as has patio doors on to the rear garden and decking area.

Also on the ground floor is bedroom four/study which has an ensuite shower room adding extra convenience.

Upstairs in this family home you will find three further bedrooms and a shared family bathroom.

The property has the added benefit of front and rear gardens and there is a garage with off road parking.

### Entrance Hall

#### Lounge

14' 8" x 13' 9" ( 4.47m x 4.19m )

#### Kitchen

14' 7" x 11' 1" ( 4.45m x 3.38m )

#### Bedroom One

16' 4" x 8' 6" ( 4.98m x 2.59m )

#### Bedroom Two

8' 6" x 9' ( 2.59m x 2.74m )

#### Bedroom Three

11' 2" x 6' ( 3.40m x 1.83m )

#### Bedroom Four

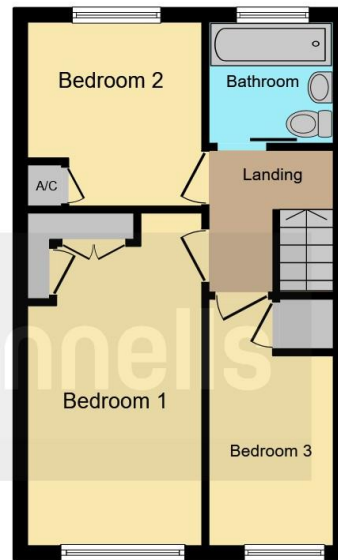
14' 5" x 7' 7" ( 4.39m x 2.31m )

#### Garage

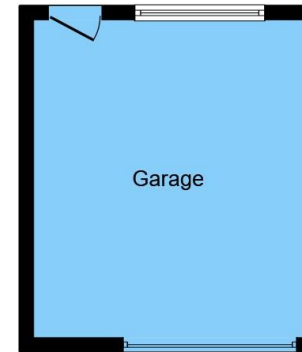




**Ground Floor**



**First Floor**



**Garage**



This floor plan is for illustrative purposes only. It is not drawn to scale. Any measurements, floor areas (including any total floor area), openings and orientation are approximate. No details are guaranteed, they cannot be relied upon for any purpose and they do not form part of any agreement. No liability is taken for any error, omission or misstatement. A party must rely upon its own inspection(s). Powered by [www.focalagent.com](http://www.focalagent.com)

To view this property please contact Connells on

**T 01908 375 241**  
**E [bletchley@connells.co.uk](mailto:bletchley@connells.co.uk)**

188 Queensway Bletchley  
 MILTON KEYNES MK2 2SW

**EPC Rating: E**

**view this property online [connells.co.uk/Property/BLE310908](http://connells.co.uk/Property/BLE310908)**

Tenure: Freehold



1. MONEY LAUNDERING REGULATIONS Intending purchasers will be asked to produce identification documentation at a later stage and we would ask for your co-operation in order that there will be no delay in agreeing the sale. 2. These particulars do not constitute part or all of an offer or contract. 3. The measurements indicated are supplied for guidance only and as such must be considered incorrect. Potential buyers are advised to recheck measurements before committing to any expense. 4. We have not tested any apparatus, equipment, fixtures, fittings or services and it is in the buyers interest to check the working condition of any appliances.

Connells Residential is registered in England and Wales under company number 1489613, Registered Office is Cumbria House, 16-20 Hockliffe Street, Leighton Buzzard, Bedfordshire, LU7 1GN. VAT Registration Number is 500 2481 05.

**See all our properties at [www.connells.co.uk](http://www.connells.co.uk) | [www.rightmove.co.uk](http://www.rightmove.co.uk) | [www.zoopla.co.uk](http://www.zoopla.co.uk)**

Property Ref: BLE310908 - 0002