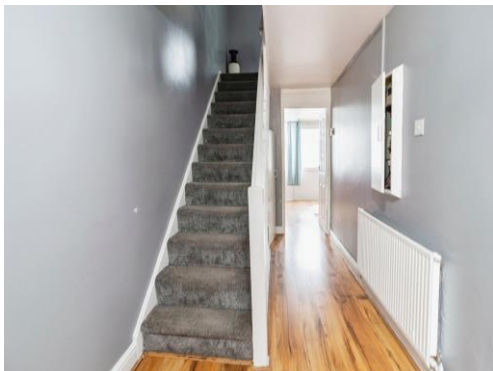




Connells
connells.co.uk 01908 375 241
FOR SALE

Connells

Katrine Place
Bletchley MILTON KEYNES



Property Description

Located in the popular Lakes development, which is currently undergoing substantial redevelopment, is this three bedroom mid-terrace property. In regards to the location, this home is situated within close proximity to local amenities such as schools and shops as well as being located within easy access to transport links such as Bletchley mainline train station and the A5 and M1 road links.

Accommodation comprises entrance hall, kitchen, living room, first floor landing, three bedrooms and a family bathroom. Outside there are gardens to front and rear.

Entrance

Lounge

11' 6" x 14' 11" (3.51m x 4.55m)
Doors to Garden
TV Points
Radiator

Kitchen

17' 4" x 8' 2" (5.28m x 2.49m)
Space for Fridge freezer, washer and space for 5 ring gas burner

Bedroom One

8' 6" x 14' 3" (2.59m x 4.34m)

Bedroom Two

14' 11" x 8' 7" (4.55m x 2.62m)

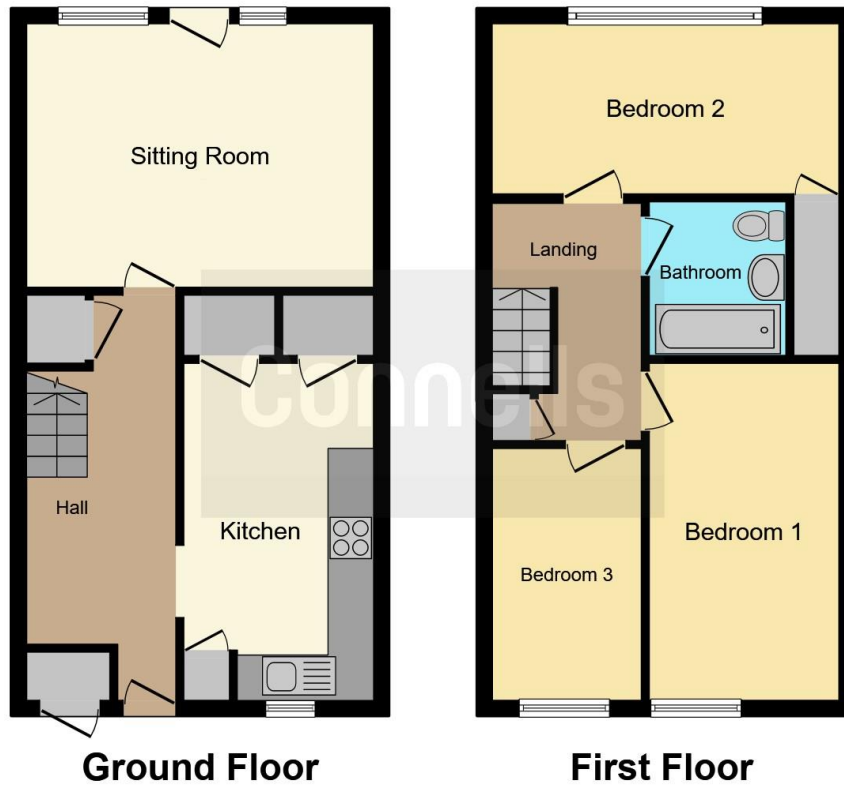
Bedroom Three

11' x 6' 1" (3.35m x 1.85m)

Family Bathroom

Fully Tiled
Wash hand basin
WC
Shower over bath





This floor plan is for illustrative purposes only. It is not drawn to scale. Any measurements, floor areas (including any total floor area), openings and orientation are approximate. No details are guaranteed, they cannot be relied upon for any purpose and they do not form part of any agreement. No liability is taken for any error, omission or misstatement. A party must rely upon its own inspection(s). Powered by www.focalagent.com

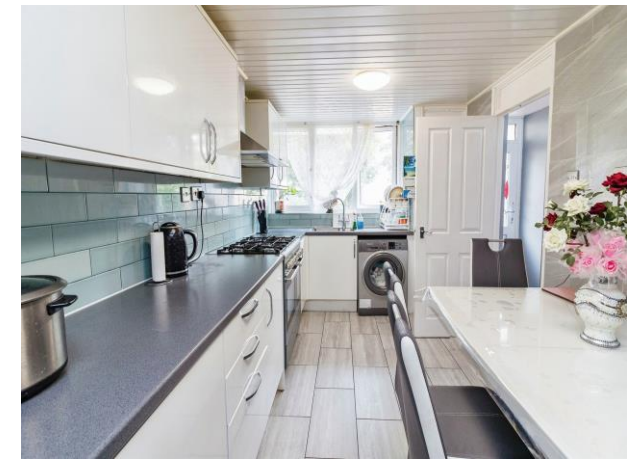
To view this property please contact Connells on

T 01908 375 241
E bletchley@connells.co.uk

188 Queensway Bletchley
 MILTON KEYNES MK2 2SW

EPC Rating: C

view this property online connells.co.uk/Property/BLE310816



Tenure: Freehold



1. MONEY LAUNDERING REGULATIONS Intending purchasers will be asked to produce identification documentation at a later stage and we would ask for your co-operation in order that there will be no delay in agreeing the sale. 2. These particulars do not constitute part or all of an offer or contract. 3. The measurements indicated are supplied for guidance only and as such must be considered incorrect. Potential buyers are advised to recheck measurements before committing to any expense. 4. We have not tested any apparatus, equipment, fixtures, fittings or services and it is in the buyers interest to check the working condition of any appliances.

Connells Residential is registered in England and Wales under company number 1489613, Registered Office is Cumbria House, 16-20 Hockliffe Street, Leighton Buzzard, Bedfordshire, LU7 1GN. VAT Registration Number is 500 2481 05.

See all our properties at www.connells.co.uk | www.rightmove.co.uk | www.zoopla.co.uk

Property Ref: BLE310816 - 0002