



Connells

Victoria Road
Bletchley Milton Keynes



Property Description

A two-bedroom mid-terraced home located in the sought after town of Fenny Stratford.

This property offers cozy living space, and a convenient location close to local shops, schools and transport links. perfect for first time buyers or investors looking for a well maintained easy to manage home in a vibrant community.

On entering the property, you have stairs rising to the first floor and open plan living and kitchen space with access into the enclosed rear garden. On the first floor there are two bedrooms and a family bathroom.

Outside the garden is fully paved and there is a built in shed.

Open Planned Lounge & Kitchen

10' 7" x 22' 5" (3.23m x 6.83m)

Front doors leads into lounge

Open plan lounge and kitchen

Window to front

Gas fire

Chimney Breast

Window to garden

Door leading out into garden

Intergrated electric oven

Gas hob

Space for washing machine, dryer, fridge freezer

Sink with a mixer tap

Landing

Bedroom One

11' 3" x 8' max (3.43m x 2.44m max)

Window to front

Airing cupboard

Bedroom Two

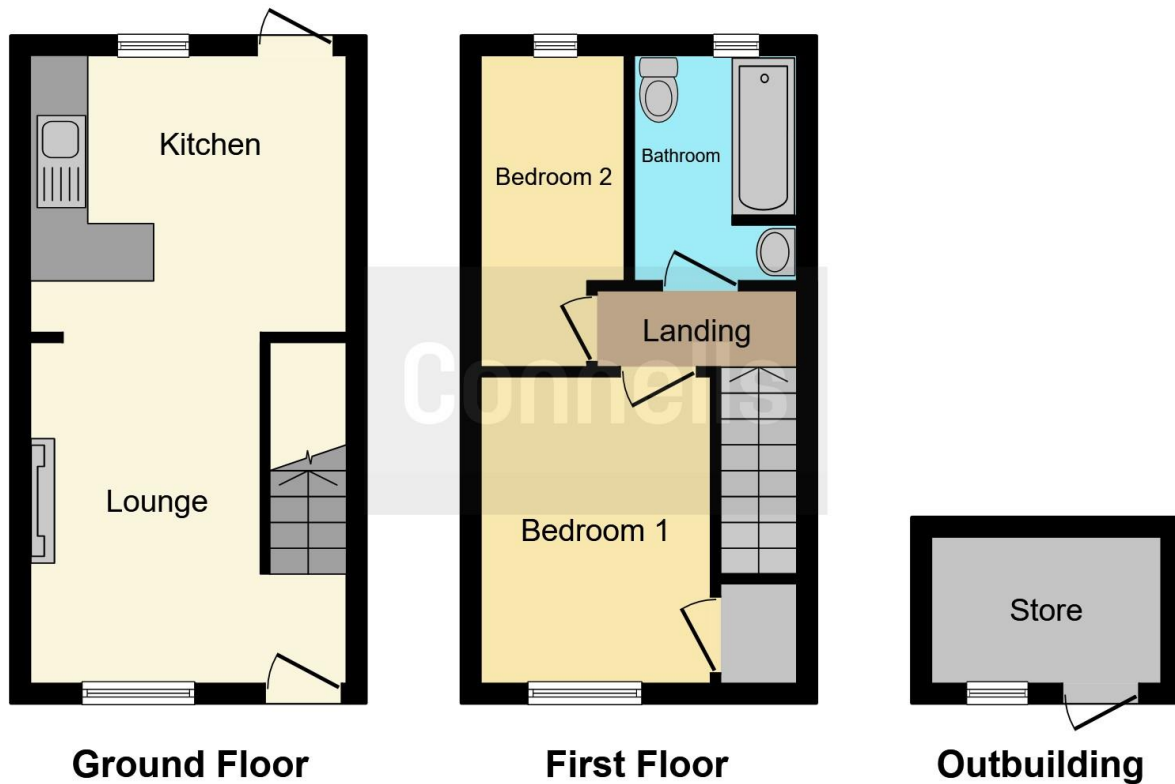
11' x 4' 10" max (3.35m x 1.47m max)

Windor to rear

Bathroom

Rear Garden





This floor plan is for illustrative purposes only. It is not drawn to scale. Any measurements, floor areas (including any total floor area), openings and orientation are approximate. No details are guaranteed, they cannot be relied upon for any purpose and they do not form part of any agreement. No liability is taken for any error, omission or misstatement. A party must rely upon its own inspection(s). Powered by www.focalagent.com

To view this property please contact Connells on

T 01908 375 241
E bletchley@connells.co.uk

188 Queensway Bletchley
 MILTON KEYNES MK2 2SW

EPC Rating: D

view this property online connells.co.uk/Property/BLE310827

Tenure: Freehold



1. MONEY LAUNDERING REGULATIONS Intending purchasers will be asked to produce identification documentation at a later stage and we would ask for your co-operation in order that there will be no delay in agreeing the sale. 2. These particulars do not constitute part or all of an offer or contract. 3. The measurements indicated are supplied for guidance only and as such must be considered incorrect. Potential buyers are advised to recheck measurements before committing to any expense. 4. We have not tested any apparatus, equipment, fixtures, fittings or services and it is in the buyers interest to check the working condition of any appliances.

Connells Residential is registered in England and Wales under company number 1489613, Registered Office is Cumbria House, 16-20 Hockliffe Street, Leighton Buzzard, Bedfordshire, LU7 1GN. VAT Registration Number is 500 2481 05.

See all our properties at www.connells.co.uk | www.rightmove.co.uk | www.zoopla.co.uk

Property Ref: BLE310827 - 0005