



Connells

Galapagos Grove
Newton Leys Milton Keynes

Galapagos Grove Newton Leys Milton Keynes MK3 5RP

for sale offers in excess of
£390,000



Property Description

Located in the highly desired 'Newton Leys' development is this well presented modern four bedroom linked-detached townhouse. Situated over three floors, this property offers the best of modern living with a large master bedroom and en-suite occupying the entirety of the top floor.

In regards to the location, this property benefits from being within close proximity to local amenities such as shops as well as being within easy access to transport links such as Bletchley mainline train station and the A5 and M1 roads.

Accommodation comprises entrance hall, kitchen, living room, downstairs wc, first floor landing, three bedrooms, bathroom, master bedroom and en-suite on the 2nd floor.



Entrance Hall

Laminate flooring. Wall mounted gas radiator. Storage understairs. Coat closet.

Kitchen

11' 3" x 9' 7" (3.43m x 2.92m)

Laminate flooring. Extractor Fan. Double glazed window to front aspect. Wall mounted gas radiator. Four ring gas hob. Integrated dishwasher, washing machine, oven and fridge freezer. Spotlights.

Living Room

15' 3" x 13' 8" (4.65m x 4.17m)

Enter from entrance hall. Laminate flooring. Double door to rear to access the garden. Wall mounted gas radiator.

Downstairs Wc

Enter from entrance hall. Laminate flooring. Extractor fan. Wall mounted gas radiator. WC and Wash-hand basin.

First Floor Landing

Rise from entrance hall. Carpeted flooring. Airing cupboard. Wall mounted gas radiator.

Bedroom Two

11' 1" x 9' 11" (3.38m x 3.02m)

Enter from first floor landing. Carpeted flooring. Double glazed window to rear aspect. Wall mounted gas radiator.

Bedroom Three

10' 8" x 9' 1" (3.25m x 2.77m)

Enter from first floor landing. Carpeted flooring. Double glazed window to front aspect. Wall mounted gas radiator.

Bedroom Four

11' 1" x 5' 11" (3.38m x 1.80m)

Enter from first floor landing. Carpeted flooring. Double glazed window to rear aspect. Wall mounted gas radiator.

Bathroom

Enter from first floor landing. Tiled flooring. Extractor fan. Spotlights. Wall mounted gas radiator. Wc, wash-hand basin and bath with shower.

Master Bedroom

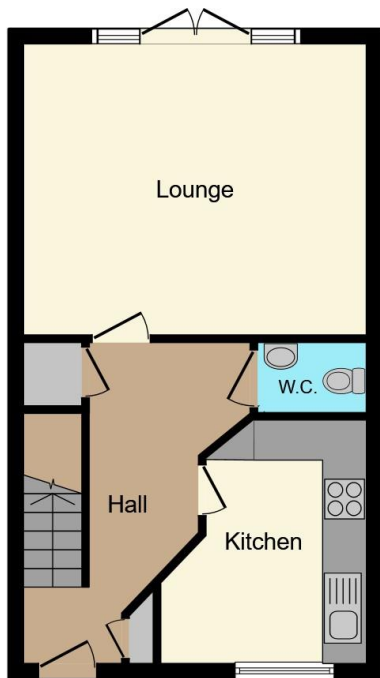
19' 2" x 10' 9" (5.84m x 3.28m)

Rise from first floor landing. Carpeted flooring. Double glazed skylight window to rear aspect. Double glazed window to front aspect. Built-in wardrobe. Wall mounted gas radiator.

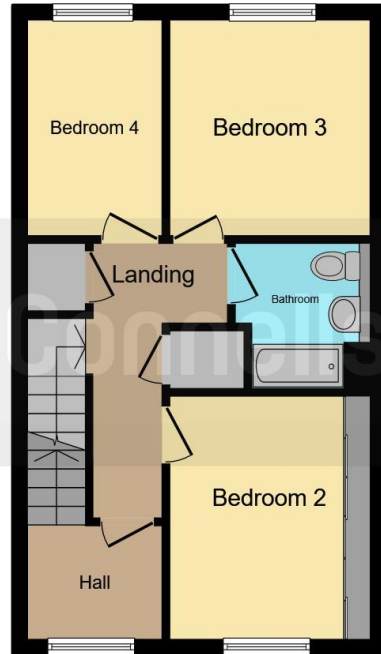
En-Suite

Enter from master bedroom. Tiled flooring. Spotlights. Extractor fan. Double glazed skylight window to rear aspect. Walk-in shower, wc and wash-hand basin.

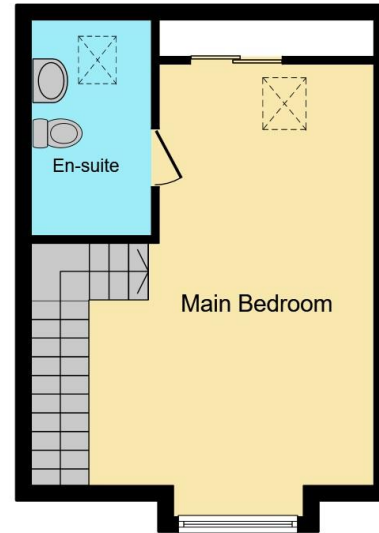




Ground Floor



First Floor



Second Floor



This floorplan is for illustrative purposes only and is not drawn to scale. Measurements, floor-areas, openings and orientations are approximate. They should not be relied upon for any purpose and do not form any part of an agreement. No liability is taken for any error or mis-statement. All parties must rely on their own inspections.

To view this property please contact Connells on

T 01908 375 241
E bletchley@connells.co.uk

188 Queensway Bletchley
 MILTON KEYNES MK2 2SW

EPC Rating: B

[view this property online connells.co.uk/Property/BLE310491](http://connells.co.uk/Property/BLE310491)

Tenure: Freehold



1. MONEY LAUNDERING REGULATIONS Intending purchasers will be asked to produce identification documentation at a later stage and we would ask for your co-operation in order that there will be no delay in agreeing the sale. 2. These particulars do not constitute part or all of an offer or contract. 3. The measurements indicated are supplied for guidance only and as such must be considered incorrect. Potential buyers are advised to recheck measurements before committing to any expense. 4. We have not tested any apparatus, equipment, fixtures, fittings or services and it is in the buyers interest to check the working condition of any appliances.

Connells Residential is registered in England and Wales under company number 1489613, Registered Office is Cumbria House, 16-20 Hockliffe Street, Leighton Buzzard, Bedfordshire, LU7 1GN. VAT Registration Number is 500 2481 05.

See all our properties at www.connells.co.uk | www.rightmove.co.uk | www.zoopla.co.uk

Property Ref: BLE310491 - 0006