



**Connells**

The Mount  
Simpson Milton Keynes



### Property Description

Over 55's. This well presented ground floor apartment is situated within Simpson, and the property boasts open plan living, entrance hall with two large storage cupboards, a fully fitted kitchen, bathroom and the property has it's own private south facing patio overlooking the communal gardens and also has communal parking on site.

The Mount also offers numerous communal facilities and a guest bedroom for any potential visitors. In brief to comprise of:- Entrance hall, open plan lounge/ kitchen / diner, one bedroom, bathroom, parking and communal gardens.

Call Connells today to view this property.

### Entrance Hall

Entrance hall has two large double storage cupboards

### Lounge

14' 6" x 12' 9" ( 4.42m x 3.89m )

### Kitchen

7' 6" x 7' 5" ( 2.29m x 2.26m )

### Bedroom 1

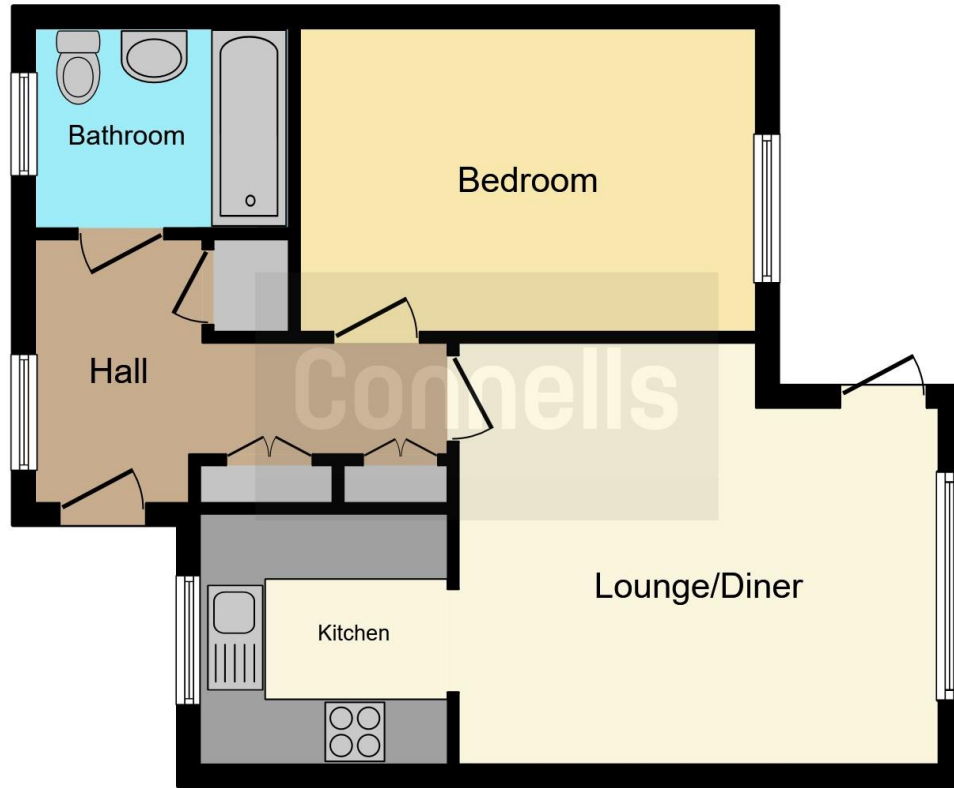
13' 8" x 9' 1" ( 4.17m x 2.77m )

### Bathroom

7' 7" x 6' 1" ( 2.31m x 1.85m )







This floorplan is for illustrative purposes only and is not drawn to scale. Measurements, floor-areas, openings and orientations are approximate. They should not be relied upon for any purpose and do not form any part of an agreement. No liability is taken for any error or mis-statement. All parties must rely on their own inspections.

To view this property please contact Connells on

**T 01908 375 241**  
**E [bletchley@connells.co.uk](mailto:bletchley@connells.co.uk)**

188 Queensway Bletchley  
 MILTON KEYNES MK2 2SW

**EPC Rating: D**

**view this property online [connells.co.uk/Property/BLE310100](http://connells.co.uk/Property/BLE310100)**

This is a Leasehold property with details as follows; Term of Lease 99 years from 08 May 1987. Should you require further information please contact the branch. Please Note additional fees could be incurred for items such as Leasehold packs.



Tenure: Leasehold



1. MONEY LAUNDERING REGULATIONS Intending purchasers will be asked to produce identification documentation at a later stage and we would ask for your co-operation in order that there will be no delay in agreeing the sale. 2. These particulars do not constitute part or all of an offer or contract. 3. The measurements indicated are supplied for guidance only and as such must be considered incorrect. Potential buyers are advised to recheck measurements before committing to any expense. 4. We have not tested any apparatus, equipment, fixtures, fittings or services and it is in the buyers interest to check the working condition of any appliances.

Connells Residential is registered in England and Wales under company number 1489613, Registered Office is Cumbria House, 16-20 Hockliffe Street, Leighton Buzzard, Bedfordshire, LU7 1GN. VAT Registration Number is 500 2481 05.

**See all our properties at [www.connells.co.uk](http://www.connells.co.uk) | [www.rightmove.co.uk](http://www.rightmove.co.uk) | [www.zoopla.co.uk](http://www.zoopla.co.uk)**

Property Ref: BLE310100 - 0003