

for sale

£375,000



## Chestnut Crescent Bletchley Milton Keynes MK2 2JZ

Located in the highly sought after 'Trees' development of Bletchley is this stunning 3 bedroom semi-detached property. This property is situated within close proximity to local amenities such as schools and shops, and also offers easy access to commuter links such as the train station, bus station a





# Chestnut Crescent Bletchley Milton Keynes MK2 2JZ

## Entrance Hall

### Lounge

12' 10" x 10' 9" ( 3.91m x 3.28m )

### Dining Room

10' 1" x 8' ( 3.07m x 2.44m )

### Kitchen

10' 5" x 10' 1" ( 3.17m x 3.07m )

### Office

8' 5" x 5' 2" ( 2.57m x 1.57m )

### First Floor Landing

### Bedroom One

12' 9" x 10' 9" ( 3.89m x 3.28m )

### Bedroom Two

12' 9" x 10' 3" ( 3.89m x 3.12m )

### Bedroom Three

8' 1" x 7' 7" ( 2.46m x 2.31m )

### Bathroom





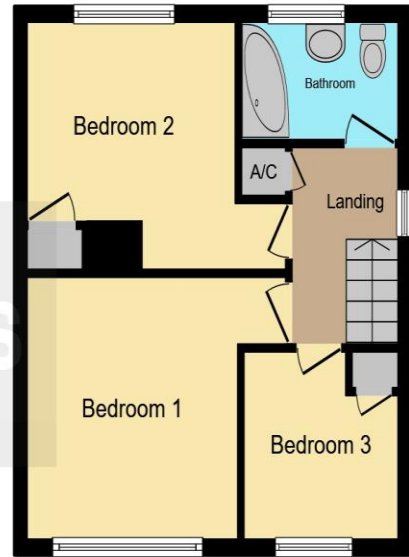








**Ground Floor**



**First Floor**

This floorplan is for illustrative purposes only and is not drawn to scale. Measurements, floor-areas, openings and orientations are approximate. They should not be relied upon for any purpose and do not form any part of an agreement. No liability is taken for any error or mis-statement. All parties must rely on their own inspections.

To view this property please contact Connells on

**T 01908 375 241**  
**E [bletchley@connells.co.uk](mailto:bletchley@connells.co.uk)**

188 Queensway Bletchley  
MILTON KEYNES MK2 2SW

Property Ref: BLE310110 - 0002

**Tenure:** Freehold

**EPC Rating:** D

**view this property online [connells.co.uk/Property/BLE310110](http://connells.co.uk/Property/BLE310110)**



1. MONEY LAUNDERING REGULATIONS Intending purchasers will be asked to produce identification documentation at a later stage and we would ask for your co-operation in order that there will be no delay in agreeing the sale. 2. These particulars do not constitute part or all of an offer or contract. 3. The measurements indicated are supplied for guidance only and as such must be considered incorrect. Potential buyers are advised to recheck measurements before committing to any expense. 4. We have not tested any apparatus, equipment, fixtures, fittings or services and it is in the buyers interest to check the working condition of any appliances.

Connells Residential is registered in England and Wales under company number 1489613, Registered Office is Cumbria House, 16-20 Hockliffe Street, Leighton Buzzard, Bedfordshire, LU7 1GN. VAT Registration Number is 500 2481 05.

see all our properties at [www.connells.co.uk](http://www.connells.co.uk) | [www.rightmove.co.uk](http://www.rightmove.co.uk) | [www.zoopla.co.uk](http://www.zoopla.co.uk)