



**Connells**

Glebe Road  
Deanshanger Milton Keynes



# Glebe Road Deanshanger Milton Keynes MK19 6NB

for sale  
£385,000



## Property Description

A three bedroom semi detached family home with garage in the sought after village of Deanshanger. This spacious property that offers generous living space, off-road parking for two cars and partially converted single garage. Three good size bedrooms, enclosed rear garden, with EXTENDED KITCHEN / FAMILY ROOM. \*\*\*VIEWING IS HIGHLY RECOMMENDED\*\*\*.

Deanshanger is a village situated between Milton Keynes and Buckingham, with easy access to the A422 and A5. The village features a doctor's surgery, library, a community centre, and a village hall. A primary school and a high school are additional advantages. A parish church, a Methodist chapel, a post office, a bar, and two members' clubs are all nearby. A community centre has stores like a pharmacy, hair salon, takeout, and newsagents. On the High Street, there is a Co-operative Food Store and bus stops with routes to Milton Keynes City and surrounding localities.

## Entrance Porch

Storage cupboard. Door to accommodation.

## Living Room

17' 5" x 11' 11" ( 5.31m x 3.63m )

Double Glazed window to front. Stairs raising to first floor. Herringbone style wood laminate flooring. Upright radiator.

## Study / Play Room

11' 1" x 8' 10" ( 3.38m x 2.69m )

Radiator

## Kitchen / Dining Room

26' 3" x 11' 4" ( 8.00m x 3.45m )

Patio doors to garden. 2 x double glazed windows to rear. Ceramic floor tiling leading into Herringbone wood laminate flooring. Radiator. Range of wall and base units, Integrated appliances to include Hob, Oven and Grill, Dishwasher, Washing machine, Fridge/ freezer and Wine rack. Stainless Steel Sink and Drainer.

## Bedroom 1

11' 7" x 9' 3" ( 3.53m x 2.82m )

Double glazed window to front. Built in Wardrobes. Radiator.

## Bedroom 2

10' 2" x 9' 3" ( 3.10m x 2.82m )

Double glazed window to rear. Built in storage cupboard. Radiator.

## Bedroom 3

8' 8" x 8' 2" ( 2.64m x 2.49m )

Double glazed window to front. Radiator.

## Bathroom

8' 2" x 5' 5" ( 2.49m x 1.65m )

Bath with overhead shower and glass shower screen. Closed WC and Sink Unit. Frosted Double Glazed window to rear.

## Outside

## Rear Garden

Mainly laid to lawn with large patio.

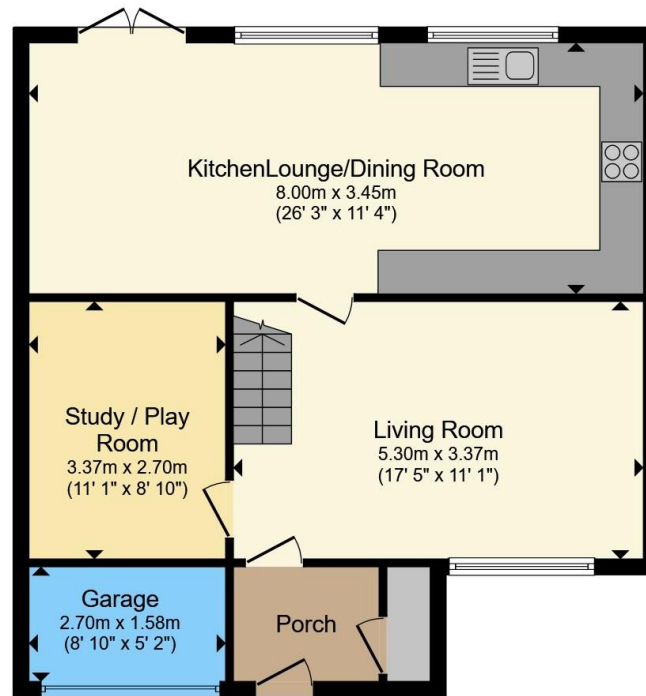




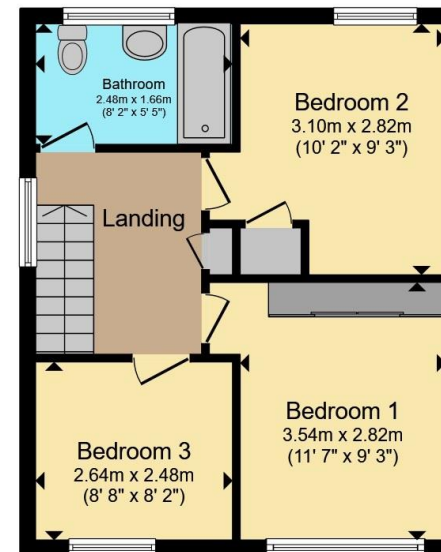








**Ground Floor**



**First Floor**

Total floor area 108.8 m<sup>2</sup> (1,171 sq.ft.) approx

This floor plan is for illustrative purposes only. It is not drawn to scale. Any measurements, floor areas (including any total floor area), openings and orientation are approximate. No details are guaranteed, they cannot be relied upon for any purpose and they do not form part of any agreement. No liability is taken for any error, omission or misstatement. A party must rely upon its own inspection(s). Powered by [www.propertybox.io](http://www.propertybox.io)

**Connells**

To view this property please contact Connells on

**T 01908 563 993**  
**E [stonystatford@connells.co.uk](mailto:stonystatford@connells.co.uk)**

82 High Street Stony Stratford  
MILTON KEYNES MK11 1AH

EPC Rating: D Council Tax  
Band: C

Tenure: Freehold

**view this property online [connells.co.uk/Property/SSD307650](http://connells.co.uk/Property/SSD307650)**



1. MONEY LAUNDERING REGULATIONS Intending purchasers will be asked to produce identification documentation at a later stage and we would ask for your co-operation in order that there will be no delay in agreeing the sale. 2. These particulars do not constitute part or all of an offer or contract. 3. The measurements indicated are supplied for guidance only and as such must be considered incorrect. Potential buyers are advised to recheck measurements before committing to any expense. 4. We have not tested any apparatus, equipment, fixtures, fittings or services and it is in the buyers interest to check the working condition of any appliances.

Connells Residential is registered in England and Wales under company number 1489613, Registered Office is Cumbria House, 16-20 Hockliffe Street, Leighton Buzzard, Bedfordshire, LU7 1GN. VAT Registration Number is 500 2481 05.

**See all our properties at [www.connells.co.uk](http://www.connells.co.uk) | [www.rightmove.co.uk](http://www.rightmove.co.uk) | [www.zoopla.co.uk](http://www.zoopla.co.uk)**

Property Ref: SSD307650 - 0004