

for sale

£400,000



## Portfields Road Newport Pagnell MK16 8BT

Connells are pleased to bring to the market a three-bedroom Semi-detached bungalow in the sought after area of Newport Pagnell.





# Portfields Road Newport Pagnell MK16 8BT

## Entrance Porch

Double glazed front door. Double doors to entrance hall.

## Entrance Hall.

Doors to bedrooms, bathroom and lounge. Opening to kitchen. Storage cupboard. Radiator.

## Lounge.

14' 2" x 10' 11" ( 4.32m x 3.33m )

Carpet. Radiator. Double glazed windows.

## Kitchen

14' 9" x 12' ( 4.50m x 3.66m )

Mixture of wall and base level units. Induction hob. Radiator. Stainless steal sink drainer with mixer taps. Vinyl flooring.

## Bedroom One/Dining Room.

12' 8" x 11' 6" ( 3.86m x 3.51m )

Carpet. Radiator. Double glazed window to garden room.

## Bedroom Two

10' 10" x 8' 8" ( 3.30m x 2.64m )

Carpet. Radiator. Double Glazed window.

## Bedroom Three

9' 9" x 7' 9" ( 2.97m x 2.36m )

Carpet. Double glazed window. Radiator.

## Bathroom

Heated Towel Rail. Bath with mixer taps and a shower fitting attached. Tiled splashback. W/C. Wash hand basin with mixer taps. Double glazed window.

## Rear Garden.

Enclosed. Paved.

## Parking

Driveway for several cars. Garage.

## Garage.

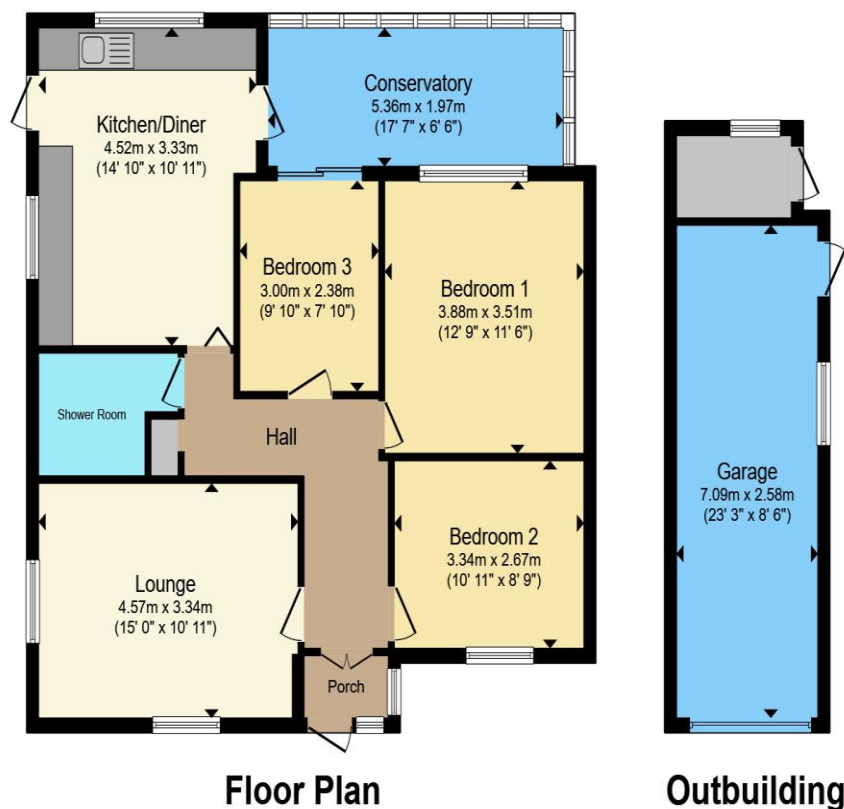












Total floor area 110.0 m<sup>2</sup> (1,184 sq.ft.) approx

This floor plan is for illustrative purposes only. It is not drawn to scale. Any measurements, floor areas (including any total floor area), openings and orientation are approximate. No details are guaranteed, they cannot be relied upon for any purpose and they do not form part of any agreement. No liability is taken for any error, omission or misstatement. A party must rely upon its own inspection(s). Powered by [www.propertybox.io](http://www.propertybox.io)

**Connells**

To view this property please contact Connells on

**T 01908 610 805**  
**E [newportpagnell@connells.co.uk](mailto:newportpagnell@connells.co.uk)**

91 High Street Newport Pagnell  
 MILTON KEYNES MK16 8EN

Property Ref: NPA306639 - 0002

Tenure: Freehold EPC Rating: C

Council Tax Band: C

**view this property online [connells.co.uk/Property/NPA306639](http://connells.co.uk/Property/NPA306639)**



1. MONEY LAUNDERING REGULATIONS Intending purchasers will be asked to produce identification documentation at a later stage and we would ask for your co-operation in order that there will be no delay in agreeing the sale. 2. These particulars do not constitute part or all of an offer or contract. 3. The measurements indicated are supplied for guidance only and as such must be considered incorrect. Potential buyers are advised to recheck measurements before committing to any expense. 4. We have not tested any apparatus, equipment, fixtures, fittings or services and it is in the buyers interest to check the working condition of any appliances.

Connells Residential is registered in England and Wales under company number 1489613, Registered Office is Cumbria House, 16-20 Hockliffe Street, Leighton Buzzard, Bedfordshire, LU7 1GN. VAT Registration Number is 500 2481 05.

see all our properties at [www.connells.co.uk](http://www.connells.co.uk) | [www.rightmove.co.uk](http://www.rightmove.co.uk) | [www.zoopla.co.uk](http://www.zoopla.co.uk)