

for sale

£325,000



## Carroll Close Newport Pagnell MK16 8QQ

Connells are pleased to bring to the market a three bedroom mid-terraced home in the much sought after market town of Newport Pagnell.





# Carroll Close Newport Pagnell MK16 8QQ

## Porch

Front door.

## Lounge

16' 7" x 14' 2" ( 5.05m x 4.32m )

Good size room. Window to front aspect. Door leading to kitchen.

## Kitchen/Dining Room

14' 2" x 8' 7" ( 4.32m x 2.62m )

Mixture of wall and base level units. Sink drainer. Space for appliances. Oven with hob. Window to rear aspect. Door leading to conservatory.

## Conservatory

10' 6" x 7' 6" ( 3.20m x 2.29m )

Windows to side aspects. Door leading to rear garden.

## Bedroom One

12' 6" x 8' 9" ( 3.81m x 2.67m )

Window to rear aspect. Sliding doors wardrobe.

## Bedroom Two

13' x 7' ( 3.96m x 2.13m )

Window to front aspect. Sliding doors wardrobe.

## Bedroom Three

8' 9" x 6' 8" ( 2.67m x 2.03m )

Window to front aspect.

## Bathroom













This floor plan is for illustrative purposes only. It is not drawn to scale. Any measurements, floor areas (including any total floor area), openings and orientation are approximate. No details are guaranteed, they cannot be relied upon for any purpose and they do not form part of any agreement. No liability is taken for any error, omission or misstatement. A party must rely upon its own inspection(s). Powered by [www.focalagent.com](http://www.focalagent.com)

To view this property please contact Connells on

**T 01908 610 805**  
**E [newportpagnell@connells.co.uk](mailto:newportpagnell@connells.co.uk)**

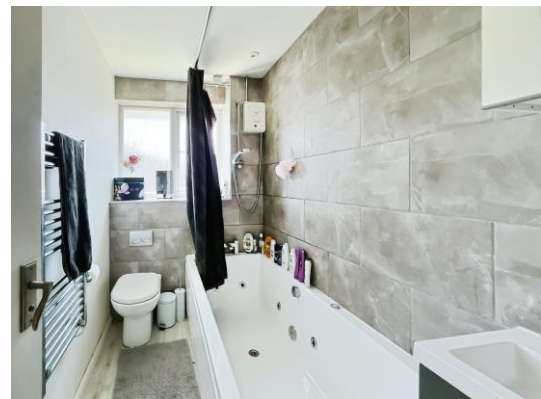
91 High Street Newport Pagnell  
 MILTON KEYNES MK16 8EN

Property Ref: NPA306352 - 0004

Tenure: Freehold EPC Rating: Awaited

Council Tax Band: B

**view this property online [connells.co.uk/Property/NPA306352](http://connells.co.uk/Property/NPA306352)**



1. MONEY LAUNDERING REGULATIONS Intending purchasers will be asked to produce identification documentation at a later stage and we would ask for your co-operation in order that there will be no delay in agreeing the sale. 2. These particulars do not constitute part or all of an offer or contract. 3. The measurements indicated are supplied for guidance only and as such must be considered incorrect. Potential buyers are advised to recheck measurements before committing to any expense. 4. We have not tested any apparatus, equipment, fixtures, fittings or services and it is in the buyers interest to check the working condition of any appliances.

Connells Residential is registered in England and Wales under company number 1489613, Registered Office is Cumbria House, 16-20 Hockliffe Street, Leighton Buzzard, Bedfordshire, LU7 1GN. VAT Registration Number is 500 2481 05.

see all our properties at [www.connells.co.uk](http://www.connells.co.uk) | [www.rightmove.co.uk](http://www.rightmove.co.uk) | [www.zoopla.co.uk](http://www.zoopla.co.uk)