

for sale

£425,000



Holmes Meadow Redhouse Park Milton Keynes MK14 5GF

Connells are pleased to bring to the market a Three-bedroom semi-detached home set in the much sought after area of Redhouse Park with no onward chain.



Holmes Meadow Redhouse Park Milton Keynes MK14 5GF

Hall

Front door. Doors leading to cloakroom and kitchen/living/dining.

Cloakroom

W/C. Sink. Window.

Kitchen/Dining/Living

Irregular Shaped Room 8' 4" x 5' 1" (2.54m x 1.55m)
Open plan. Kitchen wall and base level units. Sink drainer. Space for appliances. Cupboard. Doors leading to rear garden.

First Floor

Cupboard.

Bedroom One

4' 7" x 2' 8" (1.40m x 0.81m)
Window. Door to ensuite.

Ensuite

Shower. W/C. Sink

Bedroom Two

2' 9" x 3' (0.84m x 0.91m)
Window. Good size room.

Bedroom Three

2' 3" x 2' 8" (0.69m x 0.81m)

Window. Good size room.

Bathroom

Bath shower over. W/C. Sink. Window. Full height tiles.

Rear Garden

Mainly laid to lawn. Patio area. Gated entrance. Shed.

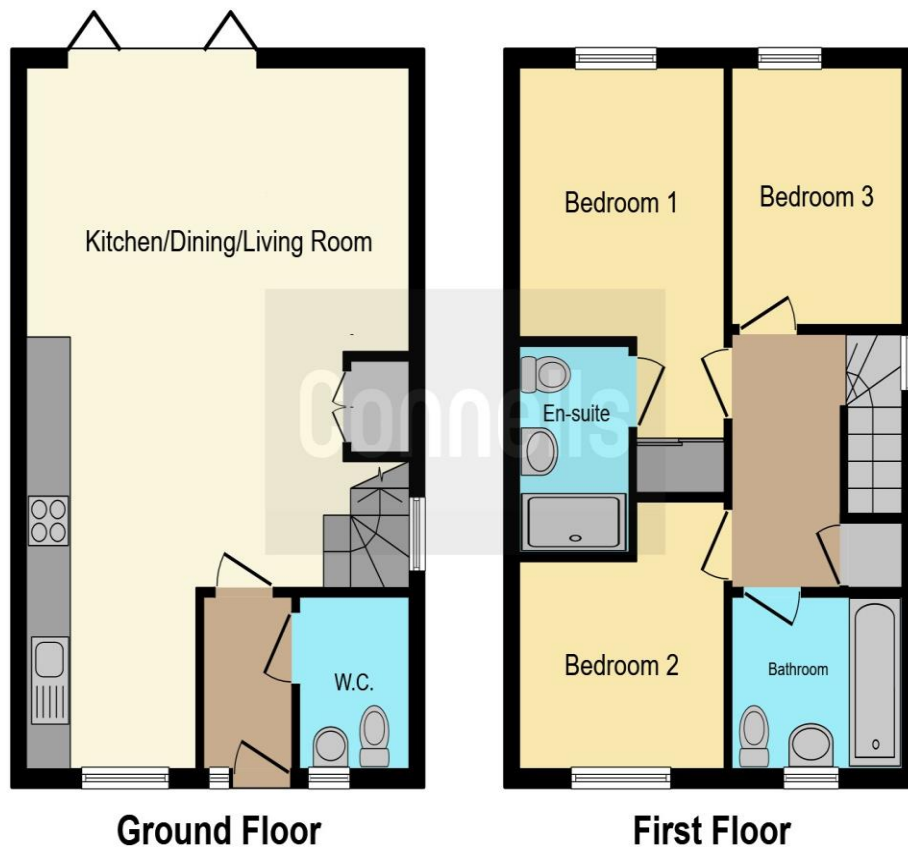
Parking

Car Port. Parking for one vehicle









This floor plan is for illustrative purposes only. It is not drawn to scale. Any measurements, floor areas (including any total floor area), openings and orientation are approximate. No details are guaranteed, they cannot be relied upon for any purpose and they do not form part of any agreement. No liability is taken for any error, omission or misstatement. A party must rely upon its own inspection(s). Powered by www.focalagent.com

To view this property please contact Connells on

T 01908 610 805
E newportpagnell@connells.co.uk

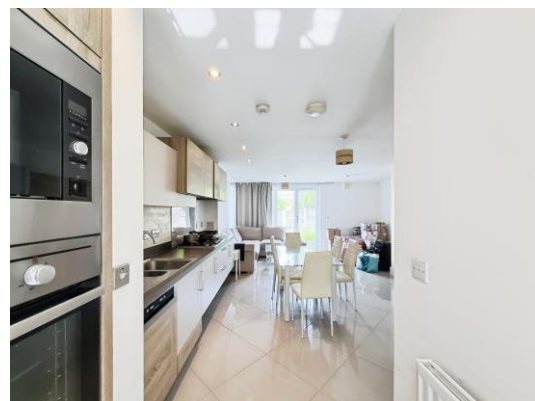
91 High Street Newport Pagnell
 MILTON KEYNES MK16 8EN

Property Ref: NPA306236 - 0002

Tenure: Freehold EPC Rating: B

Council Tax Band: D

view this property online connells.co.uk/Property/NPA306236



1. MONEY LAUNDERING REGULATIONS Intending purchasers will be asked to produce identification documentation at a later stage and we would ask for your co-operation in order that there will be no delay in agreeing the sale. 2. These particulars do not constitute part or all of an offer or contract. 3. The measurements indicated are supplied for guidance only and as such must be considered incorrect. Potential buyers are advised to recheck measurements before committing to any expense. 4. We have not tested any apparatus, equipment, fixtures, fittings or services and it is in the buyers interest to check the working condition of any appliances.

Connells Residential is registered in England and Wales under company number 1489613, Registered Office is Cumbria House, 16-20 Hockliffe Street, Leighton Buzzard, Bedfordshire, LU7 1GN. VAT Registration Number is 500 2481 05.

see all our properties at www.connells.co.uk | www.rightmove.co.uk | www.zoopla.co.uk