

for sale

£400,000



Lodge Gate Great Linford Milton Keynes MK14 5EW

*** SPACIOUS THREE BEDROOM FAMILY HOME *** Lodge Gate is sold with NO UPPER CHAIN and is the perfect property for a family home! Lodge Gate benefits from spacious bedrooms and a wonderful rear size garden!



Lodge Gate Great Linford Milton Keynes MK14 5EW

Living Room

3' 7" x 5' 7" (1.09m x 1.70m)

Front and rear view aspect. Door to the rear garden. Wall mounted radiator.

Kitchen

2' 7" x 3' (0.79m x 0.91m)

Rear view. Electric hob and oven. Wall mounted radiator.

Utility Room

2' 4" x 2' 3" (0.71m x 0.69m)

Door to the rear garden. Plumbing for washing machine and dryer.

Bedroom One

3' 3" x 3' 6" (0.99m x 1.07m)

Front view aspect. Room for storage. Wall mounted radiator.

Bedroom Two

3' x 2' (0.91m x 0.61m)

Rear view. Wall mounted radiator. Spacious bedroom.

Bedroom Three

2' x 2' 8" (0.61m x 0.81m)

Front view aspect. Wall mounted radiator. Storage space.

Family Bathroom

Low level wc. Frosted rear view aspect. Bath.

Rear Garden

Potential to extend (STPP). Mainly laid to lawn. Pond. Shed. Spacious garden.

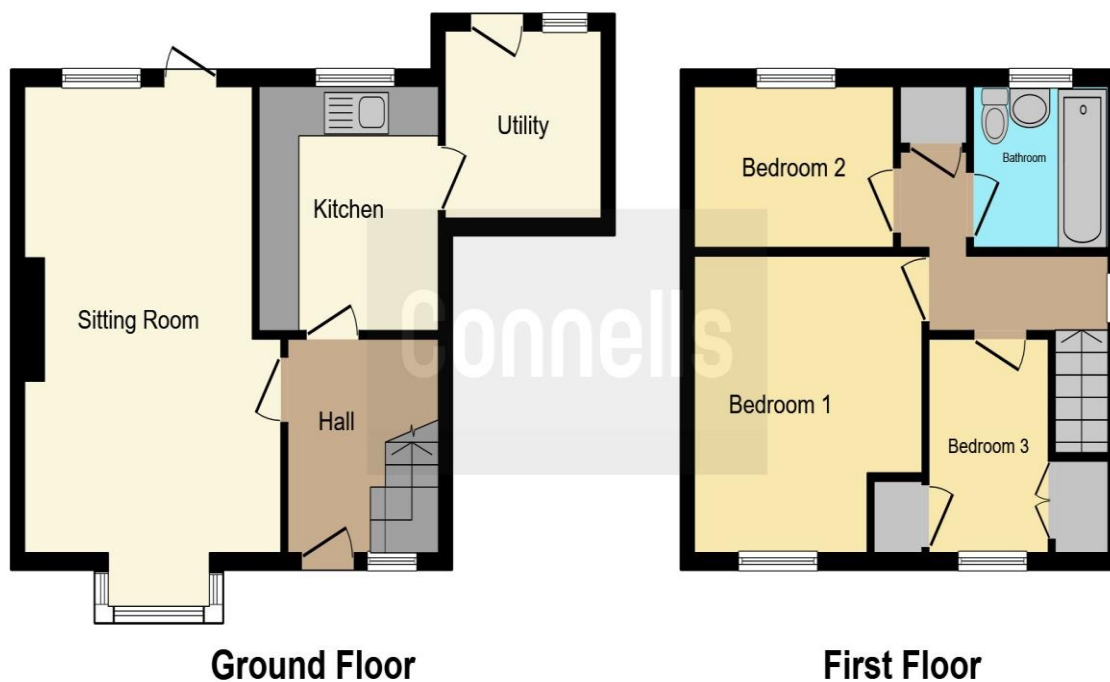
Parking

Single garage and driveway.









This floor plan is for illustrative purposes only. It is not drawn to scale. Any measurements, floor areas (including any total floor area), openings and orientation are approximate. No details are guaranteed, they cannot be relied upon for any purpose and they do not form part of any agreement. No liability is taken for any error, omission or misstatement. A party must rely upon its own inspection(s). Powered by www.focalagent.com

To view this property please contact Connells on

T 01908 610 805
E newportpagnell@connells.co.uk

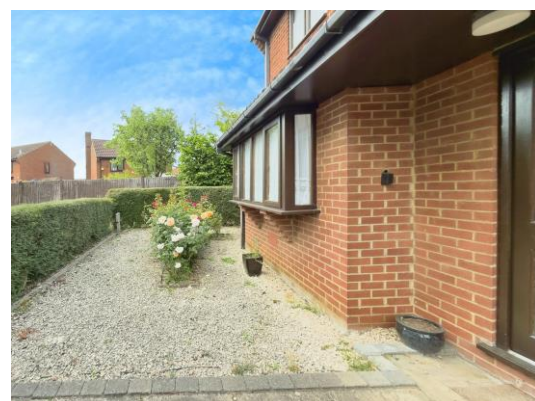
91 High Street Newport Pagnell
 MILTON KEYNES MK16 8EN

Property Ref: NPA306321 - 0004

Tenure: Freehold EPC Rating: Awaited

Council Tax Band: D

view this property online connells.co.uk/Property/NPA306321



1. MONEY LAUNDERING REGULATIONS Intending purchasers will be asked to produce identification documentation at a later stage and we would ask for your co-operation in order that there will be no delay in agreeing the sale. 2. These particulars do not constitute part or all of an offer or contract. 3. The measurements indicated are supplied for guidance only and as such must be considered incorrect. Potential buyers are advised to recheck measurements before committing to any expense. 4. We have not tested any apparatus, equipment, fixtures, fittings or services and it is in the buyers interest to check the working condition of any appliances.

Connells Residential is registered in England and Wales under company number 1489613, Registered Office is Cumbria House, 16-20 Hockliffe Street, Leighton Buzzard, Bedfordshire, LU7 1GN. VAT Registration Number is 500 2481 05.

see all our properties at www.connells.co.uk | www.rightmove.co.uk | www.zoopla.co.uk