

for sale

offers in excess of **£325,000**



## Paggs Court Silver Street Newport Pagnell MK16 0EW

Connells are pleased to offer a 2-bedroom detached house, located in the highly sought-after area of Newport Pagnell. With no onward chain,





# Paggs Court Silver Street Newport Pagnell MK16 0EW

## Entrance Hall

### Living Room

12' 6" x 10' 2" ( 3.81m x 3.10m )

Window to front aspect.

### Dining Room

10' 2" x 9' 6" ( 3.10m x 2.90m )

Window to front aspect. Door to kitchen

### Kitchen

9' 6" x 9' 3" ( 2.90m x 2.82m )

Window to rear aspect. Door to garden. Mixture of wall and base level units. Worksurfaces. Space for appliances.

## Landing

Doors to family bathroom and both bedrooms

### Bedroom One

12' 6" x 10' 2" ( 3.81m x 3.10m )

Window to front aspect

### Bedroom Two

10' 2" x 9' 9" ( 3.10m x 2.97m )

Window to front aspect

## Courtyard Garden

Enclosed rear garden

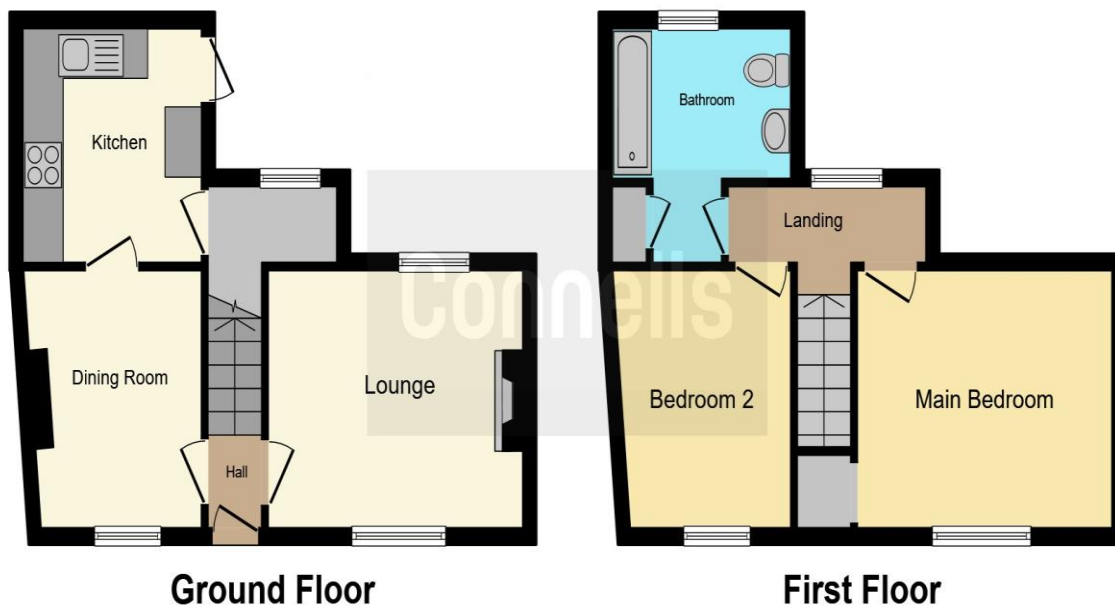












This floor plan is for illustrative purposes only. It is not drawn to scale. Any measurements, floor areas (including any total floor area), openings and orientation are approximate. No details are guaranteed, they cannot be relied upon for any purpose and they do not form part of any agreement. No liability is taken for any error, omission or misstatement. A party must rely upon its own inspection(s). Powered by [www.focalagent.com](http://www.focalagent.com)

To view this property please contact Connells on

**T 01908 610 805**  
**E [newportpagnell@connells.co.uk](mailto:newportpagnell@connells.co.uk)**

91 High Street Newport Pagnell  
 MILTON KEYNES MK16 8EN

Property Ref: NPA305027 - 0004

**Tenure:** Freehold

**EPC Rating:** E

**view this property online** [connells.co.uk/Property/NPA305027](http://connells.co.uk/Property/NPA305027)

1. MONEY LAUNDERING REGULATIONS Intending purchasers will be asked to produce identification documentation at a later stage and we would ask for your co-operation in order that there will be no delay in agreeing the sale. 2. These particulars do not constitute part or all of an offer or contract. 3. The measurements indicated are supplied for guidance only and as such must be considered incorrect. Potential buyers are advised to recheck measurements before committing to any expense. 4. We have not tested any apparatus, equipment, fixtures, fittings or services and it is in the buyers interest to check the working condition of any appliances.

Connells Residential is registered in England and Wales under company number 1489613, Registered Office is Cumbria House, 16-20 Hockliffe Street, Leighton Buzzard, Bedfordshire, LU7 1GN. VAT Registration Number is 500 2481 05.

see all our properties at [www.connells.co.uk](http://www.connells.co.uk) | [www.rightmove.co.uk](http://www.rightmove.co.uk) | [www.zoopla.co.uk](http://www.zoopla.co.uk)