



**Connells**

Hyde Close  
Newport Pagnell



## Property Description

Connells are pleased to bring to the market a four bedroom semi-detached home set in the much sought after pleasant market town of Newport Pagnell. With an enclosed rear garden and off street parking with a garage. The property benefits from excellent school catchments, nearby to all amenities, good road links and public transport. A great opportunity for any buyer.

This semi-detached home that is located in the Market town of Newport Pagnell with close proximity to a range of amenities, schools, shopping facilities and more.

The accommodation offers spacious living arrangements throughout and briefly comprises: an entrance hallway, study, One Accessible ground floor bedroom, very good sized lounge/dinner, a fitted kitchen with a mixture of wall and base level units, a stainless steel sink drainer, an oven with a hob and space for appliances.

To the first floor is an inviting landing with airing cupboard providing extra storage solutions and three good sized bedrooms.

Externally, the property benefits from an enclosed rear garden with an outhouse. There's a large driveway with parking for multiple vehicles, there potential to extend subject to planning approval.

PLEASE CALL CONNELLS TODAY TO ARRANGE AN APPOINTMENT 01908 610 805

### Entrance Porch

Circular window

### Lounge

15' 8" x 24' 4" ( 4.78m x 7.42m )

Open plan large living and dining space. Double glazed window to front aspect. Gas point behind fire place. Stairs raising to first floor.

### Dining Room

7' 2" x 24' 4" ( 2.18m x 7.42m )

Open plan to living room. Double glazed window to rear.

### Reception Three

8' 8" x 7' 11" ( 2.64m x 2.41m )

This is a garage conversion which was done prior to 2010. Downstairs Bedroom Four.

### Kitchen

10' 7" x 7' 2" ( 3.23m x 2.18m )

Mixture of wall and base level units. Stainless steel sink drainer. Spaces for appliances. Double glazed door to garden. Splash back tile all round.

### Study

6' 9" x 7' 11" ( 2.06m x 2.41m )

Radiator. window to front aspect

### First Floor

Access to loft part boarded providing extra storage solutions

### Bedroom One

12' 4" TO WARDROBE x 8' 5" ( 3.76m TO WARDROBE x 2.57m )

Full width built in wardrobe. Double glazed window to front aspect. One radiator.

### Bedroom Two

9' 8" x 8' 5" ( 2.95m x 2.57m )

Radiator. Double glazed window to rear aspect.

### Bedroom Three

9' 1" x 6' 2" ( 2.77m x 1.88m )

Airing cupboard housing the boiler and water tank. Double glazed window to front aspect. Radiator.

### Rear Garden

South Facing Enclosed rear Garden

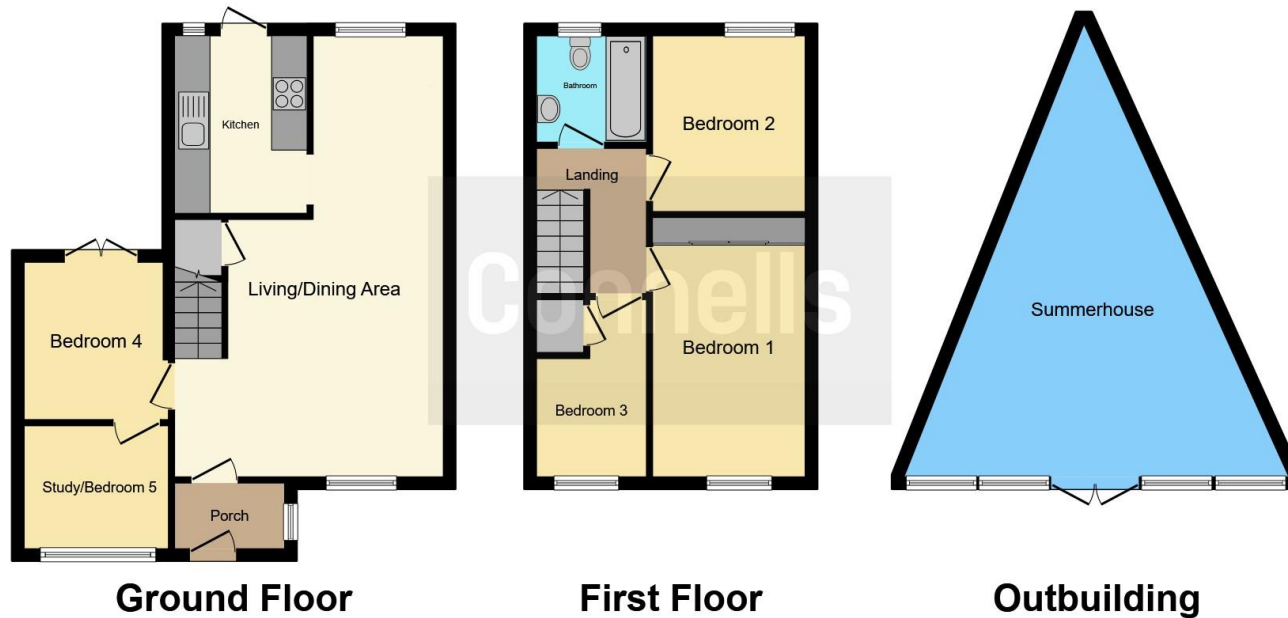
### Parking

Parking for multiple vehicles.









This floor plan is for illustrative purposes only. It is not drawn to scale. Any measurements, floor areas (including any total floor area), openings and orientation are approximate. No details are guaranteed, they cannot be relied upon for any purpose and they do not form part of any agreement. No liability is taken for any error, omission or misstatement. A party must rely upon its own inspection(s). Powered by [www.focalagent.com](http://www.focalagent.com)

To view this property please contact Connells on

**T 01908 610 805**  
**E [newportpagnell@connells.co.uk](mailto:newportpagnell@connells.co.uk)**

91 High Street Newport Pagnell  
 MILTON KEYNES MK16 8EN

**EPC Rating: C**

**view this property online [connells.co.uk/Property/NPA305796](http://connells.co.uk/Property/NPA305796)**

Tenure: Freehold



1. MONEY LAUNDERING REGULATIONS Intending purchasers will be asked to produce identification documentation at a later stage and we would ask for your co-operation in order that there will be no delay in agreeing the sale. 2. These particulars do not constitute part or all of an offer or contract. 3. The measurements indicated are supplied for guidance only and as such must be considered incorrect. Potential buyers are advised to recheck measurements before committing to any expense. 4. We have not tested any apparatus, equipment, fixtures, fittings or services and it is in the buyers interest to check the working condition of any appliances.

Connells Residential is registered in England and Wales under company number 1489613, Registered Office is Cumbria House, 16-20 Hockliffe Street, Leighton Buzzard, Bedfordshire, LU7 1GN. VAT Registration Number is 500 2481 05.

**See all our properties at [www.connells.co.uk](http://www.connells.co.uk) | [www.rightmove.co.uk](http://www.rightmove.co.uk) | [www.zoopla.co.uk](http://www.zoopla.co.uk)**

Property Ref: NPA305796 - 0011