

for sale

£355,000



## Butlers Grove Great Linford Milton Keynes MK14 5DT

Connells are pleased to bring to the market a Four bed detached chalet bungalow home. With an enclosed rear garden and off street parking are pleased to bring to the market a Four bed detached bungalow home. With an enclosed rear garden and off street parking for multiple vehicles



# Butlers Grove Great Linford Milton Keynes MK14 5DT

## Entrance Hall

Door to kitchen and bedroom three

## Lounge

17' 6" x 10' 3" ( 5.33m x 3.12m )

Patio doors leading to rear garden. Electric fire place. Chimney

## Dining Room

14' 9" x 7' 5" ( 4.50m x 2.26m )

Window to rear aspect. Radiator. Built in shelves

## Kitchen

8' 4" x 11' 8" ( 2.54m x 3.56m )

Mixture of wall and base level units. Oven. Washing machine. Door and window to rear aspect.

## Master Bedroom

14' 6" x 11' 3" ( 4.42m x 3.43m )

Ground floor. Radiator. Eves storage. Two Vlux windows

## En suite

12' x 8' 1" ( 3.66m x 2.46m )

Corner shower. WC. WHB. Full height tiling. Towel rail.

## Bedroom Four

13' 8" x 6' ( 4.17m x 1.83m )

Ground floor. Window to front. Radiator.

## Bedroom Two

12' 2" x 16' 8" ( 3.71m x 5.08m )

First floor. Vlux windows to the rear. Builts in eves storage. Radiator.

## Bedroom Three

12' x 8' 1" ( 3.66m x 2.46m )

First floor. Radiator. Window to front aspect. Walkin wardrobe.

## Bathroom

First floor. VLux window. Radiator. WC. WHB. Bath with Shower over.

## Rear Garden

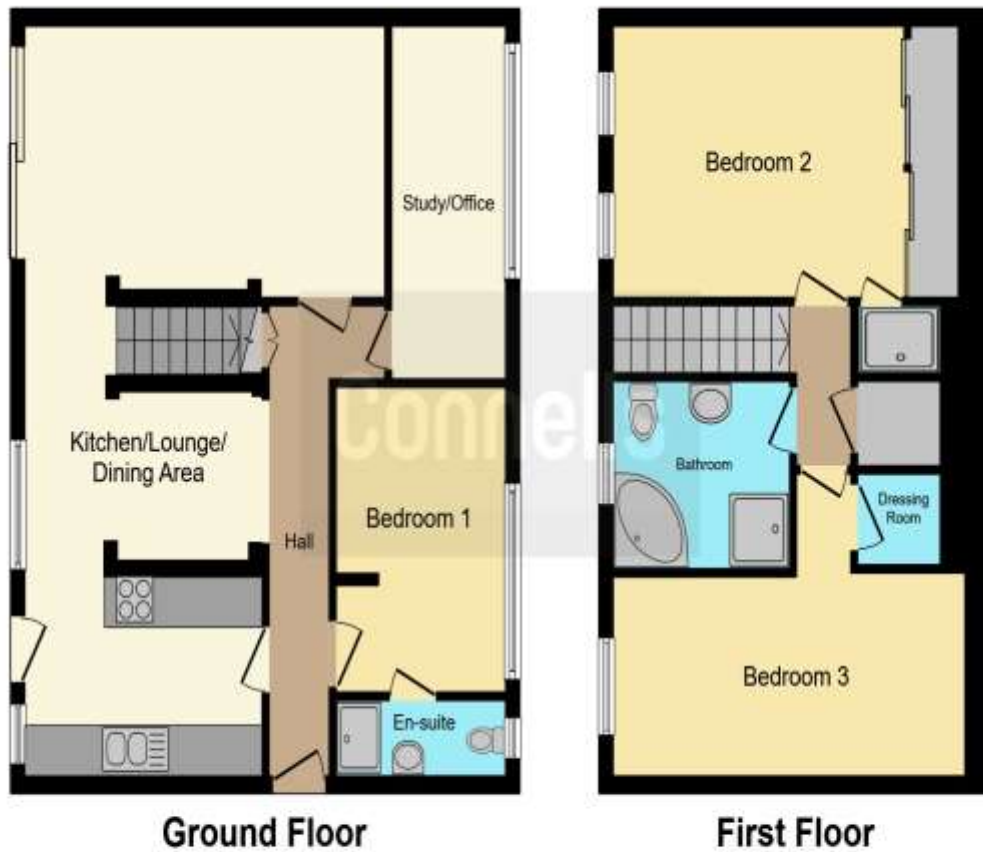
Enclosed rear garden. Patio. Raised Beds. Two sheds with electric. Side gate access.











**Ground Floor**

**First Floor**

This floor plan is for illustrative purposes only. It is not drawn to scale. Any measurements, floor areas (including any total floor area), openings and orientation are approximate. No details are guaranteed, they cannot be relied upon for any purpose and they do not form part of any agreement. No liability is taken for any error, omission or misstatement. A party must rely upon its own inspection(s). Powered by [www.focalagent.com](http://www.focalagent.com)

To view this property please contact Connells on

**T 01908 610 805**  
**E [newportpagnell@connells.co.uk](mailto:newportpagnell@connells.co.uk)**

91 High Street Newport Pagnell  
 MILTON KEYNES MK16 8EN

Property Ref: NPA305741 - 0003

**Tenure:** Freehold

**EPC Rating:** D

**view this property online [connells.co.uk/Property/NPA305741](http://connells.co.uk/Property/NPA305741)**



1. MONEY LAUNDERING REGULATIONS Intending purchasers will be asked to produce identification documentation at a later stage and we would ask for your co-operation in order that there will be no delay in agreeing the sale. 2. These particulars do not constitute part or all of an offer or contract. 3. The measurements indicated are supplied for guidance only and as such must be considered incorrect. Potential buyers are advised to recheck measurements before committing to any expense. 4. We have not tested any apparatus, equipment, fixtures, fittings or services and it is in the buyers interest to check the working condition of any appliances.

Connells Residential is registered in England and Wales under company number 1489613, Registered Office is Cumbria House, 16-20 Hockliffe Street, Leighton Buzzard, Bedfordshire, LU7 1GN. VAT Registration Number is 500 2481 05.

see all our properties at [www.connells.co.uk](http://www.connells.co.uk) | [www.rightmove.co.uk](http://www.rightmove.co.uk) | [www.zoopla.co.uk](http://www.zoopla.co.uk)