



Connells

Medina House Silbury Boulevard
Milton Keynes

Medina House Silbury Boulevard Milton Keynes MK9 2FA

for sale offers over
£260,000



Property Description

Connells Estate Agents are delighted to be able to bring to the market this modern and contemporary two bedroom upper floor apartment that is located in the heart of Central Milton Keynes, and offers excellent access to the town centre and all of its amenities and the mainline railway station that provides regular and direct links into London Euston.

The block is accessed by a secure communal entrance area with video intercom system. There is both stair and lift access to the upper floors. This immaculate apartment there is an entrance hallway with a double storage cupboard, bathroom, open plan lounge, dining and fitted kitchen area and two bedrooms.

Please also see the full range of photographs and accompanying floorplan that provides an indicative view of room layouts. For further information and to arrange your viewing call Connells Estate Agents today on 01908 674141.

The Area

Medina House is an apartment scheme that was completed in 2020. It is located on Silbury Boulevard and is within walking distance of Centre:MK and its wide range of shopping, entertainment and recreational facilities, as well as all the bars and restaurants that the city centre has to offer.

Milton Keynes Central railway station is also a short walk away, and offers excellent rail links. You can reach London Euston in approximately 35 minutes on a direct train, and there are also good rail links to the North. Milton Keynes is brilliantly connected to major road networks, with Junctions 13 & 14 connected to the city, as well as nearby trunk roads such as the A5, A421, A422 and A509. The city is well served with bus routes and also redways providing cycling options.

Large parts of Milton Keynes is covered by parks, with Campbell Park, Ouzel Valley Park and Willen Lake all a short distance from the city centre that provide fabulous outdoor spaces for recreational activities.



Entrance Hall

Double storage cupboard

Bathroom

Bath with integrated bath taps in the wall and shower over, glass shower screen on the bath, w/c, wash hand basin vanity unit fully tiled.

Bedroom 1

15' 7" x 11' 1" (4.75m x 3.38m)

Floor to ceiling window to allow natural daylight, spotlights in the ceiling.

Lounge/Kitchen/Dining

22' 9" x 11' 8" (6.93m x 3.56m)

Open plan living lounge/ kitchen. the lounge has floor to ceiling windows wood flooring throughout, tv and telephone points with spotlights in the ceiling. There is a fitted kitchen with eye base units which have underneath lighting, stainless steel sink drainer, built in electric hob and oven and integrated fridge/freezer

Bedroom 2

9' 8" x 11' 1" (2.95m x 3.38m)

Spotlights in the ceiling and wall mounted electric heater

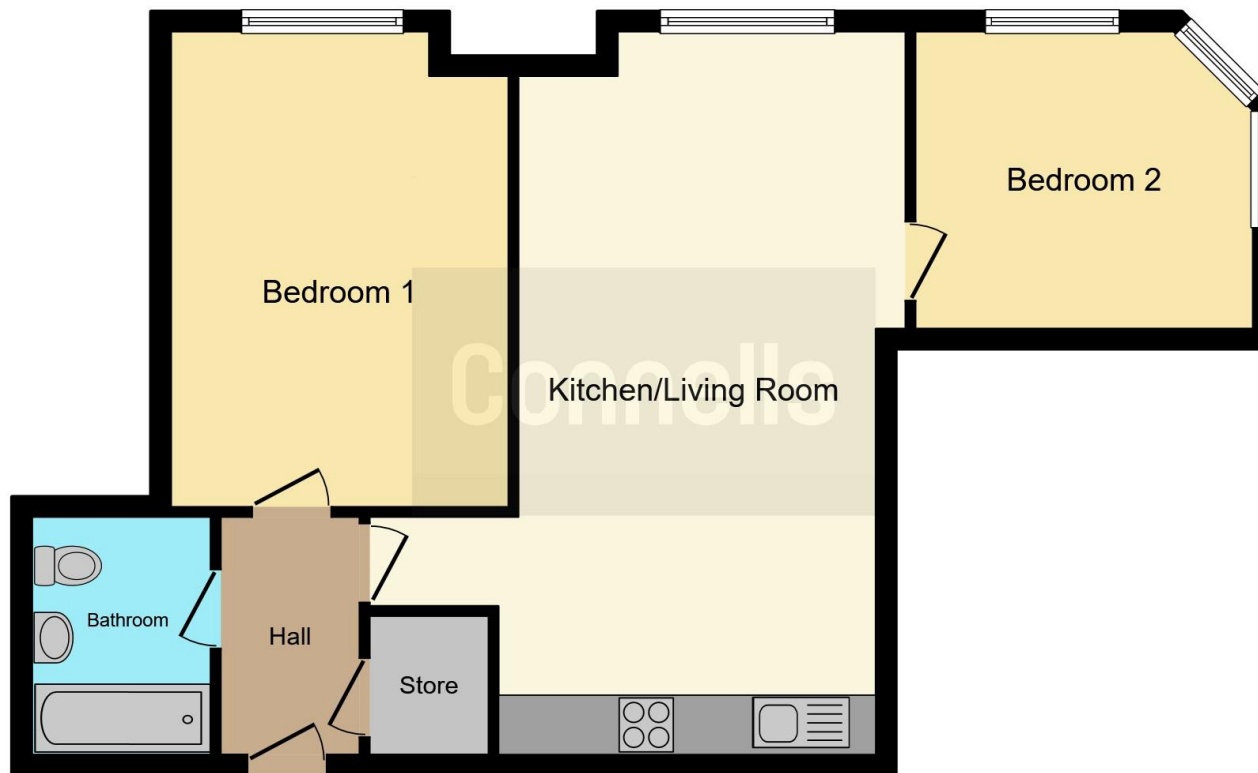
Parking

Resident parking









This floor plan is for illustrative purposes only. It is not drawn to scale. Any measurements, floor areas (including any total floor area), openings and orientation are approximate. No details are guaranteed, they cannot be relied upon for any purpose and they do not form part of any agreement. No liability is taken for any error, omission or misstatement. A party must rely upon its own inspection(s). Powered by www.focalagent.com

To view this property please contact Connells on

T 01908 674 141
E miltonkeynes@connells.co.uk

Northgate House 500 Silbury Boulevard
 MILTON KEYNES MK9 2AD

EPC Rating: D

Tenure: Leasehold

view this property online connells.co.uk/Property/MKN319361

This is a Leasehold property. We are awaiting further details about the Term of the lease. For further information please contact the branch. Please note additional fees could be incurred for items such as Leasehold packs.



1. MONEY LAUNDERING REGULATIONS Intending purchasers will be asked to produce identification documentation at a later stage and we would ask for your co-operation in order that there will be no delay in agreeing the sale. 2. These particulars do not constitute part or all of an offer or contract. 3. The measurements indicated are supplied for guidance only and as such must be considered incorrect. Potential buyers are advised to recheck measurements before committing to any expense. 4. We have not tested any apparatus, equipment, fixtures, fittings or services and it is in the buyers interest to check the working condition of any appliances.

Connells Residential is registered in England and Wales under company number 1489613, Registered Office is Cumbria House, 16-20 Hockliffe Street, Leighton Buzzard, Bedfordshire, LU7 1GN. VAT Registration Number is 500 2481 05.

See all our properties at www.connells.co.uk | www.rightmove.co.uk | www.zoopla.co.uk

Property Ref: MKN319361 - 0006