



Connells

Woodcock Walk
Flitwick Bedford

Woodcock Walk Flitwick Bedford MK45 1RD

for sale
£425,000



Property Description

Nestled in the heart of Flitwick, this delightful four bedroom family home offers a perfect blend of comfort, space and convenience. Stepping inside you'll discover a welcoming atmosphere, with a spacious living room perfect for family gatherings, a well equipped kitchen and a separate dining room. Upstairs you'll find four well proportioned bedrooms with bedroom two having an en suite. Outside to the rear you shall find a well maintained garden, a single garage in a block provides additional storage space. Located within easy reach of local amenities, schools and transport links. Don't miss the opportunity to make this wonderful house your new home.

Entrance/ Hallway

Door to front, radiator, storage cupboard.

Cloakroom

Double glazed window, low level wc, hand wash basin, radiator.

Lounge

15' 8" x 12' 6" (4.78m x 3.81m)

Double glazed window, storage cupboard, feature fireplace, patio doors to garden, radiators, French doors to dining room.

Dining Room

14' 9" x 9' 8" (4.50m x 2.95m)

Double glazed windows, radiator.

Kitchen

12' 5" x 8' 11" (3.78m x 2.72m)

Double glazed window, spotlights to ceiling, fitted wall to base units, easy clean work surfaces, sink with drainer, extractor fan, space for oven, space for fridge freezer.

Utility Room

Double glazed window, door to side, sink/ drainer, plumbing for washing machine, radiator.

First Floor

Landing

Airing cupboard, loft hatch.

Bedroom 1

11' x 15' 8" (3.35m x 4.78m)

Double glazed windows, built in wardrobes, radiators.

Bedroom 2

14' 2" x 9' 8" (4.32m x 2.95m)

Double glazed windows, fitted wardrobes, radiator.

Ensuite

Double glazed window, shower.

Bedroom 3

12' 3" x 8' 11" (3.73m x 2.72m)

Double glazed window, fitted wardrobe, storage cupboard, radiator.

Bedroom 4

6' 7" x 9' 8" (2.01m x 2.95m)

Double glazed window, radiator.

Bathroom

Double glazed window, hand wash basin with vanity storage, low level wc, bath with shower overhead, towel rail radiator.

Front Garden

Path to front door, lawn areas.

Rear Garden

Mostly laid to lawn, patio, side gate access.

Garage

Set within a block.

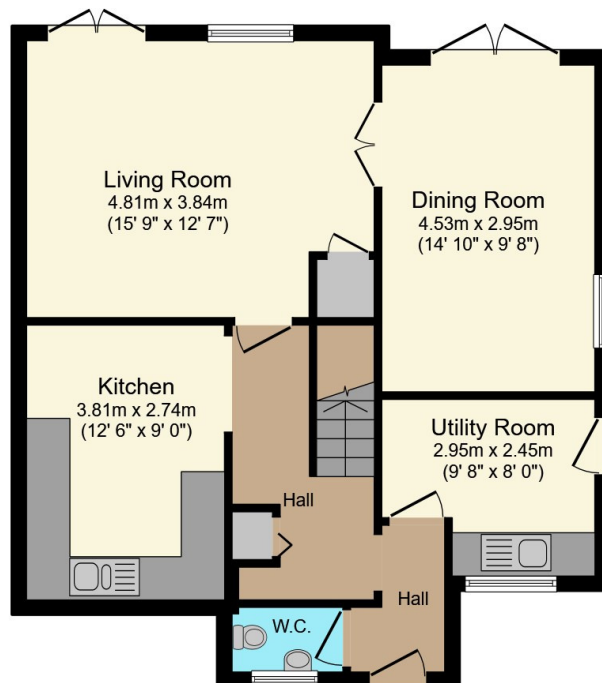
Parking

On street parking, space in front of garage, garage in block.

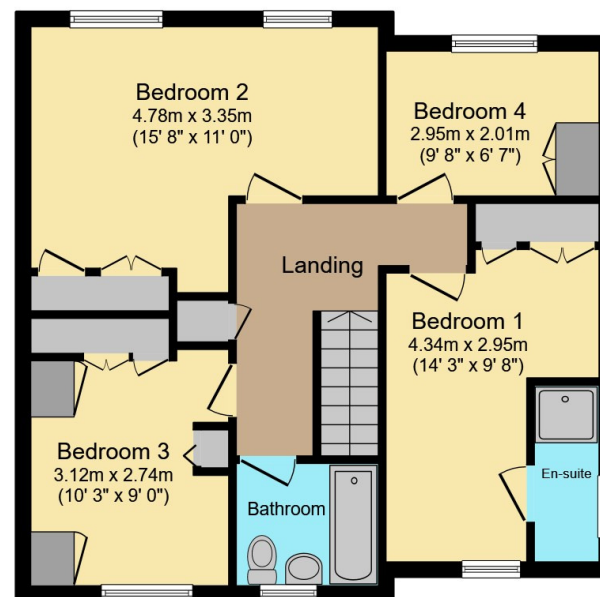








Ground Floor



First Floor

Total floor area 120.9 m² (1,302 sq.ft.) approx

This floor plan is for illustrative purposes only. It is not drawn to scale. Any measurements, floor areas (including any total floor area), openings and orientation are approximate. No details are guaranteed, they cannot be relied upon for any purpose and they do not form part of any agreement. No liability is taken for any error, omission or misstatement. A party must rely upon its own inspection(s). Powered by www.propertybox.io

Connells

To view this property please contact Connells on

T 01525 712 271
E flitwick@connells.co.uk

Unit 9 Russell Centre Coniston Road Flitwick
BEDFORD MK45 1QY

EPC Rating: C Council Tax
Band: D

Tenure: Freehold

view this property online connells.co.uk/Property/FLI305639



1. MONEY LAUNDERING REGULATIONS Intending purchasers will be asked to produce identification documentation at a later stage and we would ask for your co-operation in order that there will be no delay in agreeing the sale. 2. These particulars do not constitute part or all of an offer or contract. 3. The measurements indicated are supplied for guidance only and as such must be considered incorrect. Potential buyers are advised to recheck measurements before committing to any expense. 4. We have not tested any apparatus, equipment, fixtures, fittings or services and it is in the buyers interest to check the working condition of any appliances.

Connells Residential is registered in England and Wales under company number 1489613, Registered Office is Cumbria House, 16-20 Hockliffe Street, Leighton Buzzard, Bedfordshire, LU7 1GN. VAT Registration Number is 500 2481 05.

See all our properties at www.connells.co.uk | www.rightmove.co.uk | www.zoopla.co.uk

Property Ref: FLI305639 - 0009