



Connells

St. Peters Close  
Flitwick BEDFORD

# St. Peters Close Flitwick BEDFORD MK45 1EZ

for sale  
**£335,000**



## Property Description

Nestled in the charming town of Flitwick, this modernised three-bedroom, mid-terraced home offers a perfect blend of comfort and convenience. Step inside to discover a thoughtfully updated interior, designed for contemporary living. The property features a dedicated EV charger. Outside, a well sized garden provides a delightful space for relaxation and outdoor activities.

### Entrance/ Hallway

Storage Cupboard, radiator.

### Lounge/ Diner

23' 5" x 11' 4" ( 7.14m x 3.45m )

Double glazed window to front aspect, radiator x2, spotlights to ceiling, French doors to garden.

### Kitchen

9' 8" x 8' 5" ( 2.95m x 2.57m )

Double glazed window, steel sink/ drainer, fitted cabinets, radiator, electric hob with extractor above, integrated oven, integrated fridge, dishwasher, washing machine, hob, extractor, wine cooler.

## First Floor

### Bedroom 1

14' 5" x 11' 7" ( 4.39m x 3.53m )

Double glazed window, radiator.

### Bedroom 2

8' 10" x 8' 8" ( 2.69m x 2.64m )

Double glazed window, radiator.

### Bedroom 3

8' 8" x 8' 7" ( 2.64m x 2.62m )

Double glazed window, radiator.

## Bathroom

Wash hand basin, double glazed window, radiator, bath with overhead shower.

## Wc

Radiator, low level wc, double glazed window.

## Outside

## Front Garden

Block paved driveway with EV charger. path to front door. Planting border with plants and shrubs.

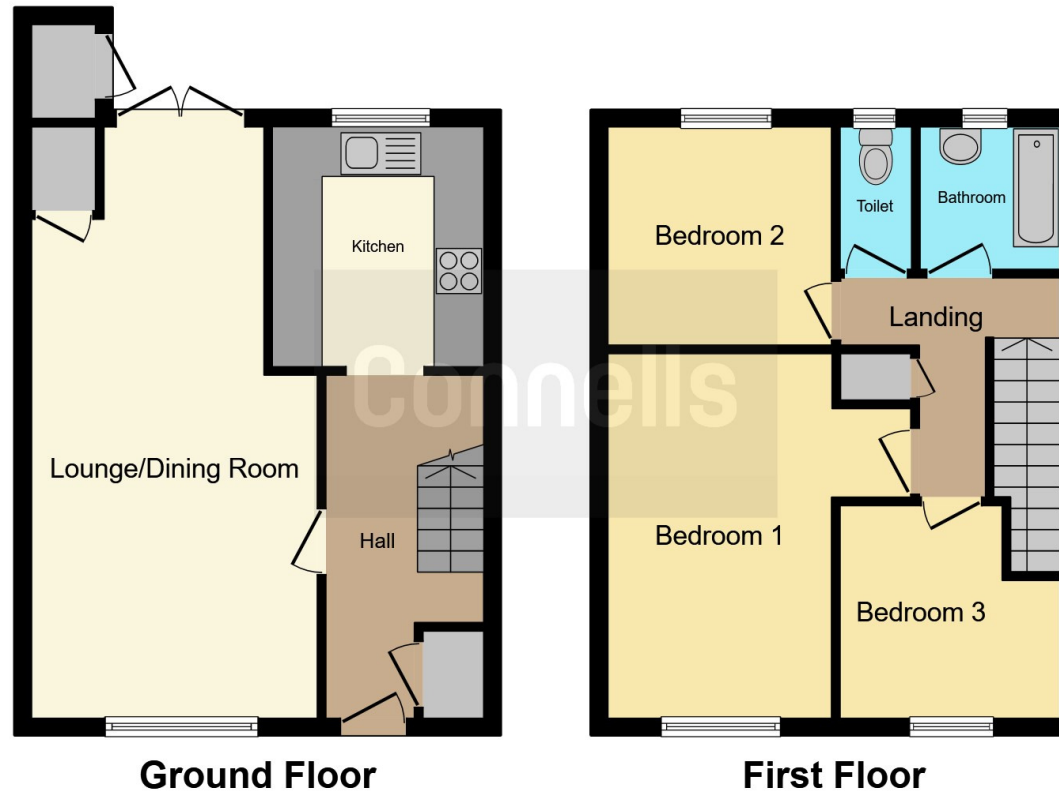
## Rear Garden

Mostly laid to lawn, patio, side access, outside brick built storage space.









This floor plan is for illustrative purposes only. It is not drawn to scale. Any measurements, floor areas (including any total floor area), openings and orientation are approximate. No details are guaranteed, they cannot be relied upon for any purpose and they do not form part of any agreement. No liability is taken for any error, omission or misstatement. A party must rely upon its own inspection(s). Powered by [www.focalagent.com](http://www.focalagent.com)

To view this property please contact Connells on

**T 01525 712 271**  
**E [flitwick@connells.co.uk](mailto:flitwick@connells.co.uk)**

Unit 9 Russell Centre Coniston Road Flitwick  
 BEDFORD MK45 1QY

EPC Rating: C    Council Tax  
 Band: B

Tenure: Freehold

**view this property online** [connells.co.uk/Property/FLI305505](http://connells.co.uk/Property/FLI305505)



1. MONEY LAUNDERING REGULATIONS Intending purchasers will be asked to produce identification documentation at a later stage and we would ask for your co-operation in order that there will be no delay in agreeing the sale. 2. These particulars do not constitute part or all of an offer or contract. 3. The measurements indicated are supplied for guidance only and as such must be considered incorrect. Potential buyers are advised to recheck measurements before committing to any expense. 4. We have not tested any apparatus, equipment, fixtures, fittings or services and it is in the buyers interest to check the working condition of any appliances.

Connells Residential is registered in England and Wales under company number 1489613, Registered Office is Cumbria House, 16-20 Hockliffe Street, Leighton Buzzard, Bedfordshire, LU7 1GN. VAT Registration Number is 500 2481 05.

**See all our properties at [www.connells.co.uk](http://www.connells.co.uk) | [www.rightmove.co.uk](http://www.rightmove.co.uk) | [www.zoopla.co.uk](http://www.zoopla.co.uk)**

Property Ref: FLI305505 - 0003