



Connells

School Lane
Stewartby Bedford



Property Description

Nestled in the charming village of Stewartby, a wonderful opportunity to own this modern three bedroom semi-detached home. The property features a well-maintained garden, ideal for outdoor relaxation and entertaining. A integrated garage provides secure parking and additional storage. Inside, the home boasts a stylish interior with a modern kitchen/diner, spacious living areas, and three well proportioned bedrooms. The layout is designed for both functionality and comfort, making it an ideal family home. Located in a desirable area, this property benefits from excellent local amenities and transport links. The combination of modern updates, a well-kept garden, and a convenient garage makes this Stewartby home a must-see.

Kitchen/ Diner

15' 9" x 9' 8" (4.80m x 2.95m)

Wall to base fitted units, stainless steel sink and drainer, easy clean work surfaces, extractor hood, space for dishwasher, radiator, double glazed window to rear, patio door to garden.

Entrance / Hallway

Door to front, radiator, double glazed window to side aspect. Door to living room, door to cloakroom.

Cloak Room

Low level wc, wash hand basin, radiator, double glazed window.

Living Room

14' 9" x 12' 6" (4.50m x 3.81m)

Double glazed window to front aspect, radiator, storage cupboard.



First Floor

Landing

Access to loft, double glazed window to side aspect, airing cupboard, doors to bedrooms and bathroom.

Bedroom 1

11' 9" x 8' 11" (3.58m x 2.72m)

Double glazed window, radiator, built in wardrobes.

Bedroom 2

11' 7" x 8' 11" (3.53m x 2.72m)

Double glazed window, radiator.

Bedroom 3

8' 6" x 6' 9" (2.59m x 2.06m)

Double glazed window, radiator, storage cupboard.

Bathroom

Low level wc, wash hand basin, double glazed window, towel rail radiator, extractor, shower overhead bath.

Front Garden

Block paved driveway, paved step to front door.

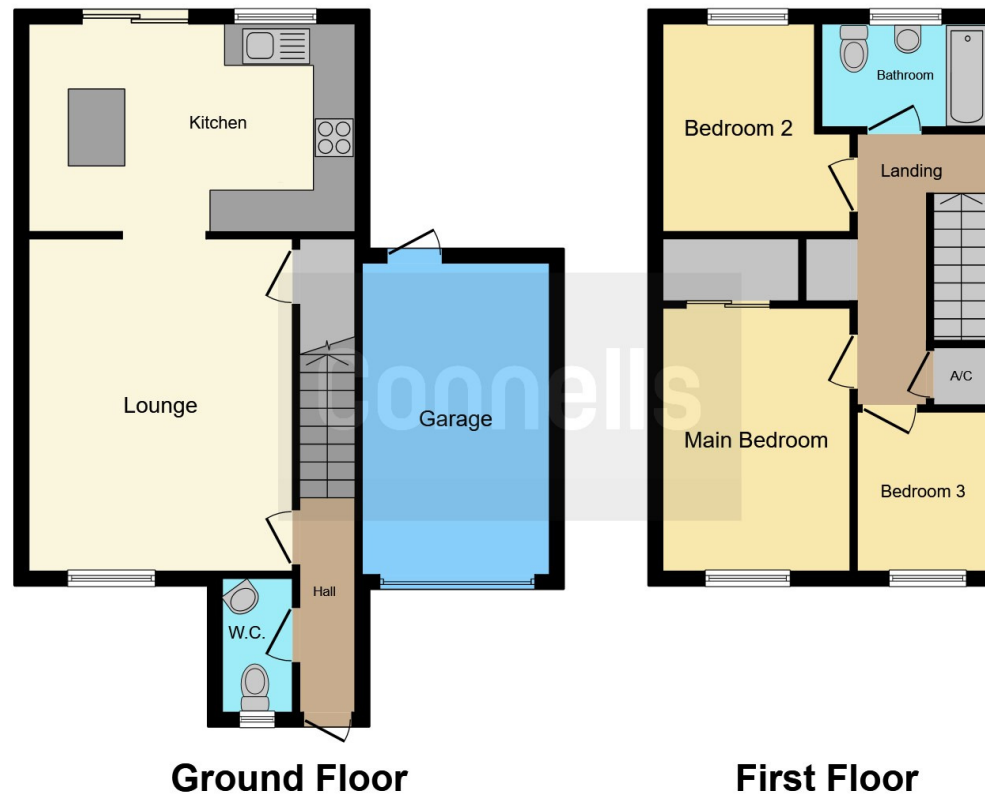
Rear Garden

Artificial lawn, summer house, side access.









This floor plan is for illustrative purposes only. It is not drawn to scale. Any measurements, floor areas (including any total floor area), openings and orientation are approximate. No details are guaranteed, they cannot be relied upon for any purpose and they do not form part of any agreement. No liability is taken for any error, omission or misstatement. A party must rely upon its own inspection(s). Powered by www.focalagent.com

To view this property please contact Connells on

T 01525 712 271
E flitwick@connells.co.uk

Unit 9 Russell Centre Coniston Road Flitwick
 BEDFORD MK45 1QY

EPC Rating: Awaited
 Council Tax Band: C

Tenure: Freehold

view this property online connells.co.uk/Property/FLI305490



1. MONEY LAUNDERING REGULATIONS Intending purchasers will be asked to produce identification documentation at a later stage and we would ask for your co-operation in order that there will be no delay in agreeing the sale. 2. These particulars do not constitute part or all of an offer or contract. 3. The measurements indicated are supplied for guidance only and as such must be considered incorrect. Potential buyers are advised to recheck measurements before committing to any expense. 4. We have not tested any apparatus, equipment, fixtures, fittings or services and it is in the buyers interest to check the working condition of any appliances.

Connells Residential is registered in England and Wales under company number 1489613, Registered Office is Cumbria House, 16-20 Hockliffe Street, Leighton Buzzard, Bedfordshire, LU7 1GN. VAT Registration Number is 500 2481 05.

See all our properties at www.connells.co.uk | www.rightmove.co.uk | www.zoopla.co.uk

Property Ref: FLI305490 - 0006