

for sale

£290,000



The Paddocks Flitwick BEDFORD MK45 1XE

Located close to the local amenities of Flitwick including the Thameslink train line, this 3 bedroom semi-detached house, is well presented throughout with parking and an enclosed rear garden.



The Paddocks Flitwick BEDFORD MK45 1XE

Entrance / Hallway

Door to front, leading to porch area, second door to living room diner, electric heater, stairs rising to first floor.

Living Room

24' 1" x 11' 1" (7.34m x 3.38m)

Double glazed window to front and to rear aspect, door to rear garden, built in storage cupboard under the stairs, two electric heaters.

Kitchen

10' 7" x 6' 4" (3.23m x 1.93m)

Wall to base fitted units, easy clean work surfaces, stainless steel sink with drainer, tiling, plumbing for washing machine, space for oven, space for fridge freezer. Double glazed window to rear aspect.

First Floor

Landing

Airing cupboard, access to loft which is partially boarded, doors to bedrooms and bathroom.

Bedroom 1

12' 6" x 8' 3" (3.81m x 2.51m)

Double glazed window to front aspect, electric heater.

Bedroom 2

10' 9" x 8' 3" (3.28m x 2.51m)

Double glazed window to rear aspect, electric heater.

Bedroom 3

9' 2" x 6' 2" (2.79m x 1.88m)

Double glazed window to front aspect, electric heater, built in storage cupboard.

Bathroom

Panelled bath, low level wc, hand wash basin, double glazed window to rear aspect, tiling.



Outside

Front Garden

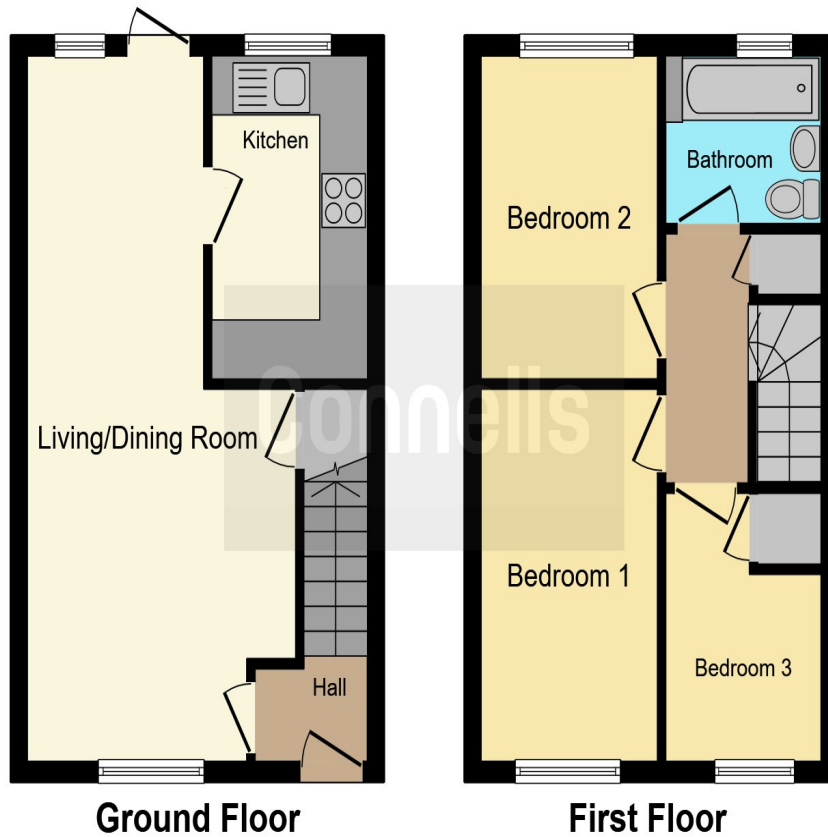
Driveway for two vehicles, lawn area with path to front door.

Rear Garden

Mostly laid to lawn, side gate access.







Ground Floor

First Floor

This floor plan is for illustrative purposes only. It is not drawn to scale. Any measurements, floor areas (including any total floor area), openings and orientation are approximate. No details are guaranteed, they cannot be relied upon for any purpose and they do not form part of any agreement. No liability is taken for any error, omission or misstatement. A party must rely upon its own inspection(s). Powered by www.focalagent.com

To view this property please contact Connells on

T 01525 712 271
E flitwick@connells.co.uk

Unit 9 Russell Centre Coniston Road Flitwick
 BEDFORD MK45 1QY

Property Ref: FLI305185 - 0009

Tenure: Freehold

EPC Rating: D

view this property online connells.co.uk/Property/FLI305185



1. MONEY LAUNDERING REGULATIONS Intending purchasers will be asked to produce identification documentation at a later stage and we would ask for your co-operation in order that there will be no delay in agreeing the sale. 2. These particulars do not constitute part or all of an offer or contract. 3. The measurements indicated are supplied for guidance only and as such must be considered incorrect. Potential buyers are advised to recheck measurements before committing to any expense. 4. We have not tested any apparatus, equipment, fixtures, fittings or services and it is in the buyers interest to check the working condition of any appliances.

Connells Residential is registered in England and Wales under company number 1489613, Registered Office is Cumbria House, 16-20 Hockliffe Street, Leighton Buzzard, Bedfordshire, LU7 1GN. VAT Registration Number is 500 2481 05.

see all our properties at www.connells.co.uk | www.rightmove.co.uk | www.zoopla.co.uk