



Connells

Merchant Place Riverside Square
Bedford

Merchant Place Riverside Square Bedford MK40 1AR

for sale shared ownership
£64,000



Property Description

CENTRAL BEDFORD LOCATION

Experience the epitome of shared ownership with this remarkable apartment. Nestled in a fantastic location, this upper floor gem offers a spacious and inviting atmosphere. Step into the luxurious abode and be greeted by a stunning double bedroom complete with built-in wardrobes, ensuring ample storage space.

The open plan kitchen, lounge, and diner create a seamless flow, perfect for entertaining guests or simply relaxing in style. Prepare to be captivated by the breathtaking views that await you, providing a picturesque backdrop to your everyday life.

Don't miss out on this incredible opportunity - viewing is highly advised.

Entrance Hall

Lounge/Kitchen/Diner

19' 11" Max x 15' 10" Max (6.07m Max x 4.83m Max)

Bedroom

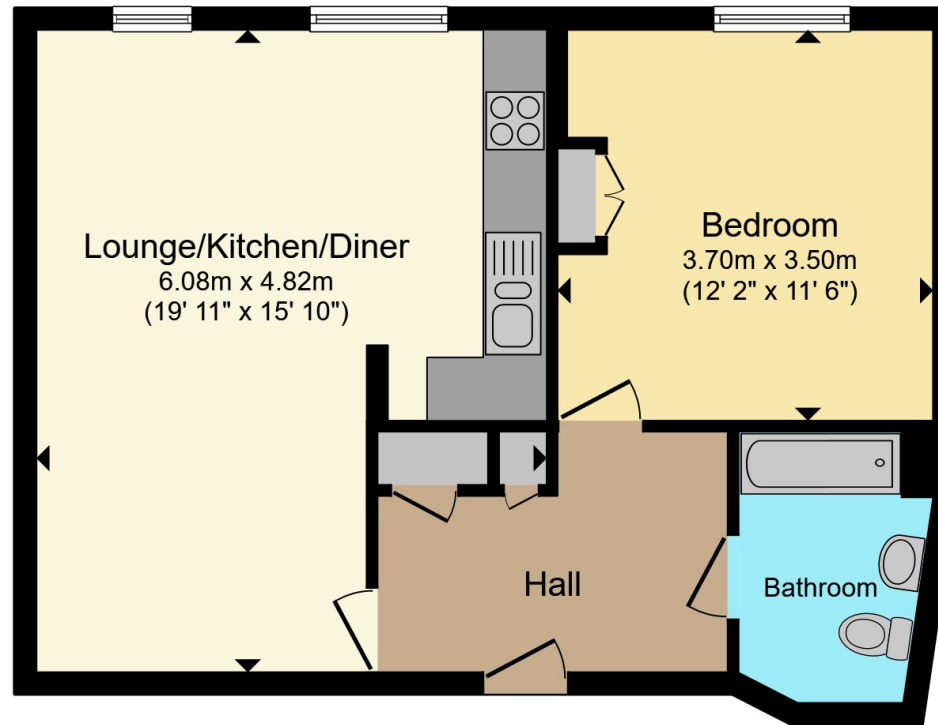
12' 2" x 11' 6" (3.71m x 3.51m)

Bathroom









Total floor area 51.5 m² (555 sq.ft.) approx

This floor plan is for illustrative purposes only. It is not drawn to scale. Any measurements, floor areas (including any total floor area), openings and orientation are approximate. No details are guaranteed, they cannot be relied upon for any purpose and they do not form part of any agreement. No liability is taken for any error, omission or misstatement. A party must rely upon its own inspection(s). Powered by www.propertybox.io

Connells

To view this property please contact Connells on

T 01234 345 303
E bedford@connells.co.uk

42 Allhallows
 BEDFORD MK40 1LN

EPC Rating: B

Council Tax
 Band: A

Service Charge:
 1560.00

Ground Rent:
 Ask Agent

Tenure: Leasehold

view this property online connells.co.uk/Property/BED312745

This is a Leasehold property with details as follows; Term of Lease 125 years from 16 Feb 2018. Should you require further information please contact the branch. Please Note additional fees could be incurred for items such as

1. MONEY LAUNDERING REGULATIONS Intending purchasers will be asked to produce identification documentation at a later stage and we would ask for your co-operation in order that there will be no delay in agreeing the sale. 2. These particulars do not constitute part or all of an offer or contract. 3. The measurements indicated are supplied for guidance only and as such must be considered incorrect. Potential buyers are advised to recheck measurements before committing to any expense. 4. We have not tested any apparatus, equipment, fixtures, fittings or services and it is in the buyers interest to check the working condition of any appliances.

Connells Residential is registered in England and Wales under company number 1489613, Registered Office is Cumbria House, 16-20 Hockliffe Street, Leighton Buzzard, Bedfordshire, LU7 1GN. VAT Registration Number is 500 2481 05.



See all our properties at www.connells.co.uk | www.rightmove.co.uk | www.zoopla.co.uk

Property Ref: BED312745 - 0003