



Connells

Hastings Road
Kempston Bedford



Property Description

A well-presented two-bedroom ground floor flat located in the heart of Kempston, offering spacious accommodation and access to a communal garden.

The property features a bright lounge/diner, separate fitted kitchen, two generous bedrooms, a modern bathroom, and an additional separate WC-ideal for everyday convenience.

Set within a quiet development close to local shops, transport links, and amenities, this flat is perfect for first-time buyers, investors, or anyone seeking low-maintenance living on one level.

Early viewing is highly recommended!



Entrance Hall

Lounge/Diner

23' 6" x 10' 7" (7.16m x 3.23m)

Kitchen

12' 7" x 7' 8" (3.84m x 2.34m)

Bedroom One

11' 6" x 10' 8" (3.51m x 3.25m)

Bedroom Two

10' 6" x 9' 4" (3.20m x 2.84m)

Bathroom

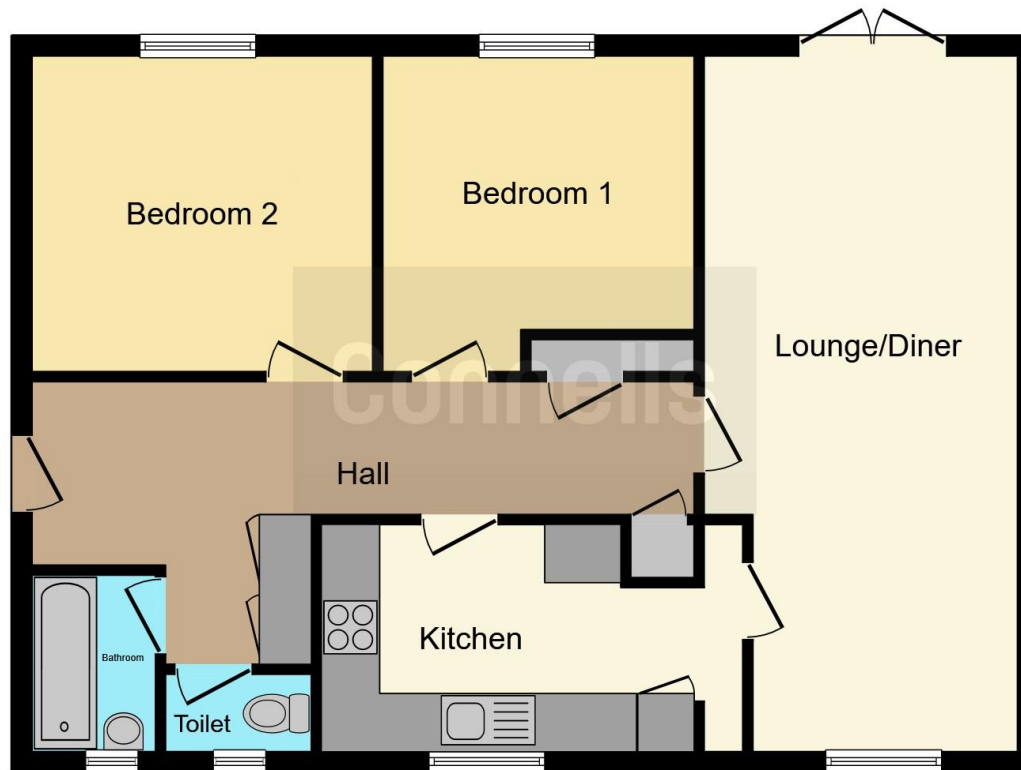
External

Communal Garden









This floor plan is for illustrative purposes only. It is not drawn to scale. Any measurements, floor areas (including any total floor area), openings and orientation are approximate. No details are guaranteed, they cannot be relied upon for any purpose and they do not form part of any agreement. No liability is taken for any error, omission or misstatement. A party must rely upon its own inspection(s). Powered by www.focalagent.com

To view this property please contact Connells on

T 01234 345 303
E bedford@connells.co.uk

42 Allhallows
 BEDFORD MK40 1LN

EPC Rating: C

Council Tax
 Band: A

Service Charge: 750.00 Ground Rent:
 10.00

Tenure: Leasehold

view this property online connells.co.uk/Property/BED309902

This is a Leasehold property with details as follows; Term of Lease 125 years from 09 May 1988. Should you require further information please contact the branch. Please Note additional fees could be incurred for items such as

1. MONEY LAUNDERING REGULATIONS Intending purchasers will be asked to produce identification documentation at a later stage and we would ask for your co-operation in order that there will be no delay in agreeing the sale. 2. These particulars do not constitute part or all of an offer or contract. 3. The measurements indicated are supplied for guidance only and as such must be considered incorrect. Potential buyers are advised to recheck measurements before committing to any expense. 4. We have not tested any apparatus, equipment, fixtures, fittings or services and it is in the buyers interest to check the working condition of any appliances.

Connells Residential is registered in England and Wales under company number 1489613, Registered Office is Cumbria House, 16-20 Hockliffe Street, Leighton Buzzard, Bedfordshire, LU7 1GN. VAT Registration Number is 500 2481 05.



See all our properties at www.connells.co.uk | www.rightmove.co.uk | www.zoopla.co.uk

Property Ref: BED309902 - 0002