



**Connells**

Ryton Close  
Bedford





## Property Description

\*\*\*OFFERED CHAIN FREE!!\*\*\*

Nestled at the tranquil end of a serene cul-de-sac in Brickhill, this charming detached bungalow welcomes you with a cozy entrance porch and hallway.

Upon entering, you will discover a spacious lounge and dining area, designed for both relaxation and entertaining guests. The kitchen is equipped with appliances, ensuring that meal preparation is effortless and enjoyable.

A delightful conservatory enhances the living space, flooding the area with natural light and providing lovely views of the garden.

The bungalow includes three inviting bedrooms, perfect for accommodating family members or visitors, along with a stylish shower room and a separate W/C for added convenience.

Outside, the beautifully enclosed rear garden serves as a private sanctuary, creating a charming appeal, further enhanced by a double garage and a driveway that offers ample parking space.

Overall, this charming home in the North Bedford area offers a perfect blend of comfort, style, and practicality for a family looking to settle in a desirable location.

**Entrance Porch**

**Entrance Hall**

**Cloakroom**

**Lounge/Diner**

22' 10" x 12' 2" ( 6.96m x 3.71m )

**Kitchen**

10' x 8' 10" ( 3.05m x 2.69m )

**Conservatory**

19' 8" x 7' 2" ( 5.99m x 2.18m )

**Bedroom One**

12' 2" x 10' 3" ( 3.71m x 3.12m )

**Bedroom Two**

12' 2" x 8' 9" ( 3.71m x 2.67m )

**Bedroom Three/Study**

8' x 7' 4" ( 2.44m x 2.24m )

**Bathroom**

**External**

**Front Garden**

**Double Garage**



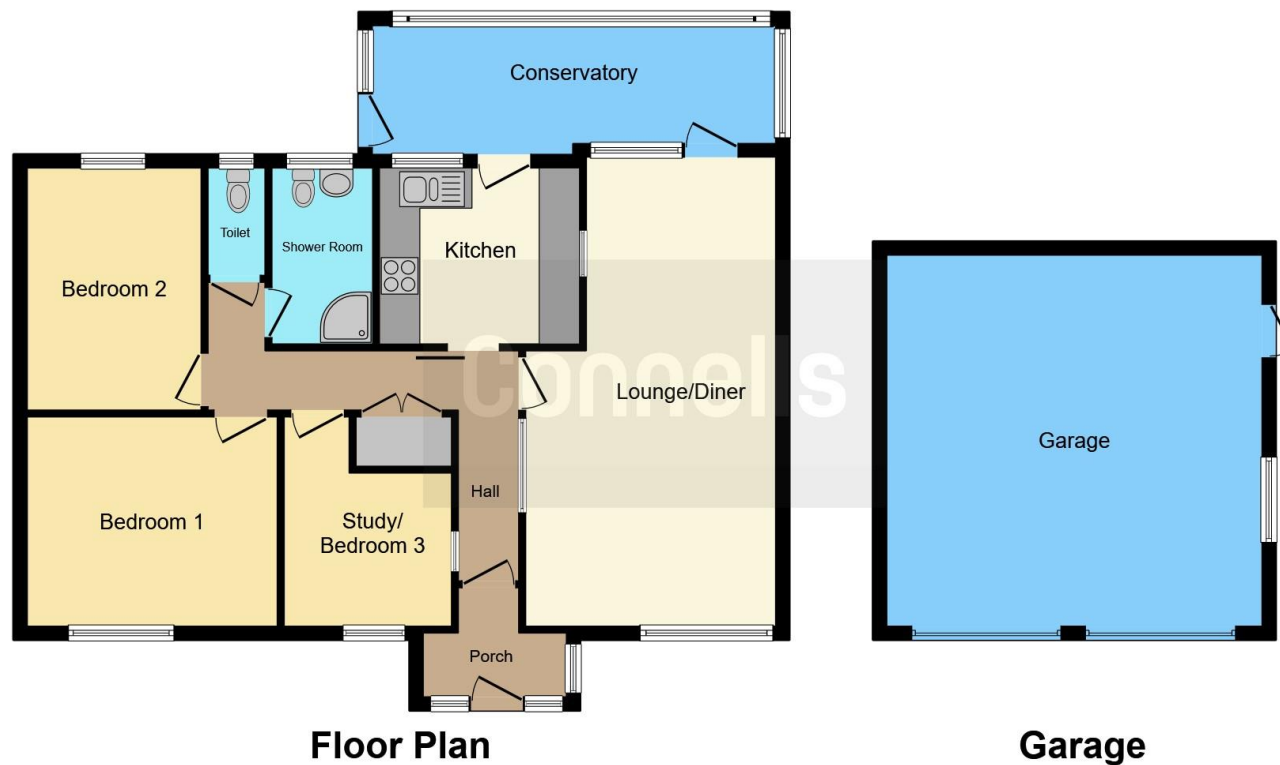












This floor plan is for illustrative purposes only. It is not drawn to scale. Any measurements, floor areas (including any total floor area), openings and orientation are approximate. No details are guaranteed, they cannot be relied upon for any purpose and they do not form part of any agreement. No liability is taken for any error, omission or misstatement. A party must rely upon its own inspection(s). Powered by [www.focalagent.com](http://www.focalagent.com)

To view this property please contact Connells on

**T 01234 345 303**  
**E [bedford@connells.co.uk](mailto:bedford@connells.co.uk)**

42 Allhallows  
 BEDFORD MK40 1LN

EPC Rating: C    Council Tax  
 Band: D

Tenure: Freehold

**view this property online** [connells.co.uk/Property/BED312462](http://connells.co.uk/Property/BED312462)



1. MONEY LAUNDERING REGULATIONS Intending purchasers will be asked to produce identification documentation at a later stage and we would ask for your co-operation in order that there will be no delay in agreeing the sale. 2. These particulars do not constitute part or all of an offer or contract. 3. The measurements indicated are supplied for guidance only and as such must be considered incorrect. Potential buyers are advised to recheck measurements before committing to any expense. 4. We have not tested any apparatus, equipment, fixtures, fittings or services and it is in the buyers interest to check the working condition of any appliances.

Connells Residential is registered in England and Wales under company number 1489613, Registered Office is Cumbria House, 16-20 Hockliffe Street, Leighton Buzzard, Bedfordshire, LU7 1GN. VAT Registration Number is 500 2481 05.

**See all our properties at [www.connells.co.uk](http://www.connells.co.uk) | [www.rightmove.co.uk](http://www.rightmove.co.uk) | [www.zoopla.co.uk](http://www.zoopla.co.uk)**

Property Ref: BED312462 - 0003