





Property Description

Connells are excited to introduce to the market this 3 bedroom end-terrace property in need of modernisation! Briefly comprising of entrance porch, entrance hall, lounge/diner, kitchen, conservatory, 3 bedrooms, shower room, garden, garage and workshop.

A viewing of this property is highly advised!!



Entrance Porch

Entrance Hall

Lounge

24' x 10' (7.32m x 3.05m)

Kitchen

8' 8" x 5' 3" (2.64m x 1.60m)

Conservatory

7' 1" x 5' 7" (2.16m x 1.70m)

First Floor

Bedroom One

13' x 8' 3" (3.96m x 2.51m)

Bedroom Two

9' 11" x 8' 8" (3.02m x 2.64m)

Bedroom Three

9' 7" x 7' 2" (2.92m x 2.18m)

Shower Room

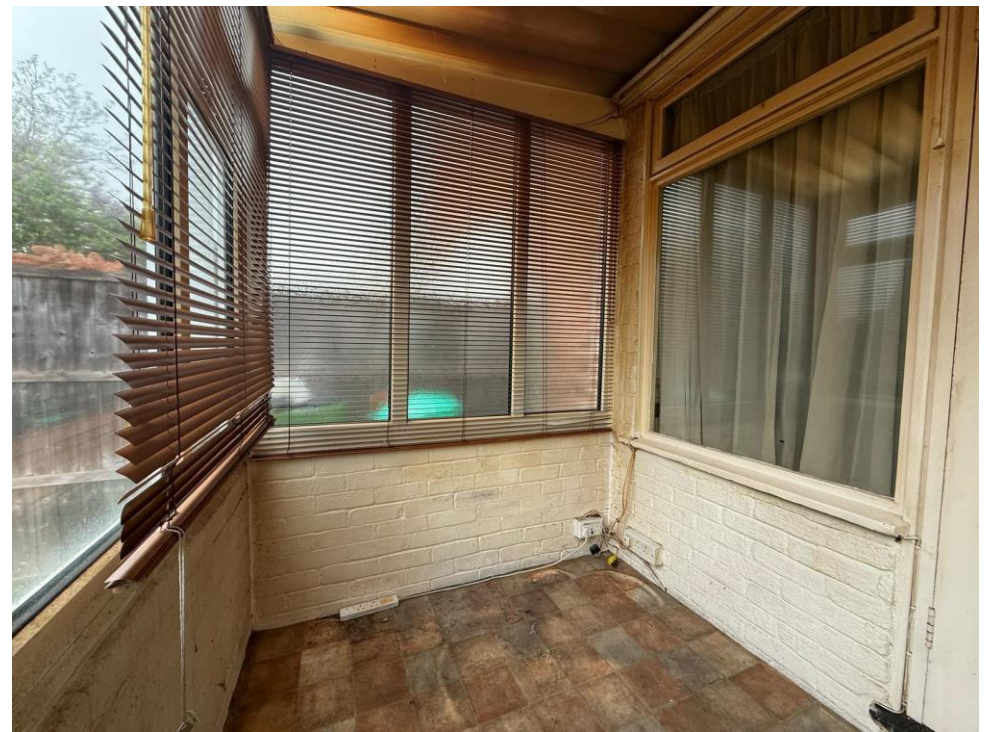
External

Garage

Workshop

Rear Garden



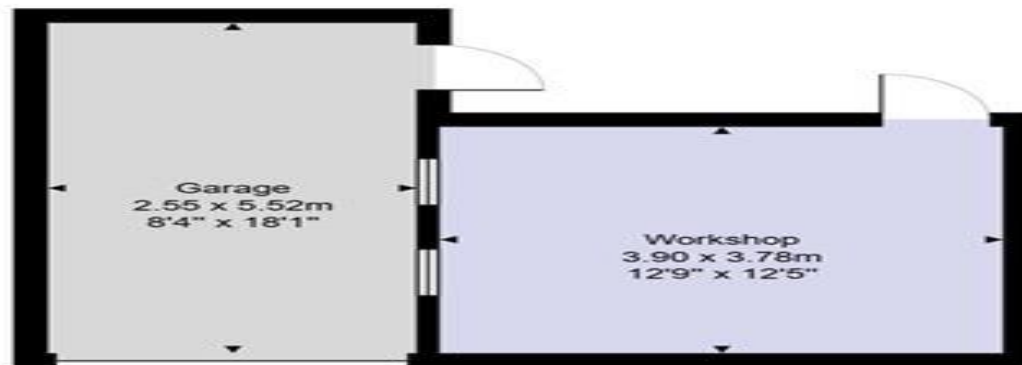




Ground Floor



First Floor



Ground Floor

Gross Internal Area: 101.9 m² ... 1097 ft²

All measurements are approximate and for display purposes only.

To view this property please contact Connells on

T 01234 345 303
E bedford@connells.co.uk

42 Allhallows
BEDFORD MK40 1LN

EPC Rating: D

Tenure: Freehold

view this property online connells.co.uk/Property/BED312448



1. MONEY LAUNDERING REGULATIONS Intending purchasers will be asked to produce identification documentation at a later stage and we would ask for your co-operation in order that there will be no delay in agreeing the sale. 2. These particulars do not constitute part or all of an offer or contract. 3. The measurements indicated are supplied for guidance only and as such must be considered incorrect. Potential buyers are advised to recheck measurements before committing to any expense. 4. We have not tested any apparatus, equipment, fixtures, fittings or services and it is in the buyers interest to check the working condition of any appliances.

Connells Residential is registered in England and Wales under company number 1489613, Registered Office is Cumbria House, 16-20 Hockliffe Street, Leighton Buzzard, Bedfordshire, LU7 1GN. VAT Registration Number is 500 2481 05.

See all our properties at www.connells.co.uk | www.rightmove.co.uk | www.zoopla.co.uk

Property Ref: BED312448 - 0003