



Connells

Palstra
Shortstown Bedford



Property Description

Nestled in the highly desirable New Cardington Area, this impressive extended detached residence offers an abundance of space and comfort, making it an ideal family home. As you step inside, you are greeted by a warm and inviting lounge that serves as the perfect retreat for relaxation or entertaining guests. The heart of the home is undoubtedly the versatile kitchen/dining/family space, which is designed to accommodate both casual family meals and more formal dining occasions. This open-plan area is flooded with natural light, creating a bright and airy atmosphere that enhances the overall appeal of the home.

The property boasts three generously sized double bedrooms, each providing ample space for furnishings/personal touches. The master bedroom is a true sanctuary, featuring a dedicated dressing area that adds a touch of luxury, along with a well-appointed en-suite bathroom for added convenience and privacy. The family bathroom is equally impressive, offering a soothing ambiance for relaxation.

Outside, the property continues to impress with an enclosed rear garden, providing a safe and private space for children to play or for hosting summer barbecues with friends and family. Additionally, the residence includes a garage, offering secure storage for vehicles or outdoor equipment, as well as parking facilities to accommodate multiple vehicles.

The New Cardington Area is known for its community spirit and proximity to local amenities, schools, and parks.



Entrance Hall

Lounge

17' 6" x 10' 11" (5.33m x 3.33m)

Dining Room

10' 4" x 9' 4" (3.15m x 2.84m)

Kitchen

16' 3" x 12' 2" (4.95m x 3.71m)

First Floor

Landing

Bedroom One

11' 2" x 11' 2" (3.40m x 3.40m)

Ensuite

Bedroom Two

10' 4" x 9' 5" (3.15m x 2.87m)

Bedroom Three

9' 3" x 8' 6" (2.82m x 2.59m)

Bathroom

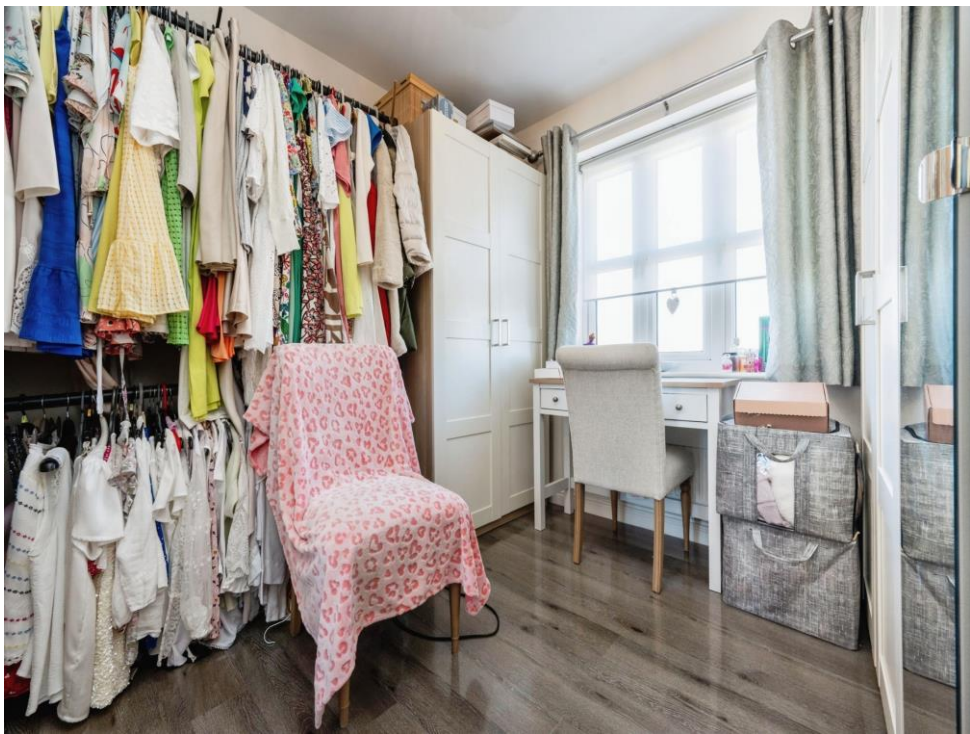
External

Front Garden

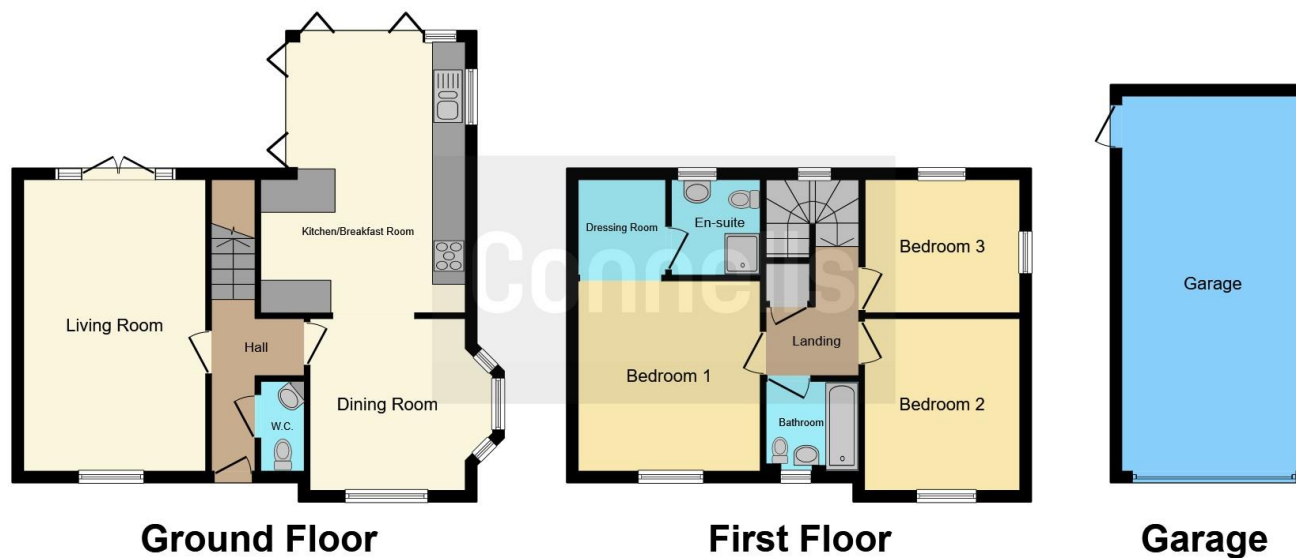
Rear Garden

Parking









This floor plan is for illustrative purposes only. It is not drawn to scale. Any measurements, floor areas (including any total floor area), openings and orientation are approximate. No details are guaranteed, they cannot be relied upon for any purpose and they do not form part of any agreement. No liability is taken for any error, omission or misstatement. A party must rely upon its own inspection(s). Powered by www.focalagent.com

To view this property please contact Connells on

T 01234 345 303
E bedford@connells.co.uk

42 Allhallows
 BEDFORD MK40 1LN

EPC Rating: B

Tenure: Freehold

view this property online connells.co.uk/Property/BED312337



1. MONEY LAUNDERING REGULATIONS Intending purchasers will be asked to produce identification documentation at a later stage and we would ask for your co-operation in order that there will be no delay in agreeing the sale. 2. These particulars do not constitute part or all of an offer or contract. 3. The measurements indicated are supplied for guidance only and as such must be considered incorrect. Potential buyers are advised to recheck measurements before committing to any expense. 4. We have not tested any apparatus, equipment, fixtures, fittings or services and it is in the buyers interest to check the working condition of any appliances.

Connells Residential is registered in England and Wales under company number 1489613, Registered Office is Cumbria House, 16-20 Hockliffe Street, Leighton Buzzard, Bedfordshire, LU7 1GN. VAT Registration Number is 500 2481 05.

See all our properties at www.connells.co.uk | www.rightmove.co.uk | www.zoopla.co.uk

Property Ref: BED312337 - 0002