







## Property Description

Spacious    Four-Bedroom    Semi-Detached  
Townhouse in Sandy

Situated in a sought-after part of Sandy, this well-presented four-bedroom semi-detached townhouse offers generous living space, modern comforts, and a convenient location. Built in the 1990's/early 2000's, this home requires no work and is ready to move into.

The property features a spacious living room, perfect for relaxing or entertaining, along with a modern kitchen/diner, offering a great space for family meals and gatherings. The master bedroom benefits from its own en-suite, while the remaining bedrooms are served by a well-appointed family bathroom.

Externally, the home boasts off-road parking and a private garden, providing both convenience and outdoor space to enjoy.

This is a fantastic opportunity to secure a well-maintained home in a desirable location-viewing is highly recommended!

For more details or to arrange a viewing, contact us today.

**Entrance Hall**

**Cloakroom**

**Lounge**

16' 2" x 11' 6" ( 4.93m x 3.51m )

**Kitchen**

15' x 9' 4" ( 4.57m x 2.84m )

**First Floor**

**Bedroom Two**

11' 2" x 9' 4" ( 3.40m x 2.84m )

**Bedroom Three**

10' 6" x 9' 3" ( 3.20m x 2.82m )

**Bedroom Four**

7' 8" x 6' 7" ( 2.34m x 2.01m )

**Bathroom**

**Second Floor**

**Bedroom One**

15' 6" x 12' 9" ( 4.72m x 3.89m )

**Ensuite**

**External**

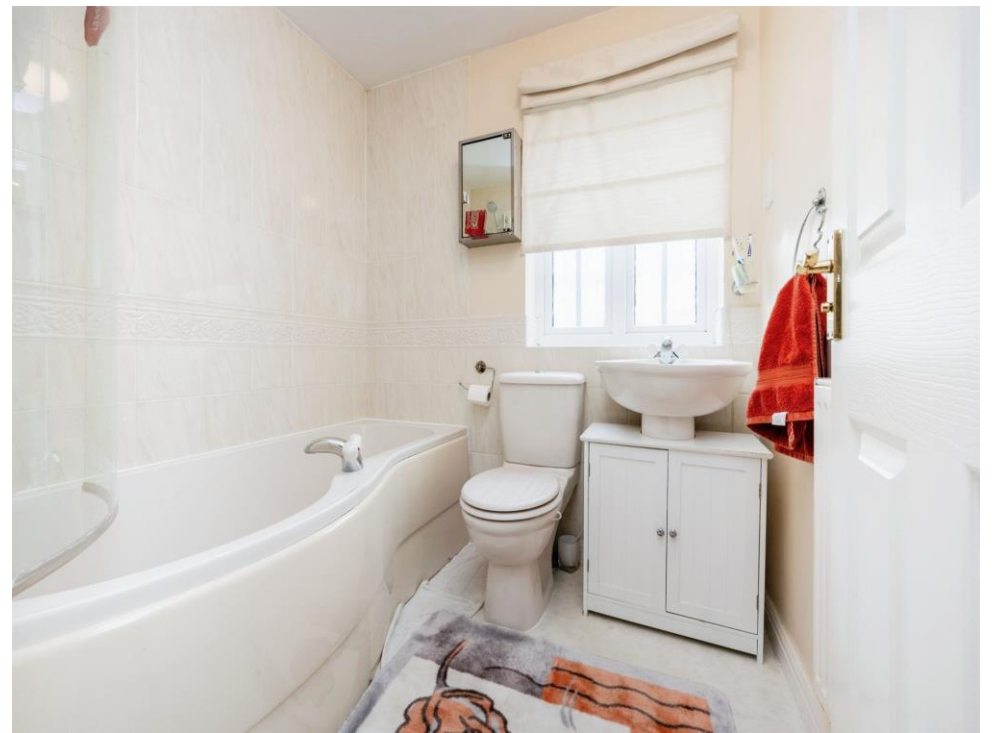
**Rear Garden**

**Garage**

**Off Road Parking**



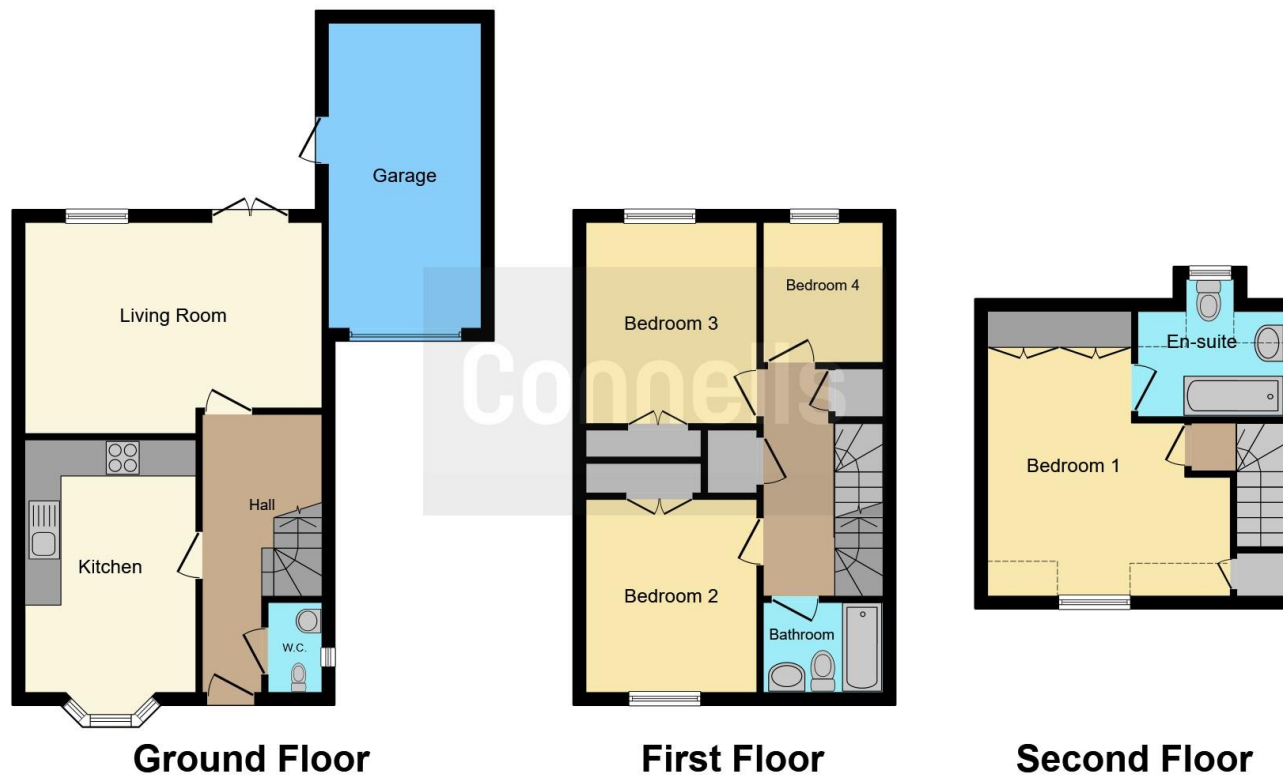












This floor plan is for illustrative purposes only. It is not drawn to scale. Any measurements, floor areas (including any total floor area), openings and orientation are approximate. No details are guaranteed, they cannot be relied upon for any purpose and they do not form part of any agreement. No liability is taken for any error, omission or misstatement. A party must rely upon its own inspection(s). Powered by [www.focalagent.com](http://www.focalagent.com)

To view this property please contact Connells on

**T 01234 345 303**  
**E [bedford@connells.co.uk](mailto:bedford@connells.co.uk)**

42 Allhallows  
 BEDFORD MK40 1LN

**EPC Rating: C**

Tenure: Freehold

**view this property online** [connells.co.uk/Property/BED312266](http://connells.co.uk/Property/BED312266)



1. MONEY LAUNDERING REGULATIONS Intending purchasers will be asked to produce identification documentation at a later stage and we would ask for your co-operation in order that there will be no delay in agreeing the sale. 2. These particulars do not constitute part or all of an offer or contract. 3. The measurements indicated are supplied for guidance only and as such must be considered incorrect. Potential buyers are advised to recheck measurements before committing to any expense. 4. We have not tested any apparatus, equipment, fixtures, fittings or services and it is in the buyers interest to check the working condition of any appliances.

Connells Residential is registered in England and Wales under company number 1489613, Registered Office is Cumbria House, 16-20 Hockliffe Street, Leighton Buzzard, Bedfordshire, LU7 1GN. VAT Registration Number is 500 2481 05.

**See all our properties at [www.connells.co.uk](http://www.connells.co.uk) | [www.rightmove.co.uk](http://www.rightmove.co.uk) | [www.zoopla.co.uk](http://www.zoopla.co.uk)**

Property Ref: BED312266 - 0006