



Connells

Wadsworth Court
Bedford



Property Description

This property boasts an attractive setting, featuring a freehold detached coach house that offers both privacy and charm. The open-plan kitchen, lounge, and dining area create a spacious and inviting atmosphere, perfect for entertaining or relaxing. With two well-appointed bedrooms, including a master suite with an ensuite bathroom, this home is designed for comfort and convenience. Additional highlights include a separate bathroom, a garage for secure storage, and two dedicated parking spaces, ensuring ample room for vehicles. A viewing is strongly recommended to fully appreciate the unique features and potential of this exceptional property. Don't miss the opportunity to make this your dream home.



Entrance Hall

Kitchen-Lounge-Diner

18' 2" x 16' 6" (5.54m x 5.03m)

Bedroom One

12' 4" x 10' (3.76m x 3.05m)

Ensuite

Bedroom Two

8' 11" x 8' 5" (2.72m x 2.57m)

Bathroom

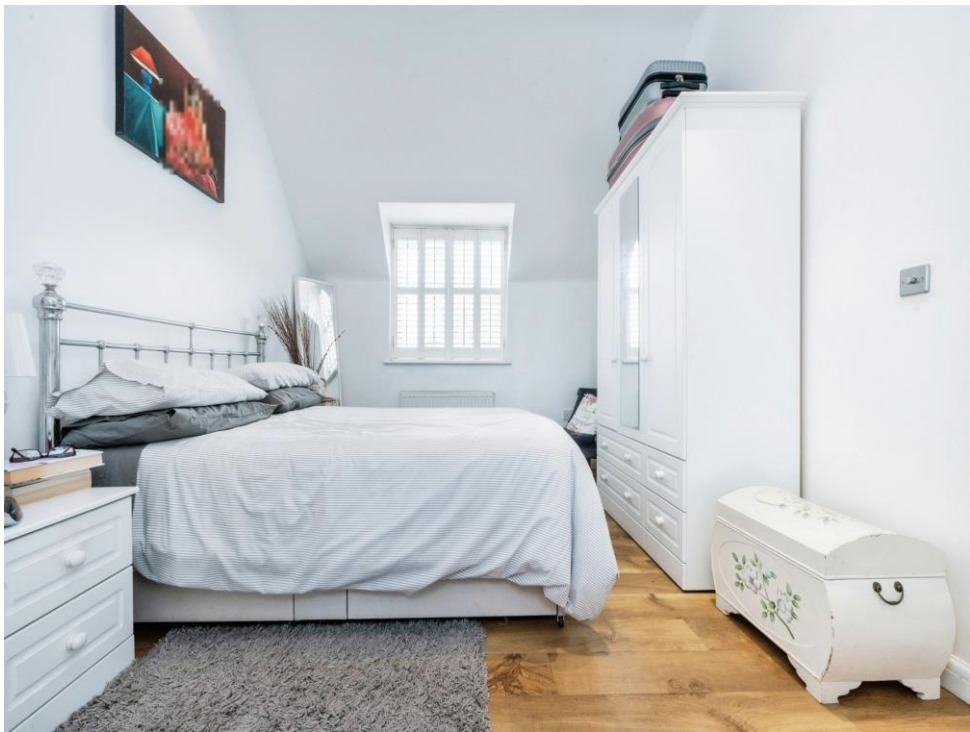
External

Rear Garden

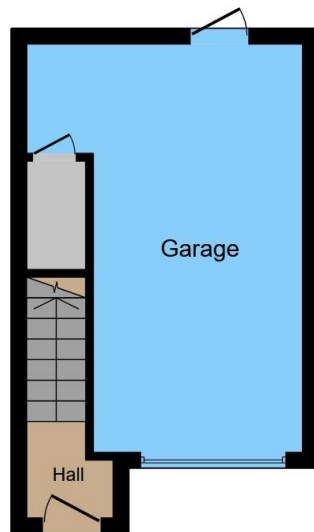
Single Garage

Two Allocated Parking Spaces

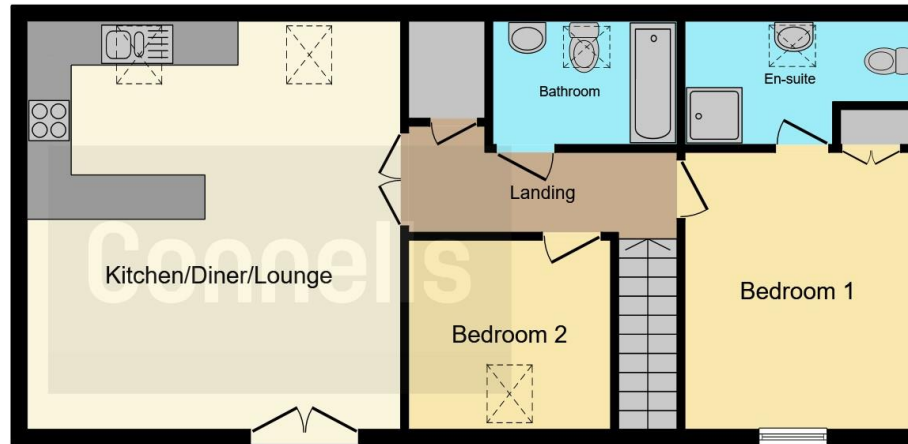








Ground Floor



First Floor

This floor plan is for illustrative purposes only. It is not drawn to scale. Any measurements, floor areas (including any total floor area), openings and orientation are approximate. No details are guaranteed, they cannot be relied upon for any purpose and they do not form part of any agreement. No liability is taken for any error, omission or misstatement. A party must rely upon its own inspection(s). Powered by www.focalagent.com

To view this property please contact Connells on

T 01234 345 303
E bedford@connells.co.uk

42 Allhallows
BEDFORD MK40 1LN

EPC Rating: C

Tenure: Freehold

view this property online connells.co.uk/Property/BED311949



1. MONEY LAUNDERING REGULATIONS Intending purchasers will be asked to produce identification documentation at a later stage and we would ask for your co-operation in order that there will be no delay in agreeing the sale. 2. These particulars do not constitute part or all of an offer or contract. 3. The measurements indicated are supplied for guidance only and as such must be considered incorrect. Potential buyers are advised to recheck measurements before committing to any expense. 4. We have not tested any apparatus, equipment, fixtures, fittings or services and it is in the buyers interest to check the working condition of any appliances.

Connells Residential is registered in England and Wales under company number 1489613, Registered Office is Cumbria House, 16-20 Hockliffe Street, Leighton Buzzard, Bedfordshire, LU7 1GN. VAT Registration Number is 500 2481 05.

See all our properties at www.connells.co.uk | www.rightmove.co.uk | www.zoopla.co.uk

Property Ref: BED311949 - 0002