



Connells

Honeysuckle Way
Bedford



Property Description

An elegant three-bedroom end of terraced residence featuring a detached garage and a spacious driveway for two vehicles. The property boasts an inviting entrance porch leading to a stylish lounge, which in turn provides access to the well-appointed kitchen diner at the rear. The kitchen is equipped with ample eye and base level units, as well as space for a fridge freezer and washing machine, with direct access to the rear garden. Upstairs, the property offers three bedrooms, including a master bedroom with built-in wardrobes, along with a separate family bathroom.

Externally, the property presents a generous front garden, predominantly laid to lawn and shingle, bordered by a hedgerow for added privacy. The private rear garden also features a lawn area, a patio area for extra outside seating and is complemented by external lighting and a water tap, creating a luxurious outdoor space for relaxation and entertainment.



Entrance Hall

Lounge

13' x 11' 4" (3.96m x 3.45m)

Kitchen

10' 11" x 9' 4" (3.33m x 2.84m)

First Floor

Landing

Bedroom One

12' 1" x 12' (3.68m x 3.66m)

Bedroom Two

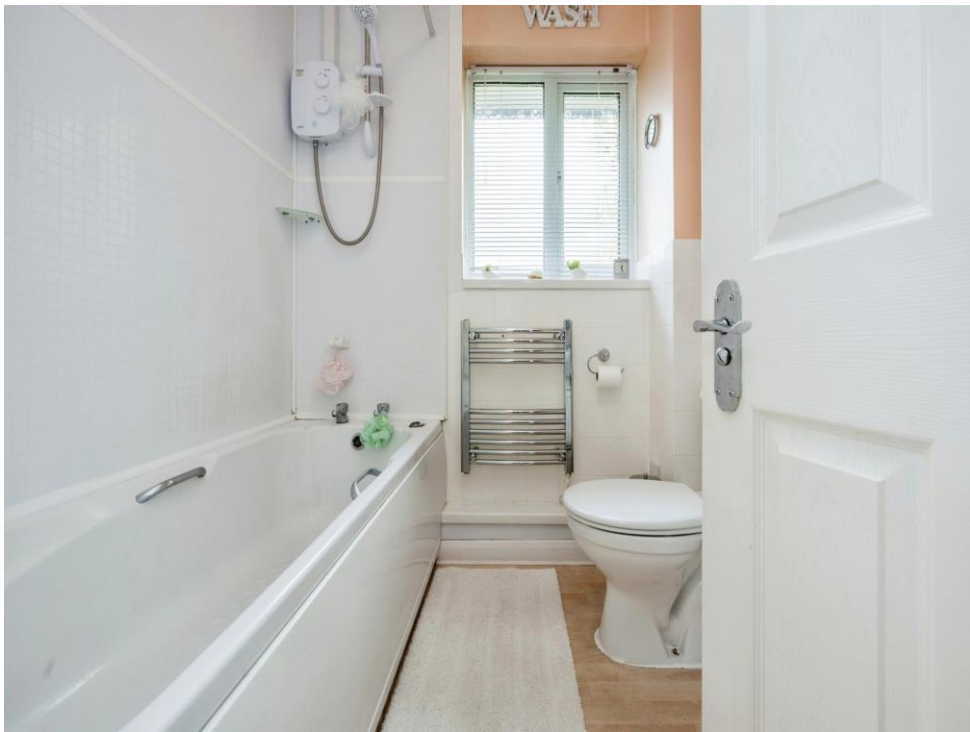
12' x 10' 4" (3.66m x 3.15m)

Bedroom Three

7' 6" x 6' 3" (2.29m x 1.91m)

Bathroom









This floor plan is for illustrative purposes only. It is not drawn to scale. Any measurements, floor areas (including any total floor area), openings and orientation are approximate. No details are guaranteed, they cannot be relied upon for any purpose and they do not form part of any agreement. No liability is taken for any error, omission or misstatement. A party must rely upon its own inspection(s). Powered by www.focalagent.com

To view this property please contact Connells on

T 01933 312 363
E rushden@connells.co.uk

66 High Street
 RUSHDEN NN10 0PJ

EPC Rating: E

Tenure: Freehold

view this property online connells.co.uk/Property/BED311630



1. MONEY LAUNDERING REGULATIONS Intending purchasers will be asked to produce identification documentation at a later stage and we would ask for your co-operation in order that there will be no delay in agreeing the sale. 2. These particulars do not constitute part or all of an offer or contract. 3. The measurements indicated are supplied for guidance only and as such must be considered incorrect. Potential buyers are advised to recheck measurements before committing to any expense. 4. We have not tested any apparatus, equipment, fixtures, fittings or services and it is in the buyers interest to check the working condition of any appliances.

Connells Residential is registered in England and Wales under company number 1489613, Registered Office is Cumbria House, 16-20 Hockliffe Street, Leighton Buzzard, Bedfordshire, LU7 1GN. VAT Registration Number is 500 2481 05.

See all our properties at www.connells.co.uk | www.rightmove.co.uk | www.zoopla.co.uk

Property Ref: BED311630 - 0004