



Connells

Moore Gardens
Wootton Bedford



Property Description

The village of Wootton itself is known for its charming atmosphere, with quaint shops, local pubs, and beautiful countryside walks. Families will appreciate the proximity to schools, parks, and community centres, making it easy to stay active and engaged in the local community.

Inside the property, the spacious living room is perfect for family gatherings or quiet evenings in, while the modern kitchen is equipped with all the necessary appliances for easy meal preparation. The dining area offers a lovely space for enjoying meals together, with large windows providing plenty of natural light.

The three bedrooms are all generously sized, with ample storage space and cozy decor. The master bedroom's en-suite bathroom adds a touch of luxury, while the family bathroom is perfect for busy mornings or relaxing baths after a long day.

Outside, the enclosed garden is a peaceful retreat, with a patio area for al fresco dining and a lawn for children to play. The garage and driveway provide space for vehicles, bikes, and outdoor equipment, making it easy to keep everything organised and secure.

Viewing of this property is highly advised!!



Entrance Hall

Cloakroom

Lounge

14' 1" x 11' 1" (4.29m x 3.38m)

Kitchen/Diner

18' 1" x 11' 5" (5.51m x 3.48m)

First Floor

Landing

Bedroom One

17' 9" Max x 10' 7" (5.41m Max x 3.23m)

Ensuite

Bedroom Two

13' 1" x 10' 8" (3.99m x 3.25m)

Bedroom Three

11' x 7' 2" (3.35m x 2.18m)

Bathroom

External

Front Garden

Rear Garden

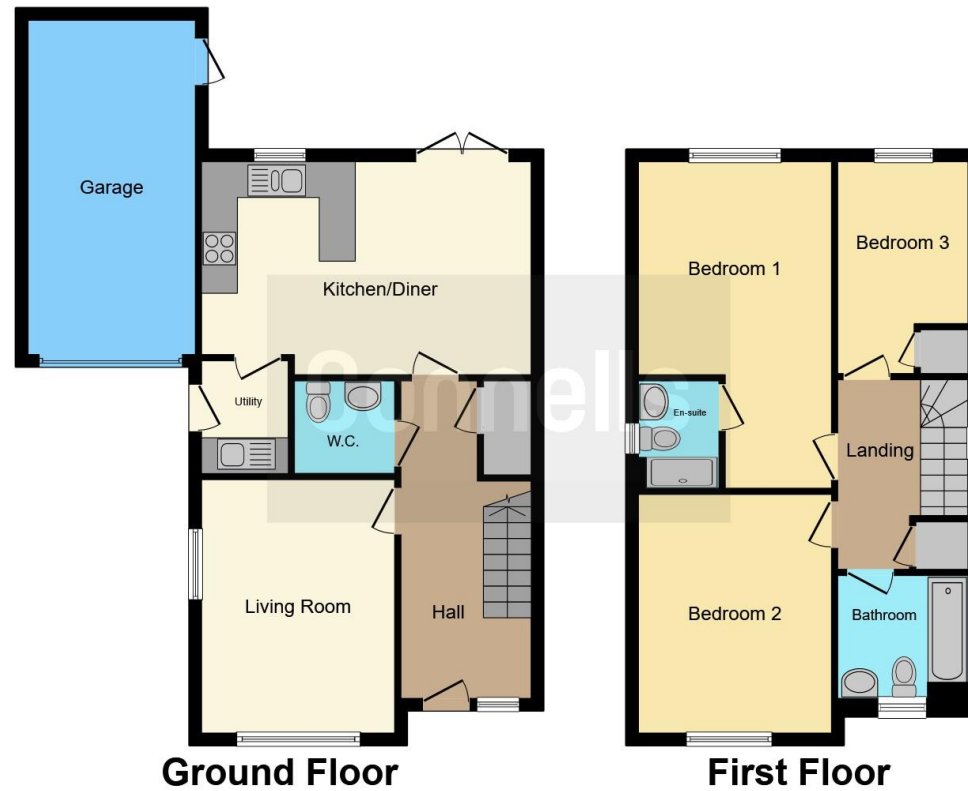
Parking

Single Garage









This floor plan is for illustrative purposes only. It is not drawn to scale. Any measurements, floor areas (including any total floor area), openings and orientation are approximate. No details are guaranteed, they cannot be relied upon for any purpose and they do not form part of any agreement. No liability is taken for any error, omission or misstatement. A party must rely upon its own inspection(s). Powered by www.focalagent.com

To view this property please contact Connells on

T 01234 345 303
E bedford@connells.co.uk

42 Allhallows
 BEDFORD MK40 1LN

EPC Rating: B

Tenure: Freehold

view this property online connells.co.uk/Property/BED311592



1. MONEY LAUNDERING REGULATIONS Intending purchasers will be asked to produce identification documentation at a later stage and we would ask for your co-operation in order that there will be no delay in agreeing the sale. 2. These particulars do not constitute part or all of an offer or contract. 3. The measurements indicated are supplied for guidance only and as such must be considered incorrect. Potential buyers are advised to recheck measurements before committing to any expense. 4. We have not tested any apparatus, equipment, fixtures, fittings or services and it is in the buyers interest to check the working condition of any appliances.

Connells Residential is registered in England and Wales under company number 1489613, Registered Office is Cumbria House, 16-20 Hockliffe Street, Leighton Buzzard, Bedfordshire, LU7 1GN. VAT Registration Number is 500 2481 05.

See all our properties at www.connells.co.uk | www.rightmove.co.uk | www.zoopla.co.uk

Property Ref: BED311592 - 0002