



Connells

Haylands Way
Bedford



Property Description

Located close to Goldington Academy on the South side of Putnoe is this impressive four double bedroom property offering approximately 1410 sq ft of bright accommodation across two floors. The ground floor comprises of an entrance hall, a downstairs cloakroom and three reception rooms. There is a refitted kitchen with a separate utility room with secure side access. On the first floor there are four double bedrooms of which the master bedroom has an en-suite shower room.

Externally to the front there is a paved double width driveway for multiple vehicles and to the rear there is a beautifully landscaped rear garden mainly laid to lawn with timber fencing. The garden is S/E facing and backs onto Goldington Academy playing fields.

The current vendors inform us there is a complete upper chain so this is a proceedable purchase. Call now to avoid disappointment.

Entrance Hall

Cloakroom

Lounge

15' 9" x 12' 4" (4.80m x 3.76m)

Second Reception Room

23' 1" x 13' 6" (7.04m x 4.11m)

Dining Room

15' 6" x 8' 2" (4.72m x 2.49m)

Kitchen

13' 6" x 12' 9" (4.11m x 3.89m)

Utility Room

10' x 4' 8" (3.05m x 1.42m)

First Floor

Landing

Bedroom One

15' 8" x 12' 4" (4.78m x 3.76m)

Ensuite

Bedroom Two

13' x 9' 9" (3.96m x 2.97m)

Bedroom Three

14' 7" x 8' 9" (4.45m x 2.67m)

Bedroom Four

8' 9" x 7' 7" (2.67m x 2.31m)

Bathroom

External

Front Garden

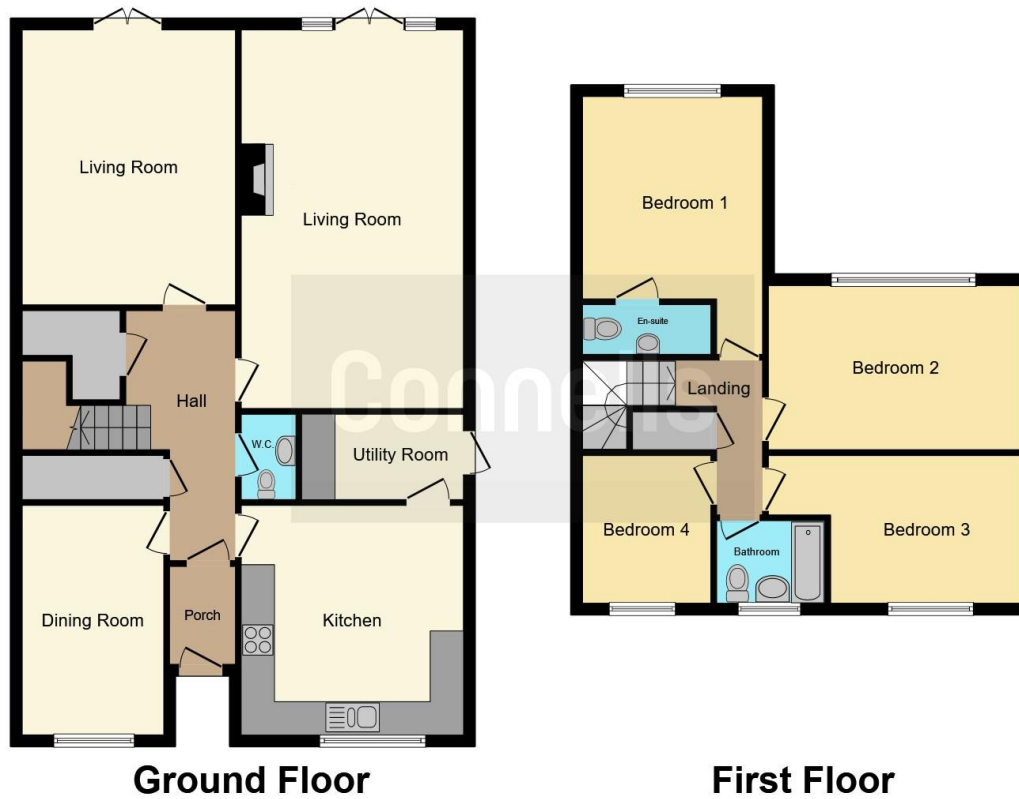
Rear Garden

Driveway









This floor plan is for illustrative purposes only. It is not drawn to scale. Any measurements, floor areas (including any total floor area), openings and orientation are approximate. No details are guaranteed, they cannot be relied upon for any purpose and they do not form part of any agreement. No liability is taken for any error, omission or misstatement. A party must rely upon its own inspection(s). Powered by www.focalagent.com

To view this property please contact Connells on

T 01234 345 303
E bedford@connells.co.uk

42 Allhallows
 BEDFORD MK40 1LN

EPC Rating: Awaited

Tenure: Freehold

view this property online connells.co.uk/Property/BED311740



1. MONEY LAUNDERING REGULATIONS Intending purchasers will be asked to produce identification documentation at a later stage and we would ask for your co-operation in order that there will be no delay in agreeing the sale. 2. These particulars do not constitute part or all of an offer or contract. 3. The measurements indicated are supplied for guidance only and as such must be considered incorrect. Potential buyers are advised to recheck measurements before committing to any expense. 4. We have not tested any apparatus, equipment, fixtures, fittings or services and it is in the buyers interest to check the working condition of any appliances.

Connells Residential is registered in England and Wales under company number 1489613, Registered Office is Cumbria House, 16-20 Hockliffe Street, Leighton Buzzard, Bedfordshire, LU7 1GN. VAT Registration Number is 500 2481 05.

See all our properties at www.connells.co.uk | www.rightmove.co.uk | www.zoopla.co.uk

Property Ref: BED311740 - 0004