



Connells

Thorne Close
Wixams Bedford



Property Description

Discover the perfect home in the desirable Wixams village with this detached gem. The kitchen/diner is a hub for culinary delights and social gatherings, while the four bedrooms spread across two floors offer flexibility and privacy. The master bedroom is a haven with its ensuite and wardrobe area, providing a touch of elegance. With a first-floor bathroom and a second-floor shower room, convenience is at your fingertips. The large rear garden is an oasis for relaxation and play, and the driveway ensures easy parking. Don't miss out on this fantastic opportunity to own a home in impeccable condition.



Entrance Hall

Cloakroom

Lounge

19' 3" Max into bay x 10' 7" (5.87m Max into bay x 3.23m)

Kitchen/diner

19' 4" Max into bay x 9' 6" (5.89m Max into bay x 2.90m)

Utility Room

6' 2" x 5' 10" (1.88m x 1.78m)

First Floor

Landing

Bedroom One

17' 10" Max into wardrobe x 11' 4" (5.44m Max into wardrobe x 3.45m)

Ensuite

Bedroom Two

11' x 9' 9" (3.35m x 2.97m)

Bathroom

Second Floor

Bedroom Three

14' 5" Max x 9' 8" (4.39m Max x 2.95m)

Bedroom Four

11' 5" x 8' 2" Max (3.48m x 2.49m Max)

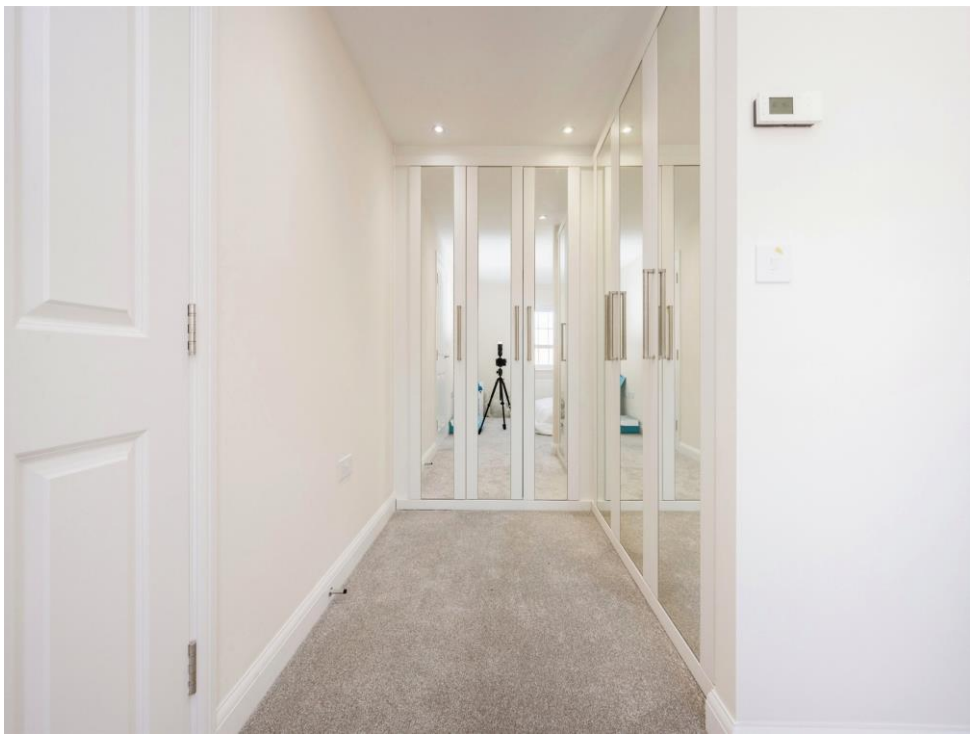
Shower Room

External

Rear Garden

Driveway

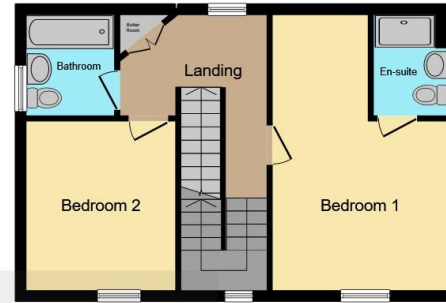




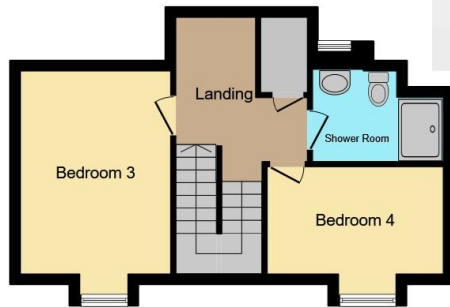




Ground Floor



First Floor



Second Floor

Connells

This floor plan is for illustrative purposes only. It is not drawn to scale. Any measurements, floor areas (including any total floor area), openings and orientation are approximate. No details are guaranteed, they cannot be relied upon for any purpose and they do not form part of any agreement. No liability is taken for any error, omission or misstatement. A party must rely upon its own inspection(s). Powered by www.focalagent.com

To view this property please contact Connells on

T 01234 345 303
E bedford@connells.co.uk

42 Allhallows
BEDFORD MK40 1LN

EPC Rating: B

view this property online connells.co.uk/Property/BED311583

Tenure: Freehold



1. MONEY LAUNDERING REGULATIONS Intending purchasers will be asked to produce identification documentation at a later stage and we would ask for your co-operation in order that there will be no delay in agreeing the sale. 2. These particulars do not constitute part or all of an offer or contract. 3. The measurements indicated are supplied for guidance only and as such must be considered incorrect. Potential buyers are advised to recheck measurements before committing to any expense. 4. We have not tested any apparatus, equipment, fixtures, fittings or services and it is in the buyers interest to check the working condition of any appliances.

Connells Residential is registered in England and Wales under company number 1489613, Registered Office is Cumbria House, 16-20 Hockliffe Street, Leighton Buzzard, Bedfordshire, LU7 1GN. VAT Registration Number is 500 2481 05.

See all our properties at www.connells.co.uk | www.rightmove.co.uk | www.zoopla.co.uk

Property Ref: BED311583 - 0003