



Connells

Anstee Road
Luton



Property Description

A rare opportunity to purchase a well-presented one-bedroom detached bungalow on the popular Anstee Road. Offering a bright lounge/diner, fitted kitchen, modern shower room, generous double bedroom, this charming property is ideal for first-time buyers or downsizers. Located close to local shops, bus routes and the M1, it offers both convenience and privacy. Early viewing recommended.

Fitted with low level wc. Wash hand basin. Bath with mixer taps and shower attachment. Electric shower. Extractor fan. Radiator.

Outside

Front Garden

Driveway

Rear Garden

Entrance Porch

Double glazed door to front. Radiator.

Lounge

Double glazed window to front. Radiator. TV point.

Kitchen

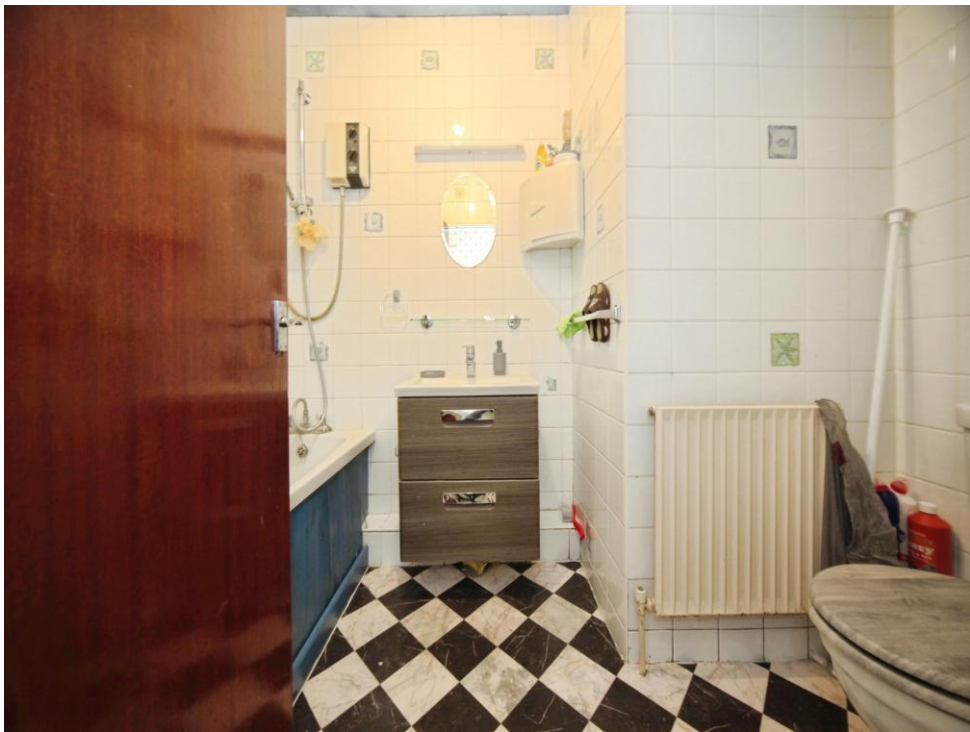
Fitted with wall and base units. Stainless steel sink drainer. Work surfaces. Plumbing and space for appliances. Radiator. Double glazed window to front.

Bedroom One

Double glazed window to side.

Bathroom







Floor Plan

Total floor area 39.3 m² (423 sq.ft.) approx

This floor plan is for illustrative purposes only. It is not drawn to scale. Any measurements, floor areas (including any total floor area), openings and orientation are approximate. No details are guaranteed, they cannot be relied upon for any purpose and they do not form part of any agreement. No liability is taken for any error, omission or misstatement. A party must rely upon its own inspection(s). Powered by www.propertybox.io

Connells

To view this property please contact Connells on

T 01582 595 127
E leagrave@connells.co.uk

185 Marsh Road Leagrave
 LUTON LU3 2QQ

EPC Rating: D Council Tax
 Band: B

Tenure: Freehold

view this property online connells.co.uk/Property/LGR312152



1. MONEY LAUNDERING REGULATIONS Intending purchasers will be asked to produce identification documentation at a later stage and we would ask for your co-operation in order that there will be no delay in agreeing the sale. 2. These particulars do not constitute part or all of an offer or contract. 3. The measurements indicated are supplied for guidance only and as such must be considered incorrect. Potential buyers are advised to recheck measurements before committing to any expense. 4. We have not tested any apparatus, equipment, fixtures, fittings or services and it is in the buyers interest to check the working condition of any appliances.

Connells Residential is registered in England and Wales under company number 1489613, Registered Office is Cumbria House, 16-20 Hockliffe Street, Leighton Buzzard, Bedfordshire, LU7 1GN. VAT Registration Number is 500 2481 05.

See all our properties at www.connells.co.uk | www.rightmove.co.uk | www.zoopla.co.uk

Property Ref: LGR312152 - 0002