



Connells

Brickly Road  
Luton





This floor plan is for illustrative purposes only. It is not drawn to scale. Any measurements, floor areas (including any total floor area), openings and orientation are approximate. No details are guaranteed, they cannot be relied upon for any purpose and they do not form part of any agreement. No liability is taken for any error, omission or misstatement. A party must rely upon its own inspection(s). Powered by [www.focalagent.com](http://www.focalagent.com)



## Property Description

Connells Leagrave bring to the market a CHAIN FREE three bedroom mid terraced property. Brickly Road briefly comprises an entrance porch, lounge, kitchen/diner. The upper floor contains three bedrooms and a family bathroom suite. Externally the property benefits from a low maintenance front and rear garden. With off street parking to the rear of the property.

This three bedroom home is located in Luton with close proximity to a range of amenities, schools, shopping facilities, food/drink establishments and more. The area also offers excellent road and transport links for travel both locally and further afield.

### Entrance Porch

Double glazed door to side aspect.

### Entrance Hall

Door to front aspect.

### Lounge

14' 8" x 14' 3" ( 4.47m x 4.34m )  
Double glazed window to front aspect. Gas fire. Radiator.

### Kitchen/Diner

14' 8" x 9' 11" ( 4.47m x 3.02m )  
Double glazed window and door to rear aspect. Fitted kitchen comprising a range of wall and base units with work surfaces over incorporating a stainless steel sink and drainer unit. Plumbing for a washing machine. Gas hob with electric oven and cooker hood over. Boiler. Radiator.

## First Floor Landing

Loft access.

## Bedroom One

15' 8" x 8' 6" ( 4.78m x 2.59m )  
Double glazed window to front aspect. Built in cupboard. Radiator.

## Bedroom Two

9' 3" x 8' 3" ( 2.82m x 2.51m )  
Double glazed window to rear aspect.  
Radiator.

## Bedroom Three

10' 9" x 6' ( 3.28m x 1.83m )  
Double glazed window to front aspect. Built in wardrobe. Radiator.

## Bathroom

Double glazed window to rear aspect. Suite comprising bath with mixer taps and shower over, wash hand basin and low level wc. Fully tiled. Radiator.

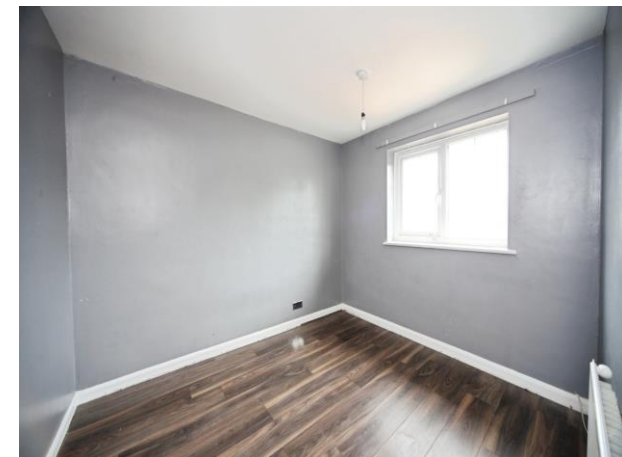
## Front Garden

Paved.

## Rear Garden

Block paved.





To view this property please contact Connells on

**T 01582 595 127**  
**E legrave@connells.co.uk**

185 Marsh Road Legrave  
 LUTON LU3 2QQ

EPC Rating: C Council Tax  
 Band: B

Tenure: Freehold

**view this property online [connells.co.uk/Property/LGR311698](https://connells.co.uk/Property/LGR311698)**



1. MONEY LAUNDERING REGULATIONS Intending purchasers will be asked to produce identification documentation at a later stage and we would ask for your co-operation in order that there will be no delay in agreeing the sale. 2. These particulars do not constitute part or all of an offer or contract. 3. The measurements indicated are supplied for guidance only and as such must be considered incorrect. Potential buyers are advised to recheck measurements before committing to any expense. 4. We have not tested any apparatus, equipment, fixtures, fittings or services and it is in the buyers interest to check the working condition of any appliances.

Connells Residential is registered in England and Wales under company number 1489613, Registered Office is Cumbria House, 16-20 Hockliffe Street, Leighton Buzzard, Bedfordshire, LU7 1GN. VAT Registration Number is 500 2481 05.

**See all our properties at [www.connells.co.uk](https://www.connells.co.uk) | [www.rightmove.co.uk](https://www.rightmove.co.uk) | [www.zoopla.co.uk](https://www.zoopla.co.uk)**

Property Ref: LGR311698 - 0003