

for sale

**£280,000** Freehold



## Bunting Road Luton LU4 0UA

- Energy Rating: Awaited
- Two Bedrooms
- Semi Detached
- Popular Birds Estate
- Off Street Parking



# Property Details

## Entrance Hall

Double glazed door and window to side aspect. Telephone points. Radiator.

## Lounge 12' 6" x 9' 10" ( 3.81m x 3.00m )

Double glazed patio doors to rear aspect. Double glazed window to side aspect. Television and telephone points. Radiator.

## Kitchen 12' 6" x 10' 2" ( 3.81m x 3.10m )

Double glazed window to front aspect. Fitted kitchen comprising a range of wall and base units with work surfaces over incorporating a stainless steel sink and drainer unit. Plumbing for a washing machine. Space for a fridge/freezer. Space for a freestanding electric oven. Cooker hood. Combi boiler. Radiator.

## First Floor Landing

Double glazed window to side aspect. Loft access.

## Bedroom One 12' 6" x 9' 8" ( 3.81m x 2.95m )

Double glazed window to rear aspect. Radiator.

## Bedroom Two 10' 2" x 6' plus door recess ( 3.10m x 1.83m plus door recess )

Double glazed window to front aspect. Telephone point. Radiator.

## Bathroom

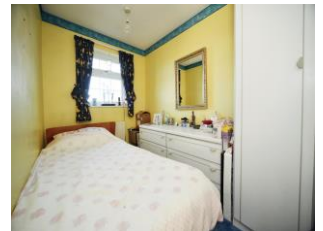
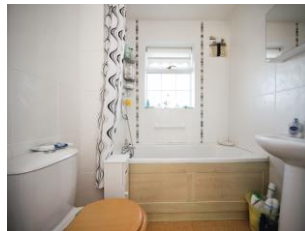
Double glazed window to front aspect. Suite comprising bath with mixer taps and shower attachment, wash hand basin and low level wc. Fully tiled. Radiator.

## Front Garden

Laid to lawn area. Off street parking.

## Rear Garden

Laid to lawn with a patio area. Shed.



To view this property please contact Connells on

**T 01582 595 127**  
**E [leagrave@connells.co.uk](mailto:leagrave@connells.co.uk)**

185 Marsh Road Leagrave  
LUTON LU3 2QQ

**Tenure:** Freehold

**EPC Rating:** Awaited

Property Ref: LGR311328 - 0002

1. MONEY LAUNDERING REGULATIONS Intending purchasers will be asked to produce identification documentation at a later stage and we would ask for your co-operation in order that there will be no delay in agreeing the sale. 2. These particulars do not constitute part or all of an offer or contract. 3. The measurements indicated are supplied for guidance only and as such must be considered incorrect. Potential buyers are advised to recheck measurements before committing to any expense. 4. We have not tested any apparatus, equipment, fixtures, fittings or services and it is in the buyers interest to check the working condition of any appliances.

Connells Residential is registered in England and Wales under company number 1489613, Registered Office is Cumbria House, 16-20 Hockliffe Street, Leighton Buzzard, Bedfordshire, LU7 1GN. VAT Registration Number is 500 2481 05.

see all our properties at [www.connells.co.uk](http://www.connells.co.uk) | [www.rightmove.co.uk](http://www.rightmove.co.uk) | [www.zoopla.co.uk](http://www.zoopla.co.uk)