

for sale

**£230,000** Freehold



## Howard Close Luton LU3 2PG

- Energy Rating: C
- Two Bedrooms
- Cluster Home
- Freehold Property
- Private Rear Garden



# Property Details

## Entrance Hall

Double glazed door to front aspect. Radiator.

**Lounge** 12' 7" plus door recess x 11' 7" ( 3.84m plus door recess x 3.53m )

Double glazed patio doors to rear aspect. Television and telephone points. Radiator.

**Kitchen** 11' 8" x 6' 5" ( 3.56m x 1.96m )

Double glazed window to front aspect. Fitted kitchen comprising a range of wall and base units with work surfaces over incorporating a stainless steel sink and drainer unit. Plumbing for a washing machine and dishwasher. Space for a fridge/freezer. Gas hob with electric oven and cooker hood over. Radiator.

**Bedroom One** 11' 8" x 8' 6" plus door recess ( 3.56m x 2.59m plus door recess )

Double glazed window to rear aspect. Loft access. Radiator.

**Bedroom Two** 11' 8" x 6' 7" ( 3.56m x 2.01m )

Double glazed window to front aspect. Radiator.

## Bathroom

Double glazed window to side aspect. Suite comprising bath with mixer taps and electric shower attachment, wash hand basin and low level wc. Part tiled. Radiator.

## Front Garden

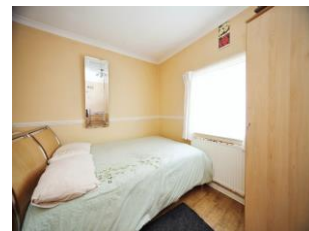
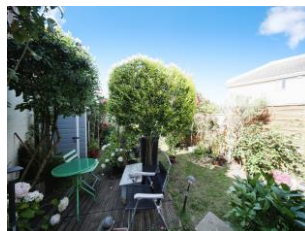
Laid to lawn with paved path leading to front door.

## Rear Garden

Laid to lawn with a patio and decking area. Shed.

## Parking

Allocated parking space.



To view this property please contact Connells on

**T 01582 595 127**  
**E [leagrave@connells.co.uk](mailto:leagrave@connells.co.uk)**

185 Marsh Road Leagrave  
LUTON LU3 2QQ

**Tenure:** Freehold

**EPC Rating:** C

Property Ref: LGR310989 - 0002

1. MONEY LAUNDERING REGULATIONS Intending purchasers will be asked to produce identification documentation at a later stage and we would ask for your co-operation in order that there will be no delay in agreeing the sale. 2. These particulars do not constitute part or all of an offer or contract. 3. The measurements indicated are supplied for guidance only and as such must be considered incorrect. Potential buyers are advised to recheck measurements before committing to any expense. 4. We have not tested any apparatus, equipment, fixtures, fittings or services and it is in the buyers interest to check the working condition of any appliances.

Connells Residential is registered in England and Wales under company number 1489613, Registered Office is Cumbria House, 16-20 Hockliffe Street, Leighton Buzzard, Bedfordshire, LU7 1GN. VAT Registration Number is 500 2481 05.

see all our properties at [www.connells.co.uk](http://www.connells.co.uk) | [www.rightmove.co.uk](http://www.rightmove.co.uk) | [www.zoopla.co.uk](http://www.zoopla.co.uk)