



Connells

Armstrong Road
Luton



Property Description

Connells Stopsley Bring To The Market A Beautifully Presented Three Bedroom Detached Family Home, Built In 2020 And Finished To A Very High Standard Throughout. Armstrong Road Is The Perfect Location For Commuting Towards London.

Armstrong Road Comprises Of A Spacious Entrance Hall. Cloakroom, Large Lounge And Beautiful Kitchen/Diner. The Upper Floor Comprises Of A Master Bedroom With An Ensuite, Two Additional Spacious Bedrooms And A Family Bathroom Suite. Externally The Property Has Off Street Parking, A Detached Garage Split Into A Home Office And Storage Space.

Armstrong Road is located off Kimpton Road in the new development called Eaton Green Heights in South Luton. Many local shops and amenities are located within walking distance including Luton Town Centre and both stations. Gypsy Lane is also within a short walk which has an array of shops. J10 of the M1 is also within easy reach. Great Bus links also provide you with easy access to Dunstable and the Airport, further benefits include a new Tesco opening shortly.

Entrance Hall

Double glazed door to front. Radiator.

Cloakroom

Fitted with low level wc. Wash hand basin. Radiator. Double glazed window to front.

Study (garage)

10' 7" x 8' 8" (3.23m x 2.64m)
Double glazed patio door to rear.

Lounge

11' 6" x 15' 4" (3.51m x 4.67m)
Double glazed window to front. Radiator. TV point.

Kitchen

13' 6" x 18' 11" (4.11m x 5.77m)
Fitted with wall and base units. Sink drainer. Work surfaces. Electric oven. Gas hob. Cooker hood. Integrated appliances. Radiator. Double glazed window and patio doors to rear
Laundry Cupboard housing washer dryer. Extractor fan.

Landing

Double glazed window to side. Loft access via ladder. Cupboard containing boiler,

Bedroom One

11' 7" x 11' 10" (3.53m x 3.61m)
Double glazed window to front. Fitted wardrobes. Radiator.

En Suite

Fitted with low level wc. Wash hand basin. Shower cubicle. Shaver point. Radiator. Extractor fan. Double glazed window to side.

Bedroom Two

11' 5" x 11' 5" (3.48m x 3.48m)
Double glazed window to rear. Radiator.

Bedroom Three

7' 2" x 11' 8" (2.18m x 3.56m)
Double glazed window to rear. Radiator.

Bathroom

Fitted with low level wc. Wash hand basin. Bath with mixer taps and shower. Shaver point. Radiator. Double glazed window to front.

Outside

Front Garden

Block paved driveway. Laid to lawn.

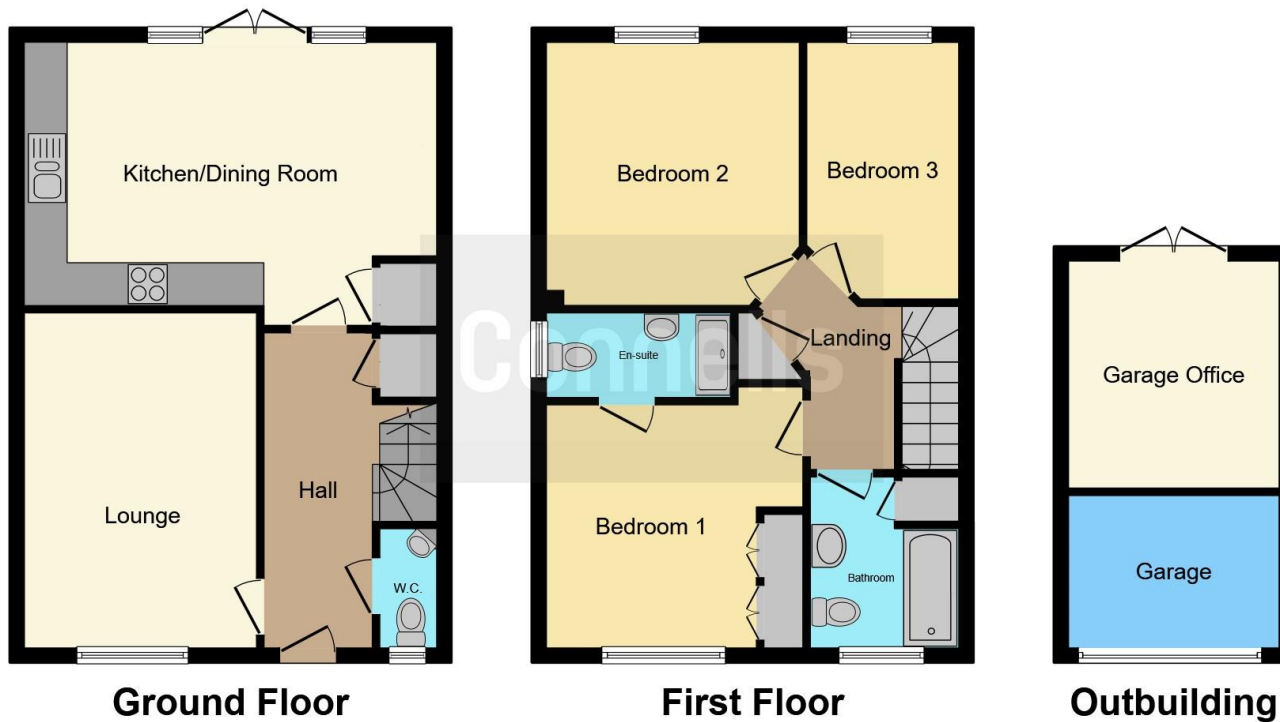
Rear Garden

Paved patio area. Laid to lawn. Shed.

Garage

Access via up and over door.





This floor plan is for illustrative purposes only. It is not drawn to scale. Any measurements, floor areas (including any total floor area), openings and orientation are approximate. No details are guaranteed, they cannot be relied upon for any purpose and they do not form part of any agreement. No liability is taken for any error, omission or misstatement. A party must rely upon its own inspection(s). Powered by www.focalagent.com

To view this property please contact Connells on

T 01582 737 069
E stopsley@connells.co.uk

Jansel House Parade 656 Hitchin Road Stopsley
 LUTON LU2 7XH

EPC Rating: B

view this property online connells.co.uk/Property/STP307299

Tenure: Freehold



1. MONEY LAUNDERING REGULATIONS Intending purchasers will be asked to produce identification documentation at a later stage and we would ask for your co-operation in order that there will be no delay in agreeing the sale. 2. These particulars do not constitute part or all of an offer or contract. 3. The measurements indicated are supplied for guidance only and as such must be considered incorrect. Potential buyers are advised to recheck measurements before committing to any expense. 4. We have not tested any apparatus, equipment, fixtures, fittings or services and it is in the buyers interest to check the working condition of any appliances.

Connells Residential is registered in England and Wales under company number 1489613, Registered Office is Cumbria House, 16-20 Hockliffe Street, Leighton Buzzard, Bedfordshire, LU7 1GN. VAT Registration Number is 500 2481 05.

See all our properties at www.connells.co.uk | www.rightmove.co.uk | www.zoopla.co.uk

Property Ref: STP307299 - 0003