



Connells

Felix Avenue
Luton



Property Description

Connells Stopsley present a three bedroom semi detached bungalow located in the popular Round Green area of Luton. Felix Avenue briefly comprises of an entrance hall, three spacious bedrooms, modern bathroom suite, lounge and kitchen area. Externally the property benefits from a garage, and the property boasts extension potential STPP.

The property is Situated in Felix Avenue, this bungalow benefits from being near Stopsley Village, where you can find a variety of local shops, supermarkets, restaurants, and cafes. The area is well-connected, with excellent transport links providing easy access to Luton town centre, London Luton Airport, and other nearby towns. The quiet cul-de-sac positioning of the property ensures peaceful living, offering an escape from the hustle and bustle of daily life. Don't miss out on this fantastic opportunity – arrange a viewing today!

Entrance Hall

Double glazed door to side. Radiator. Loft access.

Lounge

11' 7" x 13' 3" (3.53m x 4.04m)
Double glazed window to rear. Radiator. TV point.

Kitchen

11' 10" x 6' 9" (3.61m x 2.06m)
Fitted with wall and base units. Sink drainer. Work surfaces. Integrated electric oven. Gas hob. Cooker hood. Plumbing and space for appliances. Radiator. Double glazed window to rear and side. Door to side.

Bedroom One

13' 1" x 11' 11" (3.99m x 3.63m)
Double glazed window to front. Radiator.

Bedroom Two

11' 6" x 11' 5" (3.51m x 3.48m)
Double glazed window to front. Radiator. TV

Point. Fitted wardrobes.

Bedroom Three

10' 2" x 8' 8" (3.10m x 2.64m)
Double glazed window to side. Radiator.

Bathroom

Fitted with low level wc. Wash hand basin. Walk in shower. Extractor fan. Radiator. Double glazed window to side.

Outside

Front Garden

Paved pathway to entrance. Laid to lawn.

Rear Garden

Patio area. Laid to lawn. Shed. Outhouse with plumbing and electric.

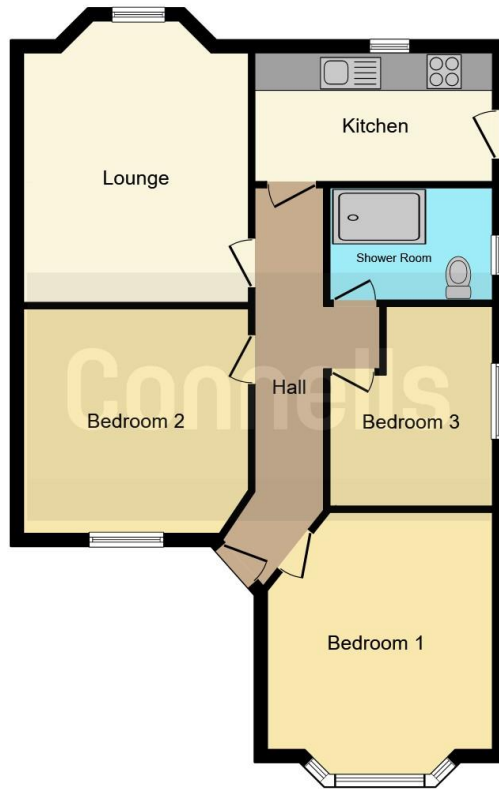
Garage

Up and over door. Power and light.

Loft Space

Large Storage area. Loft conversion STPP





This floor plan is for illustrative purposes only. It is not drawn to scale. Any measurements, floor areas (including any total floor area), openings and orientation are approximate. No details are guaranteed, they cannot be relied upon for any purpose and they do not form part of any agreement. No liability is taken for any error, omission or misstatement. A party must rely upon its own inspection(s). Powered by www.focalagent.com

To view this property please contact Connells on

T 01582 737 069
E stopsley@connells.co.uk

Jansel House Parade 656 Hitchin Road Stopsley
 LUTON LU2 7XH

EPC Rating: D

view this property online connells.co.uk/Property/STP307907



Tenure: Freehold



1. MONEY LAUNDERING REGULATIONS Intending purchasers will be asked to produce identification documentation at a later stage and we would ask for your co-operation in order that there will be no delay in agreeing the sale. 2. These particulars do not constitute part or all of an offer or contract. 3. The measurements indicated are supplied for guidance only and as such must be considered incorrect. Potential buyers are advised to recheck measurements before committing to any expense. 4. We have not tested any apparatus, equipment, fixtures, fittings or services and it is in the buyers interest to check the working condition of any appliances.

Connells Residential is registered in England and Wales under company number 1489613, Registered Office is Cumbria House, 16-20 Hockliffe Street, Leighton Buzzard, Bedfordshire, LU7 1GN. VAT Registration Number is 500 2481 05.

See all our properties at www.connells.co.uk | www.rightmove.co.uk | www.zoopla.co.uk

Property Ref: STP307907 - 0002