



Connells

Saywell Road
Luton



Property Description

Connells Stopsley present a three bedroom semi detached chalet bungalow located in the popular Round Green area of Stopsley. Saywell Road briefly comprises of an entrance hall, kitchen area, bathroom suite, lounge/diner, two downstairs bedrooms. The upper floor contains an additional bedroom. Externally the property benefits from off street parking to the front as well as an integral garage.

Outside

Front Garden

Rear Garden

Entrance Hall

Double glazed door to front. Radiator.

Lounge

11' x 9' 7" (3.35m x 2.92m)

Double glazed window to front. Radiator.

Kitchen

8' 7" x 10' 1" (2.62m x 3.07m)

Fitted with wall and base units. Stainless steel sink drainer. Plumbing and space for appliances. Radiator. Double glazed window to front. Double glazed door to side.

Landing

Stairs rising from entrance hall. Radiator.

Bedroom One

9' 7" x 14' (2.92m x 4.27m)

Double glazed window to rear. Built in cupboard. Radiator.

Bedroom Two

13' 7" x 11' 1" (4.14m x 3.38m)

Double glazed window to rear. Radiator.

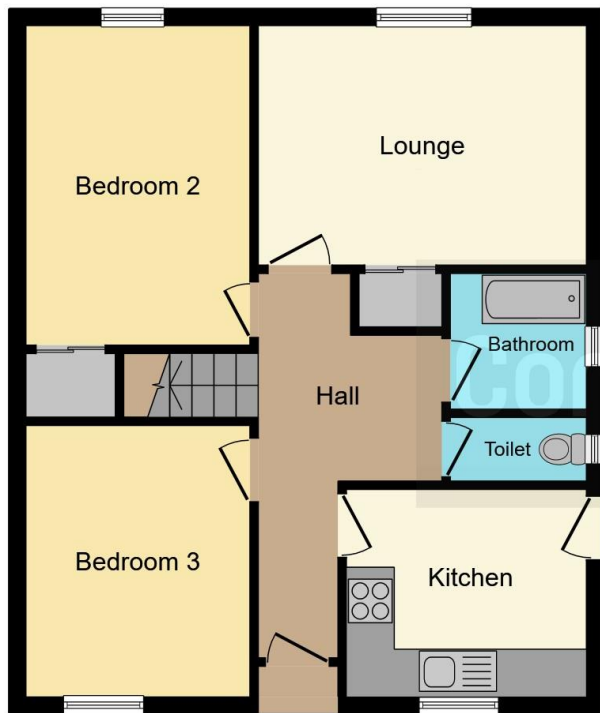
Bedroom Three

13' 8" x 15' 2" (4.17m x 4.62m)

Double glazed window to front and side. Radiator. Wash hand basin.

Bathroom





Ground Floor



First Floor

This floor plan is for illustrative purposes only. It is not drawn to scale. Any measurements, floor areas (including any total floor area), openings and orientation are approximate. No details are guaranteed, they cannot be relied upon for any purpose and they do not form part of any agreement. No liability is taken for any error, omission or misstatement. A party must rely upon its own inspection(s). Powered by www.focalagent.com

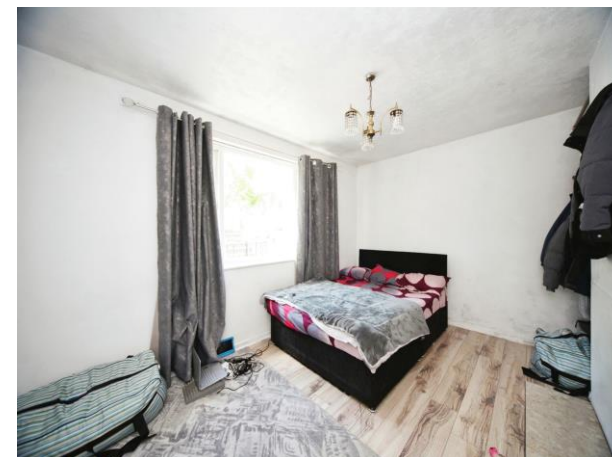
To view this property please contact Connells on

T 01582 737 069
E stopsley@connells.co.uk

Jansel House Parade 656 Hitchin Road Stopsley
 LUTON LU2 7XH

EPC Rating: D

view this property online connells.co.uk/Property/STP307402



Tenure: Freehold



1. MONEY LAUNDERING REGULATIONS Intending purchasers will be asked to produce identification documentation at a later stage and we would ask for your co-operation in order that there will be no delay in agreeing the sale. 2. These particulars do not constitute part or all of an offer or contract. 3. The measurements indicated are supplied for guidance only and as such must be considered incorrect. Potential buyers are advised to recheck measurements before committing to any expense. 4. We have not tested any apparatus, equipment, fixtures, fittings or services and it is in the buyers interest to check the working condition of any appliances.

Connells Residential is registered in England and Wales under company number 1489613, Registered Office is Cumbria House, 16-20 Hockliffe Street, Leighton Buzzard, Bedfordshire, LU7 1GN. VAT Registration Number is 500 2481 05.

See all our properties at www.connells.co.uk | www.rightmove.co.uk | www.zoopla.co.uk

Property Ref: STP307402 - 0002