



Connells

Middleton Road
Luton



Property Description

Originally a four bedroom is this detached residence in the Puttridge area of LU2. The property is a blank canvas leaving it to your imagination to run wild allowing you to invent your own forever home. The family home come with an integral garage and driveway for multiple cars. There is potential to extend (STPP).

Briefly internally comprises of; hallway, 30'foot lounge, cloakroom and kitchen downstairs. Upstairs are three good size bedrooms and family bathroom located off the landing. Externally there is a well maintained rear garden with shrubs and shed, gate to front and door to garage.

To the front is a block paved drive for multiple cars and shrub area.

The property has been extended to front aspect by the current owner making a larger than average lounge and hallway, there is also potential to extend the property further (STPP.)

Located in a cul-de-sac a stones through away from Wandon Park which opens to countryside, perfect for quiet secluded living.

Schools surrounding the accommodation include Puttridge Primary and High as well as Someries Infant and Junior.

Call now to book your private viewing!

Entrance Hall

Double glazed door and window to front. Carpet. Stairs rising to first floor. Radiator. Under stairs storage cupboard.

Cloakroom

Fitted with low level wc. Wash hand basin. Partly tiled.

Lounge

30' 4" x 12' 3" (9.25m x 3.73m)
Double glazed bay window to front. Carpet. Radiators. Double glazed patio doors and window to rear.

Kitchen

8' 1" x 15' (2.46m x 4.57m)
Fitted with wall and base units. Sink drainer. Work surfaces. Integrated gas hob and electric cooker. Cooker hood. Plumbing and space for appliances. Partly tiled. Double glazed door to side. Double glazed window to rear.

Landing

Fitted carpet. Loft access. Airing cupboard housing hot water tank.

Bedroom One

21' 6" x 12' 4" (6.55m x 3.76m)
Double glazed window to front and rear. Fitted carpet. Radiator. Built in wardrobes. Storage cupboard.

Bedroom Two

10' 3" x 11' 9" (3.12m x 3.58m)
Double glazed window to front. Fitted carpet. Radiator. Storage cupboard.

Bedroom Three

9' 2" x 8' 4" (2.79m x 2.54m)
Double glazed window to rear. Fitted carpet. Radiator. Storage cupboard.

Bathroom

Fitted with low level wc. Wash hand basin. Corner bath with shower attachment. Radiator. Partly tiled. Double glazed window to rear.

Outside

Front Garden

Block paved driveway for multiple cars. Shrub and shingled area.

Rear Garden

Paved patio area. Laid to lawn. Shed. Outside tap. Gated access to front.

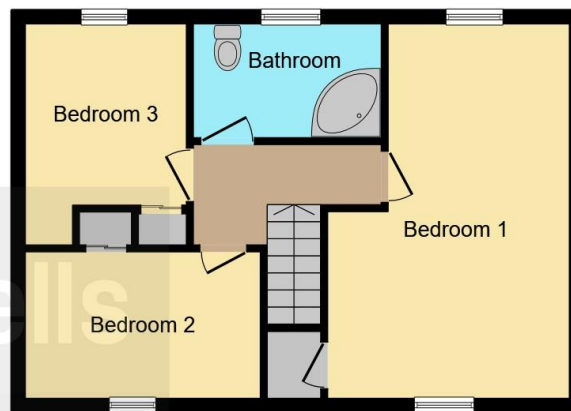
Garage

Accessed via up and over door. Power & light. Double glazed door.





Ground Floor



First Floor

This floor plan is for illustrative purposes only. It is not drawn to scale. Any measurements, floor areas (including any total floor area), openings and orientation are approximate. No details are guaranteed, they cannot be relied upon for any purpose and they do not form part of any agreement. No liability is taken for any error, omission or misstatement. A party must rely upon its own inspection(s). Powered by www.focalagent.com

To view this property please contact Connells on

T 01582 737 069
E stopsley@connells.co.uk

Jansel House Parade 656 Hitchin Road Stopsley
 LUTON LU2 7XH

EPC Rating: Awaiting

view this property online connells.co.uk/Property/STP307479



Tenure: Freehold



1. MONEY LAUNDERING REGULATIONS Intending purchasers will be asked to produce identification documentation at a later stage and we would ask for your co-operation in order that there will be no delay in agreeing the sale. 2. These particulars do not constitute part or all of an offer or contract. 3. The measurements indicated are supplied for guidance only and as such must be considered incorrect. Potential buyers are advised to recheck measurements before committing to any expense. 4. We have not tested any apparatus, equipment, fixtures, fittings or services and it is in the buyers interest to check the working condition of any appliances.

Connells Residential is registered in England and Wales under company number 1489613, Registered Office is Cumbria House, 16-20 Hockliffe Street, Leighton Buzzard, Bedfordshire, LU7 1GN. VAT Registration Number is 500 2481 05.

See all our properties at www.connells.co.uk | www.rightmove.co.uk | www.zoopla.co.uk

Property Ref: STP307479 - 0002