



Connells

Belmont Road  
Luton





## Property Description

Three Bedroom Mid Terrace House Located In The Dallow Road Area Of Luton. The Property Is Ideally Located For Commuters With Luton Mainline Station Only A Mile Away Offering Direct Routes Into London. There Are an Array Of Shops, Bus Routes, Supermarkets and Other Amenities All Nearby Briefly Comprises: Entrance Hall, Lounge, Dining Room, Fitted Kitchen, Utility Area, Bathroom, Landing, Three First Floor Bedrooms, Gas Central Heating and Double Glazing. Outside there are Front and Rear Gardens.

### Entrance

### Entrance Porch

### Entrance Hall

### Lounge/Diner

10' 2" x 13' 3" ( 3.10m x 4.04m )

### Lounge

10' 6" x 11' 7" ( 3.20m x 3.53m )

### Kitchen

9' 1" x 10' 8" ( 2.77m x 3.25m )

### Utility Room

9' 1" x 5' 6" ( 2.77m x 1.68m )

### Bathroom

### W.C

### First Floor Landing

### Bedroom One

14' 8" x 11' 3" ( 4.47m x 3.43m )

### Bedroom Two

9' 5" x 11' 7" ( 2.87m x 3.53m )

### Bedroom Three

9' 1" x 10' 8" ( 2.77m x 3.25m )

### Outside

### Front Garden

### Rear Garden

### Outbuilding

14' 9" x 14' 9" ( 4.50m x 4.50m )



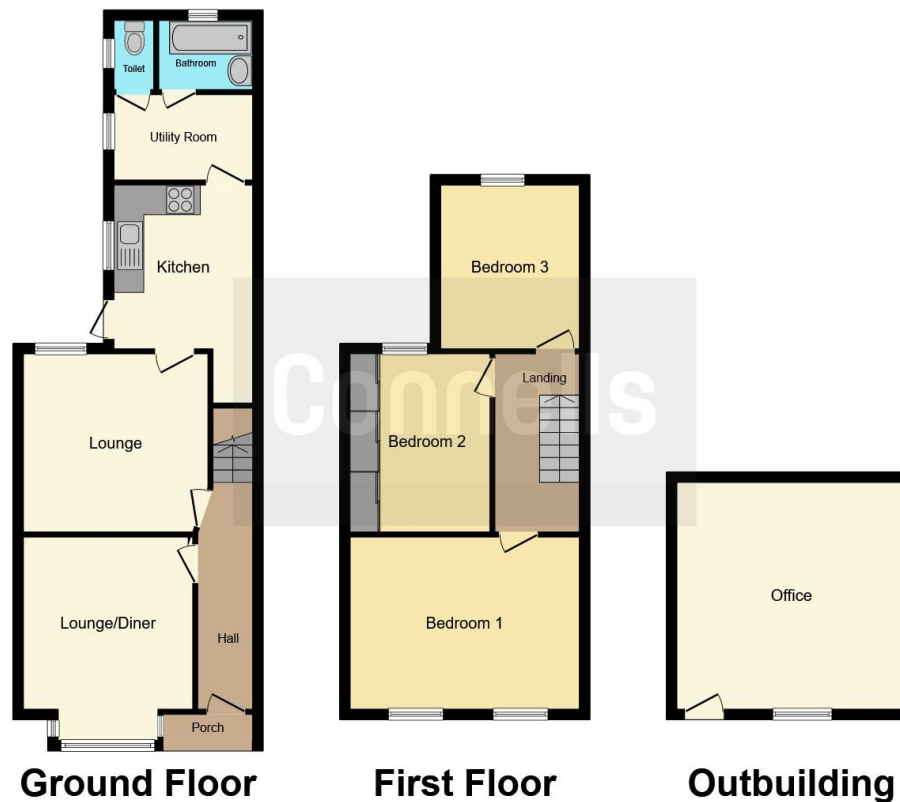












This floor plan is for illustrative purposes only. It is not drawn to scale. Any measurements, floor areas (including any total floor area), openings and orientation are approximate. No details are guaranteed, they cannot be relied upon for any purpose and they do not form part of any agreement. No liability is taken for any error, omission or misstatement. A party must rely upon its own inspection(s). Powered by [www.focalagent.com](http://www.focalagent.com)

To view this property please contact Connells on

**T 01582 450 999**  
**E [luton@connells.co.uk](mailto:luton@connells.co.uk)**

83-83A George Street  
 LUTON LU1 2AT

EPC Rating: D    Council Tax  
 Band: B

Tenure: Freehold

**view this property online** [connells.co.uk/Property/LUT317337](http://connells.co.uk/Property/LUT317337)



1. MONEY LAUNDERING REGULATIONS Intending purchasers will be asked to produce identification documentation at a later stage and we would ask for your co-operation in order that there will be no delay in agreeing the sale. 2. These particulars do not constitute part or all of an offer or contract. 3. The measurements indicated are supplied for guidance only and as such must be considered incorrect. Potential buyers are advised to recheck measurements before committing to any expense. 4. We have not tested any apparatus, equipment, fixtures, fittings or services and it is in the buyers interest to check the working condition of any appliances.

Connells Residential is registered in England and Wales under company number 1489613, Registered Office is Cumbria House, 16-20 Hockliffe Street, Leighton Buzzard, Bedfordshire, LU7 1GN. VAT Registration Number is 500 2481 05.

**See all our properties at [www.connells.co.uk](http://www.connells.co.uk) | [www.rightmove.co.uk](http://www.rightmove.co.uk) | [www.zoopla.co.uk](http://www.zoopla.co.uk)**

Property Ref: LUT317337 - 0003