



Connells

Maple Road East
Luton



Property Description

Offered with NO UPPER CHAIN is this three-bedroom terraced home located in the Bury Park area of Luton. The area is very popular with growing families as there are an array of shops and transportation links close by as well as schools for all ages.

In brief the property comprises of two reception rooms, kitchen and bathroom. To the first floor there are three good size bedrooms. Externally there is a low maintenance rear garden which is mainly laid to lawn.

Entrance

Entrance Hall

Lounge

10' 9" x 10' 8" (3.28m x 3.25m)

Double glazed window to front. Radiator.

Dining Room

10' 9" x 10' 5" (3.28m x 3.17m)

Double glazed door to rear garden. Radiator.

Kitchen

8' 2" x 6' 8" (2.49m x 2.03m)

Fitted with wall and base units. Sink drainer. Work surfaces. Partly tiled. Plumbing and space for appliances. Double glazed window to side aspect.

Bedroom One

13' 7" x 10' 7" (4.14m x 3.23m)

Double glazed window to front. Radiator. Storage cupboard.

Bedroom Two

10' 9" x 10' 8" (3.28m x 3.25m)

Double glazed window to rear. Radiator.

Bedroom Three

11' 3" x 6' 5" (3.43m x 1.96m)

Double glazed window to rear. Radiator.

Bathroom

Fitted with low level wc. Wash hand basin. Bath.

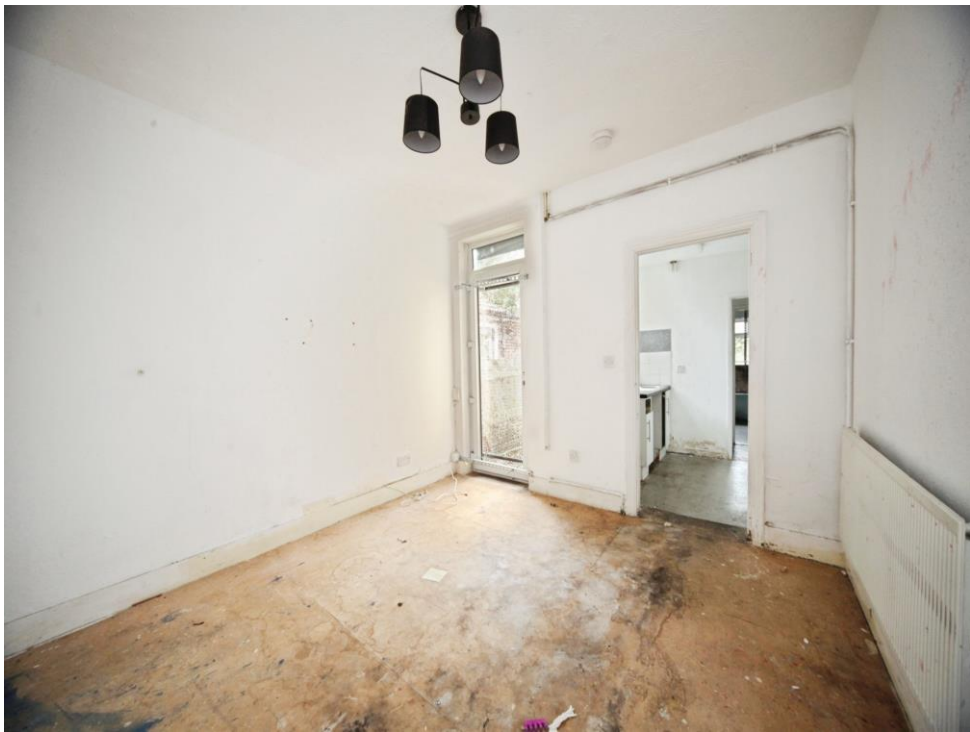
Outside

Front Garden

Rear Garden

Paved pathway. Mainly laid to lawn. Gated access to front.









This floor plan is for illustrative purposes only. It is not drawn to scale. Any measurements, floor areas (including any total floor area), openings and orientation are approximate. No details are guaranteed, they cannot be relied upon for any purpose and they do not form part of any agreement. No liability is taken for any error, omission or misstatement. A party must rely upon its own inspection(s). Powered by www.focalagent.com

To view this property please contact Connells on

T 01582 450 999
E luton@connells.co.uk

83-83A George Street
 LUTON LU1 2AT

EPC Rating: D Council Tax
 Band: B

Tenure: Freehold

view this property online connells.co.uk/Property/LUT317339



1. MONEY LAUNDERING REGULATIONS Intending purchasers will be asked to produce identification documentation at a later stage and we would ask for your co-operation in order that there will be no delay in agreeing the sale. 2. These particulars do not constitute part or all of an offer or contract. 3. The measurements indicated are supplied for guidance only and as such must be considered incorrect. Potential buyers are advised to recheck measurements before committing to any expense. 4. We have not tested any apparatus, equipment, fixtures, fittings or services and it is in the buyers interest to check the working condition of any appliances.

Connells Residential is registered in England and Wales under company number 1489613, Registered Office is Cumbria House, 16-20 Hockliffe Street, Leighton Buzzard, Bedfordshire, LU7 1GN. VAT Registration Number is 500 2481 05.

See all our properties at www.connells.co.uk | www.rightmove.co.uk | www.zoopla.co.uk

Property Ref: LUT317339 - 0003