



Connells

Earls Court Mulberry Close
LUTON

Earls Court Mulberry Close LUTON LU1 1BZ

for sale guide price
£125,000



Property Description

A Well Maintained One Bedroom Top Floor Apartment Situated Close to Transport Links and Amenities. This Ideal First Time Buyers or Investment Opportunity Benefits From a Security Entry Phone, Lounge/Kitchen, Bedroom, Bathroom, Underfloor Heating Throughout and Allocated Parking.

Auctioneer's Comments

This property is offered through Modern Method of Auction. Should you view, offer or bid your data will be shared with the Auctioneer, iamsold Limited. This method requires both parties to complete the transaction within 56 days, allowing buyers to proceed with mortgage finance (subject to lending criteria, affordability and survey).

The buyer is required to sign a reservation agreement and make payment of a non-refundable Reservation Fee of 4.5% of the purchase price including VAT, subject to a minimum of £6600.00 including VAT. This fee is paid in addition to purchase price and will be considered as part of the chargeable consideration for the property in the calculation for stamp duty liability. Buyers will be required to complete an identification process with iamsold and provide proof of how the purchase would be funded.

The property has a Buyer Information Pack containing documents about the property. The documents may not tell you everything you need to know, so you must complete your own due diligence before bidding. A sample of the Reservation Agreement and terms and conditions are contained within this pack. The buyer will also make payment of no more than £349 inc. VAT towards the preparation cost of the pack. Please confirm exact costs with the auctioneer.

The estate agent and auctioneer may recommend the services of other providers to you, in which they will be paid for the referral. These services are optional, and you will be advised of any payment, in writing before any

services are accepted. Listing is subject to a start price and undisclosed reserve price that can change.

Entrance Hall

Front door. Loft hatch.

Lounge/kitchen

18' max x 9' 3" max (5.49m max x 2.82m max)

Double glazed window to front. Juliet balcony. Radiator. TV point. Storage cupboard. Stainless steel sink unit with mixer taps and drainer. Range of wall and base units with work surfaces. Electric oven and hob with cooker hood. Plumbing. Integrated fridge/freezer and washing machine.

Bedroom 1

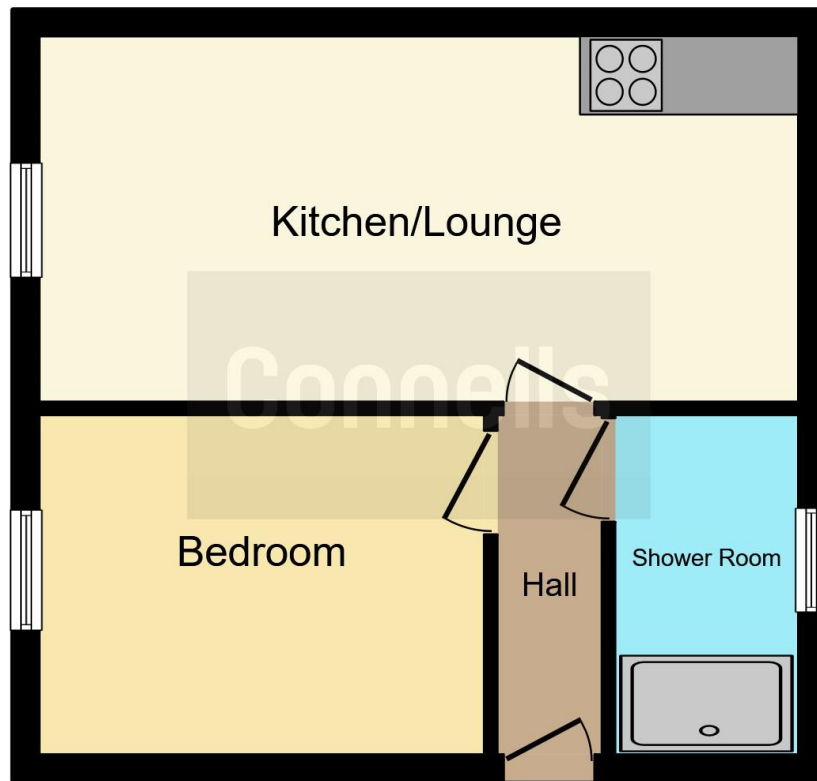
10' 3" x 8' 5" (3.12m x 2.57m)

Double glazed window to front. Radiator.

Bathroom

Extractor fan. Low level WC with wash hand basin in vanity. Heated towel radiator. Shower in cupboard.





This floorplan is for illustrative purposes only and is not drawn to scale. Measurements, floor-areas, openings and orientations are approximate. They should not be relied upon for any purpose and do not form any part of an agreement. No liability is taken for any error or mis-statement. All parties must rely on their own inspections.

To view this property please contact Connells on

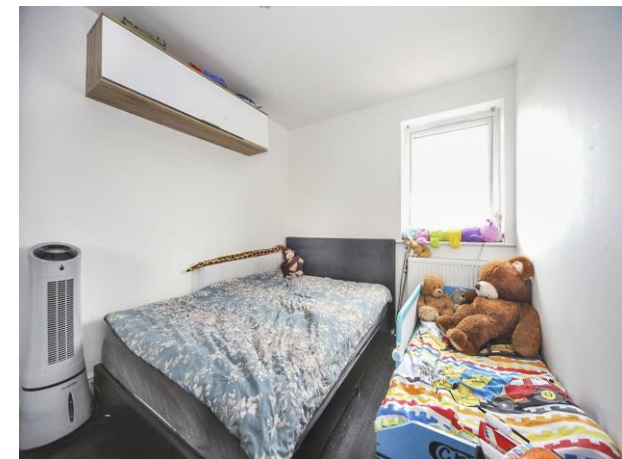
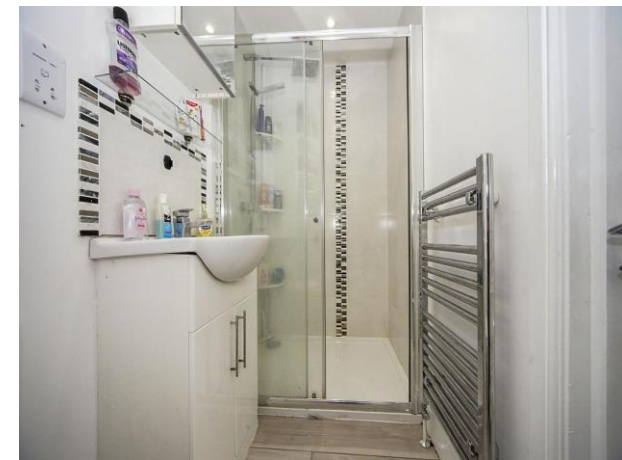
T 01582 450 999
E luton@connells.co.uk

83-83A George Street
 LUTON LU1 2AT

EPC Rating: B

view this property online [connells.co.uk/Property/LUT314399](https://www.connells.co.uk/Property/LUT314399)

This is a Leasehold property. We are awaiting further details about the Term of the lease. For further information please contact the branch. Please note additional fees could be incurred for items such as Leasehold packs.



Tenure: Leasehold



1. MONEY LAUNDERING REGULATIONS Intending purchasers will be asked to produce identification documentation at a later stage and we would ask for your co-operation in order that there will be no delay in agreeing the sale. 2. These particulars do not constitute part or all of an offer or contract. 3. The measurements indicated are supplied for guidance only and as such must be considered incorrect. Potential buyers are advised to recheck measurements before committing to any expense. 4. We have not tested any apparatus, equipment, fixtures, fittings or services and it is in the buyers interest to check the working condition of any appliances.

Connells Residential is registered in England and Wales under company number 1489613, Registered Office is Cumbria House, 16-20 Hockliffe Street, Leighton Buzzard, Bedfordshire, LU7 1GN. VAT Registration Number is 500 2481 05.

See all our properties at www.connells.co.uk | www.rightmove.co.uk | www.zoopla.co.uk

Property Ref: LUT314399 - 0013