



Connells

Carlton Crescent
Luton



Property Description

This Four Bedroom Semi Detached Property Situated in the Wardown Park Area. This Property Benefits From a Large Lounge, Dining Room, Kitchen & Utility
The First Floor consists of Three Good Size Bedrooms & Family Bathroom.
Located in the Denbigh High School Catchment Area, This Property Is Ideal As a Family Home.

Ground Floor

Entrance Hall

Double glazed door to front. Stairs rising to first floor. Radiator. Door to garage.

Lounge

Bay window to front. Fire place. TV and Telephone point. Radiator.

Dining Room

Double glazed bay window to rear. Fireplace. Radiator.

Kitchen

Fitted with wall and base units. Stainless steel sink drainer. Work surfaces. Plumbing and space for appliances. Radiator. Partly tiled. Double glazed window to side.

Utility

Fitted with base units. Double glazed window to rear.

First Floor Landing

Double glazed window to side. Stair rising to second floor.

Bedroom One

Bay window to front. Built in wardrobes. Radiator.

Bedroom Three

Double glazed window to rear. Radiator.

Bedroom Four

Double glazed window to rear. Radiator.

Bathroom

Fitted with low level wc. Wash hand basin. Bath with mixer taps and shower attachment. Partly tiled. Double glazed window to front.

Second Floor Landing

Bedroom Two

Double glazed window to side. Storage cupboards

Outside

Front Garden

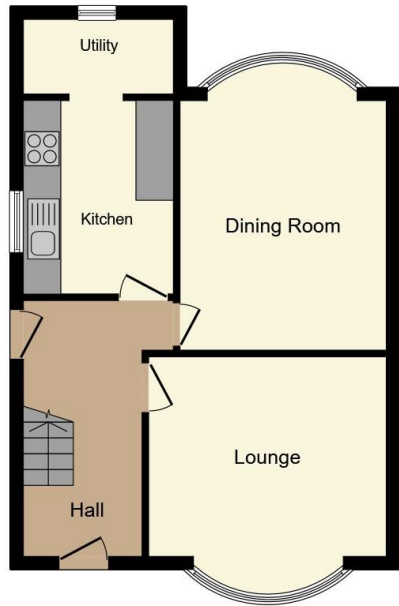
Enclosed by brick built wall. Laid to lawn. Off street parking. Access to garage.

Rear Garden

Enclosed by paneled fencing. Laid to lawn.

Garage

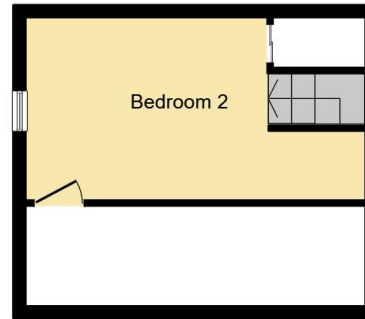




Ground Floor



First Floor



Second Floor



This floor plan is for illustrative purposes only. It is not drawn to scale. Any measurements, floor areas (including any total floor area), openings and orientation are approximate. No details are guaranteed, they cannot be relied upon for any purpose and they do not form part of any agreement. No liability is taken for any error, omission or misstatement. A party must rely upon its own inspection(s). Powered by www.focalagent.com

To view this property please contact Connells on

T 01582 450 999
E luton@connells.co.uk

83-83A George Street
 LUTON LU1 2AT

EPC Rating: D

view this property online connells.co.uk/Property/LUT316315

Tenure: Freehold



1. MONEY LAUNDERING REGULATIONS Intending purchasers will be asked to produce identification documentation at a later stage and we would ask for your co-operation in order that there will be no delay in agreeing the sale. 2. These particulars do not constitute part or all of an offer or contract. 3. The measurements indicated are supplied for guidance only and as such must be considered incorrect. Potential buyers are advised to recheck measurements before committing to any expense. 4. We have not tested any apparatus, equipment, fixtures, fittings or services and it is in the buyers interest to check the working condition of any appliances.

Connells Residential is registered in England and Wales under company number 1489613, Registered Office is Cumbria House, 16-20 Hockliffe Street, Leighton Buzzard, Bedfordshire, LU7 1GN. VAT Registration Number is 500 2481 05.

See all our properties at www.connells.co.uk | www.rightmove.co.uk | www.zoopla.co.uk

Property Ref: LUT316315 - 0002