



Connells

Rockley Road
Luton



Property Description

Located within the FARLEY HILL ages of Luton is this sought after TWO bedroom end of terraced home. The location offers masses of amenities as there are shops, schools and transportation links within close proximity.

In brief the property comprises of an entrance hall, lounge/diner, kitchen on the ground floor. Two double bedrooms on the first floor with a three piece bathroom.

Externally there is a private rear garden and street parking to the front.

Call now to view!!

Entrance

Paved pathway to front entrance.

Entrance Hall

Double glazed window to front. Radiator. Stairs rising to first floor.

Lounge

19' 5" x 11' 5" (5.92m x 3.48m)

Double glazed window to front and rear. Radiator. Fireplace. Fitted carpet.

Kitchen

10' 5" x 7' 6" (3.17m x 2.29m)

Fitted with base units. Sink drainer. Work surfaces. Plumbing and space for appliances. Storage cupboards. Double glazed window to rear. Door to rear garden.

Landing

Double glazed window to side.

Bedroom One

15' 4" x 9' 3" (4.67m x 2.82m)

Double glazed window to front. Radiator. Built in cupboard.

Bedroom Two

12' x 9' 6" (3.66m x 2.90m)

Double glazed window to rear. Radiator.

W.C

Fitted with low level wc.

Bathroom

Fitted with bath with mixer taps and shower attachment. Wash hand basin. Radiator. Double glazed window to rear.

Outside

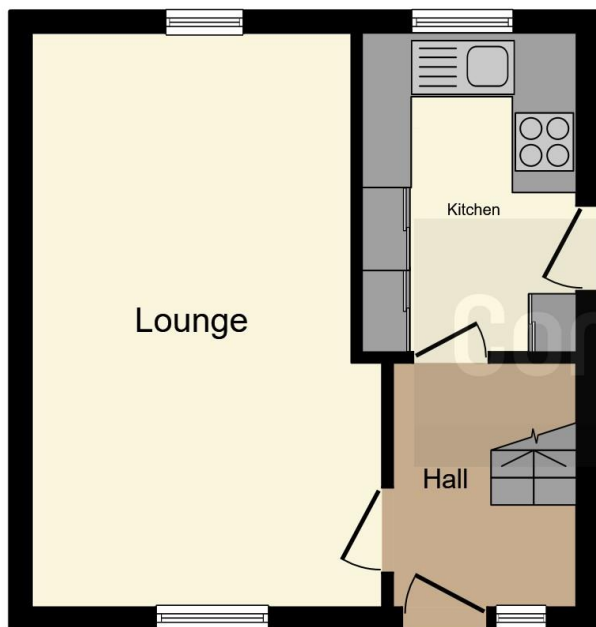
Front Garden

Gated access. Shrub and hedge border. Paved pathway to entrance. Enclosed by panelled fencing. Partly laid to lawn. Gravelled

Rear Garden

Enclosed by panelled fencing. Partly laid to lawn. Gravelled. Paved pathway to storage shed.





Ground Floor



First Floor

This floor plan is for illustrative purposes only. It is not drawn to scale. Any measurements, floor areas (including any total floor area), openings and orientation are approximate. No details are guaranteed, they cannot be relied upon for any purpose and they do not form part of any agreement. No liability is taken for any error, omission or misstatement. A party must rely upon its own inspection(s). Powered by www.focalagent.com

To view this property please contact Connells on

T 01582 450 999
E luton@connells.co.uk

83-83A George Street
 LUTON LU1 2AT

EPC Rating: E

view this property online connells.co.uk/Property/LUT316558



Tenure: Freehold



1. MONEY LAUNDERING REGULATIONS Intending purchasers will be asked to produce identification documentation at a later stage and we would ask for your co-operation in order that there will be no delay in agreeing the sale. 2. These particulars do not constitute part or all of an offer or contract. 3. The measurements indicated are supplied for guidance only and as such must be considered incorrect. Potential buyers are advised to recheck measurements before committing to any expense. 4. We have not tested any apparatus, equipment, fixtures, fittings or services and it is in the buyers interest to check the working condition of any appliances.

Connells Residential is registered in England and Wales under company number 1489613, Registered Office is Cumbria House, 16-20 Hockliffe Street, Leighton Buzzard, Bedfordshire, LU7 1GN. VAT Registration Number is 500 2481 05.

See all our properties at www.connells.co.uk | www.rightmove.co.uk | www.zoopla.co.uk

Property Ref: LUT316558 - 0005