





Property Description

**** Are you a first-time buyer looking to get on the property ladder? Are you a seasoned investor looking to add to your portfolio? Look no further!!!

Offered with no upper Chain is this ONE bedroom first floor flat. The area is very popular as the LUTON town centre and transport links.

In brief the property comprises of a communal entrance, entrance hall, open plan lounge, bedroom and bathroom.

CALL NOW TO VIEW!!!

Entrance Hall

Door to front.

Open Plan Living

Kitchen / Lounge

Fitted with wall and base units. Stainless steel sink drainer. Work surfaces. Electric oven. Gas hob. Cooker hood. Plumbing and space for appliances. Radiator. Partly tiled. Double glazed window to rear and side.

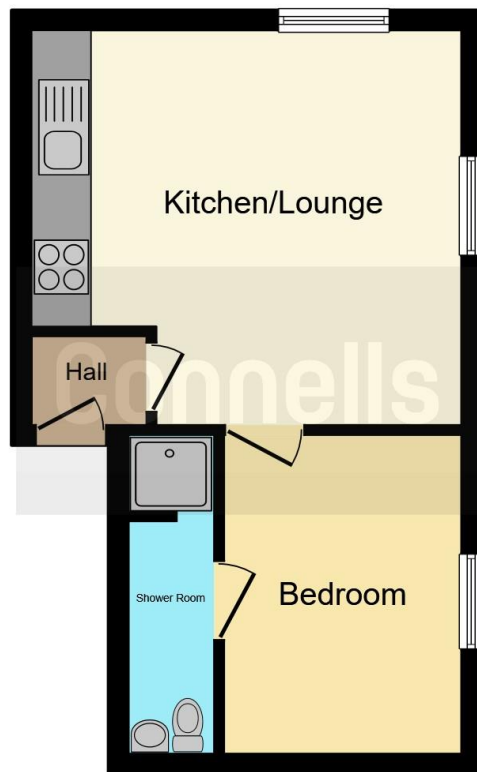
Bedroom One

Double glazed window to side. Radiator. Door to shower room.

Shower Room

Fitted with low level wc. Wash hand basin. Shower cubicle. Partly tiled.





This floor plan is for illustrative purposes only. It is not drawn to scale. Any measurements, floor areas (including any total floor area), openings and orientation are approximate. No details are guaranteed, they cannot be relied upon for any purpose and they do not form part of any agreement. No liability is taken for any error, omission or misstatement. A party must rely upon its own inspection(s). Powered by www.focalagent.com



To view this property please contact Connells on

T 01582 450 999
E luton@connells.co.uk

83-83A George Street
LUTON LU1 2AT

EPC Rating: C

view this property online connells.co.uk/Property/LUT316340

This is a Leasehold property. We are awaiting further details about the Term of the lease. For further information please contact the branch. Please note additional fees could be incurred for items such as Leasehold packs.

Tenure: Leasehold



1. MONEY LAUNDERING REGULATIONS Intending purchasers will be asked to produce identification documentation at a later stage and we would ask for your co-operation in order that there will be no delay in agreeing the sale. 2. These particulars do not constitute part or all of an offer or contract. 3. The measurements indicated are supplied for guidance only and as such must be considered incorrect. Potential buyers are advised to recheck measurements before committing to any expense. 4. We have not tested any apparatus, equipment, fixtures, fittings or services and it is in the buyers interest to check the working condition of any appliances.

Connells Residential is registered in England and Wales under company number 1489613, Registered Office is Cumbria House, 16-20 Hockliffe Street, Leighton Buzzard, Bedfordshire, LU7 1GN. VAT Registration Number is 500 2481 05.

See all our properties at www.connells.co.uk | www.rightmove.co.uk | www.zoopla.co.uk

Property Ref: LUT316340 - 0003