



Connells

Bradley Road
Luton



Property Description

****Are you looking for a family home in a popular location**** Look no further!!! This three-bedroom family home is located in the sought after Challney area of Luton. This family home is located close to both Challney Girls and Boys school as well as J11 of the M1.

In brief the property comprises of an entrance hall, two reception rooms AND a conservatory, providing plenty of space for entertaining guests.

To the second floor are three good sized bedrooms and a family bathroom. Externally to the front is a paved garden, and to the rear a mainly laid to lawn garden in with trees and brick built storage shed. CALL NOW TO VIEW!!!

Entrance

Paved pathway to front door.

Entrance Hall

Door to front. Stairs rising to first floor.

Lounge

13' 1" x 10' 9" (3.99m x 3.28m)
Double glazed bay window to front. Radiator. TV and Telephone point.

Kitchen

13' 1" x 6' 2" (3.99m x 1.88m)
Fitted with wall and base units. Sink drainer. Work surfaces. Partly tiled. Plumbing and space for appliances. Extractor fan. Double glazed window to rear. Double glazed door to rear.

Dining Room

12' 9" x 9' 6" (3.89m x 2.90m)
Double glazed window to rear. Radiator.

Conservatory

Brick built. Tiled flooring. Double glazed patio door and windows to rear.

Landing

Stairs rising from entrance hall. Loft access.

Bedroom One

13' 1" x 10' 9" (3.99m x 3.28m)
Double glazed bay window to front. Built in wardrobe. Radiator.

Bedroom Two

13' 1" x 10' 9" (3.99m x 3.28m)
Double glazed window to rear. Built in wardrobe. Radiator.

Bedroom Three

13' 1" x 10' 9" (3.99m x 3.28m)
Double glazed window to rear. Radiator.

Bathroom

Fitted with low level wc. Wash hand basin. Bath with mixer taps. Extractor fan. Fully tiled. Double glazed window to front.

Outside

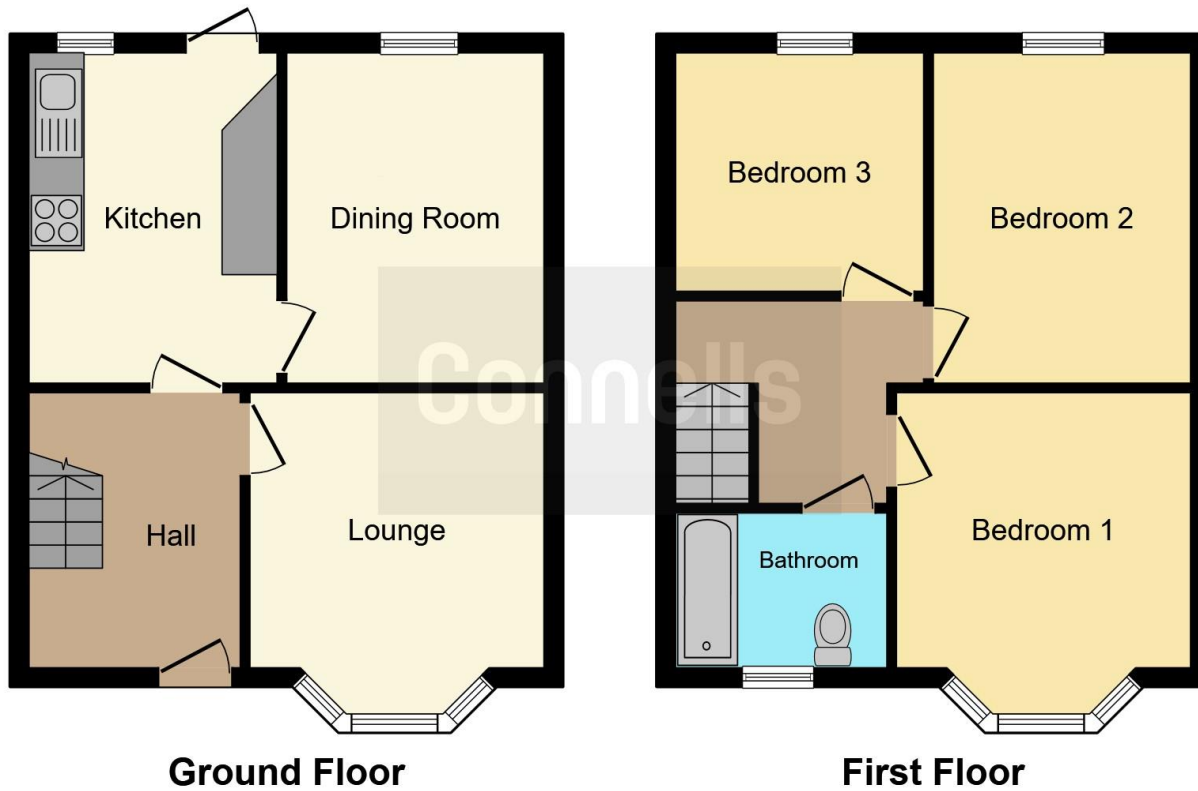
Front Garden

Gated access. Paved courtyard.

Rear Garden

Enclosed by brick and panelled fencing. Shed.





This floor plan is for illustrative purposes only. It is not drawn to scale. Any measurements, floor areas (including any total floor area), openings and orientation are approximate. No details are guaranteed, they cannot be relied upon for any purpose and they do not form part of any agreement. No liability is taken for any error, omission or misstatement. A party must rely upon its own inspection(s). Powered by www.focalagent.com

To view this property please contact Connells on

T 01582 450 999
E luton@connells.co.uk

83-83A George Street
 LUTON LU1 2AT

EPC Rating: D

view this property online connells.co.uk/Property/LUT314942

Tenure: Freehold



1. MONEY LAUNDERING REGULATIONS Intending purchasers will be asked to produce identification documentation at a later stage and we would ask for your co-operation in order that there will be no delay in agreeing the sale. 2. These particulars do not constitute part or all of an offer or contract. 3. The measurements indicated are supplied for guidance only and as such must be considered incorrect. Potential buyers are advised to recheck measurements before committing to any expense. 4. We have not tested any apparatus, equipment, fixtures, fittings or services and it is in the buyers interest to check the working condition of any appliances.

Connells Residential is registered in England and Wales under company number 1489613, Registered Office is Cumbria House, 16-20 Hockliffe Street, Leighton Buzzard, Bedfordshire, LU7 1GN. VAT Registration Number is 500 2481 05.

See all our properties at www.connells.co.uk | www.rightmove.co.uk | www.zoopla.co.uk

Property Ref: LUT314942 - 0003