



Connells

Dorrington Close
Luton



Property Description

Located within easy reach of Luton town centre, railway station and all amenities Connells offer this on bedroom Cluster house. Ideal for a first time buyer or buy to let investor.

The property briefly comprises; Entrance hall, Lounge, and kitchen to the ground floor, one bedrooms upstairs with a family bathroom, and externally the property benefits from a good sized front garden and off street parking.

Entrance

Door to front. Door to lounge.

Lounge

14' 5" x 10' 6" (4.39m x 3.20m)

Double glazed bay window to side. Radiator. Door to kitchen. Stairs rising to first floor.

Kitchen

8' 3" x 6' 6" (2.51m x 1.98m)

Fitted with wall and base units. Sink drainer. Work surfaces. Gas Hob. Electric oven. Plumbing and space for appliances. Boiler. Storage cupboard. Double glazed window to side.

Landing

Loft hatch.

Bedroom One

11' 7" x 10' 8" (3.53m x 3.25m)

Double glazed window to side. Built in cupboard. Radiator.

Bathroom

Fitted with low level wc. Wash hand basin. Bath with mixer taps. Radiator. Double glazed window to side.

Outside

Front Garden

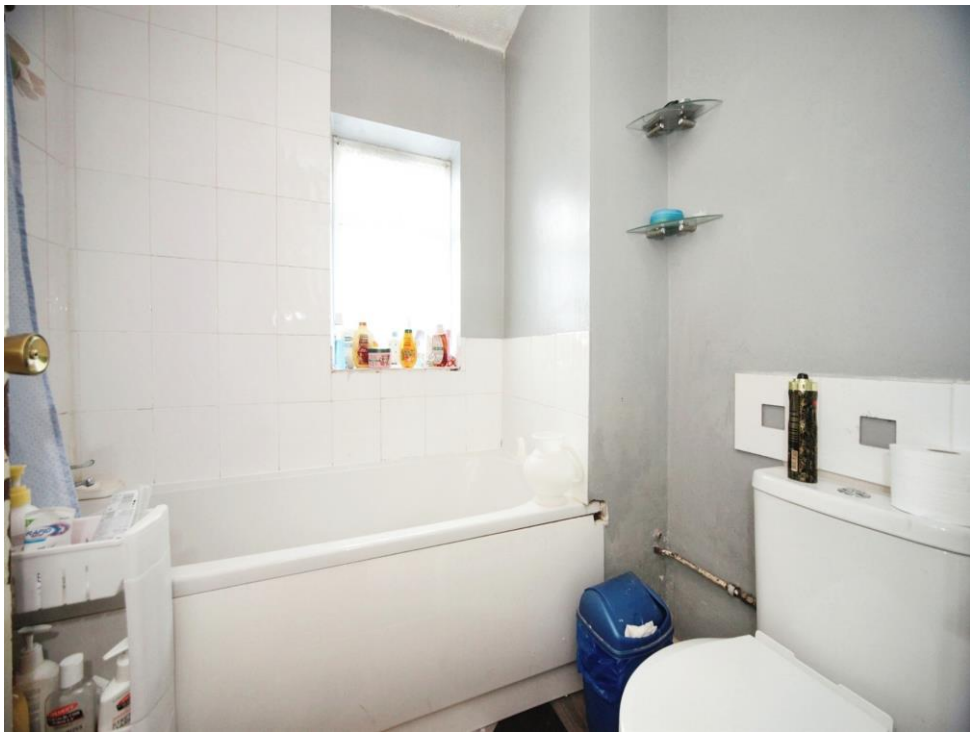
Laid to lawn. Storage cupboard.

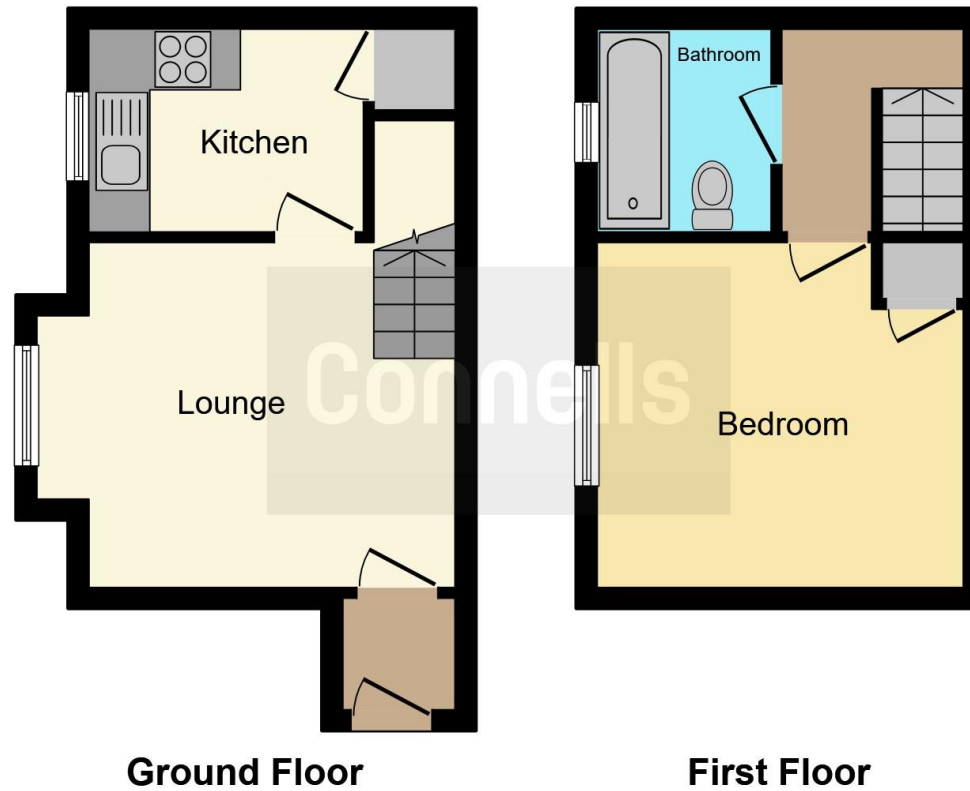
Rear Garden

Parking

Off street parking.







This floor plan is for illustrative purposes only. It is not drawn to scale. Any measurements, floor areas (including any total floor area), openings and orientation are approximate. No details are guaranteed, they cannot be relied upon for any purpose and they do not form part of any agreement. No liability is taken for any error, omission or misstatement. A party must rely upon its own inspection(s). Powered by www.focalagent.com

To view this property please contact Connells on

T 01582 450 999
E luton@connells.co.uk

83-83A George Street
 LUTON LU1 2AT

EPC Rating: D

Tenure: Freehold

view this property online connells.co.uk/Property/LUT316124



1. MONEY LAUNDERING REGULATIONS Intending purchasers will be asked to produce identification documentation at a later stage and we would ask for your co-operation in order that there will be no delay in agreeing the sale. 2. These particulars do not constitute part or all of an offer or contract. 3. The measurements indicated are supplied for guidance only and as such must be considered incorrect. Potential buyers are advised to recheck measurements before committing to any expense. 4. We have not tested any apparatus, equipment, fixtures, fittings or services and it is in the buyers interest to check the working condition of any appliances.

Connells Residential is registered in England and Wales under company number 1489613, Registered Office is Cumbria House, 16-20 Hockliffe Street, Leighton Buzzard, Bedfordshire, LU7 1GN. VAT Registration Number is 500 2481 05.

See all our properties at www.connells.co.uk | www.rightmove.co.uk | www.zoopla.co.uk

Property Ref: LUT316124 - 0002