

for sale

£250,000



Connaught Road Luton LU4 8EP

We are delighted to offer this 2 bedroom mid terrace property located within great links to the Motorway and local amenities. The property briefly comprises of: entrance hall, lounge, kitchen-diner, 2 bedrooms and family bathroom.



Connaught Road Luton LU4 8EP

Entrance Hall

Door to front.

Lounge

13' 2" x 11' 2" (4.01m x 3.40m)

Double glazed bay window to front. Radiator. Gas fire. TV point. Door to kitchen. Storage cupboard.

Kitchen / Diner

10' 4" x 14' 4" (3.15m x 4.37m)

Fitted with wall and base units. Sink drainer. Work surfaces. Plumbing and space for appliances. Double glazed window and door to rear.

Landing

Loft hatch

Bedroom One

14' 5" x 9' 3" (4.39m x 2.82m)

Double glazed window to front. Radiator

Bedroom Two

11' 9" x 8' 9" (3.58m x 2.67m)

Double glazed window to rear. Radiator

Bathroom

Fitted with low level wc. Wash hand basin. Bath with mixer taps. Double glazed window to rear.



Outside

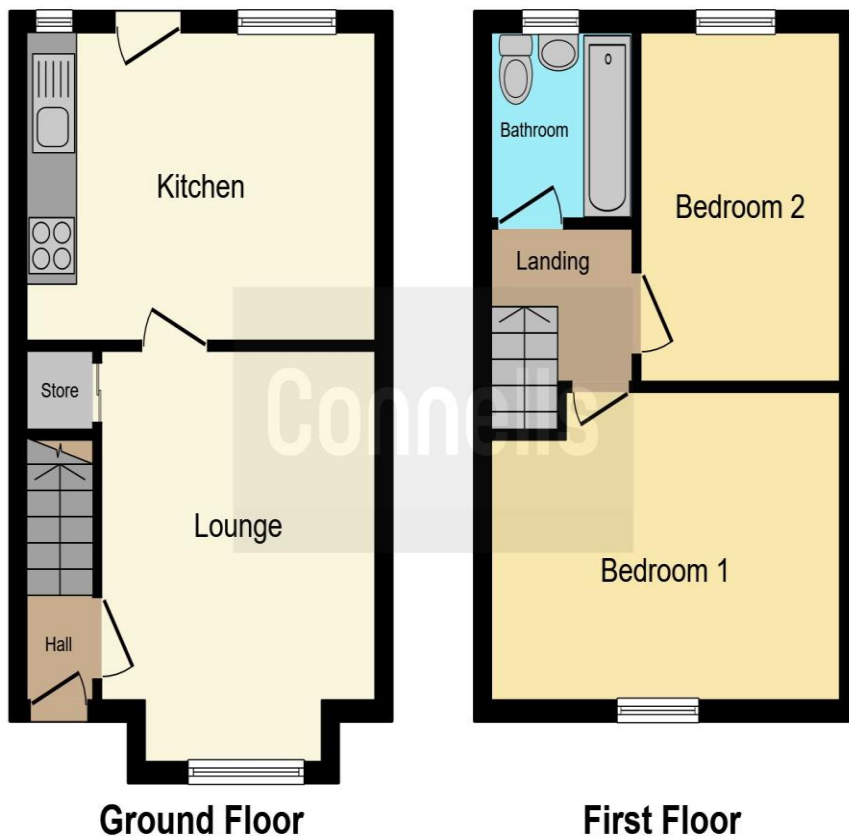
Front Garden

Paved pathway to front door. Laid to lawn.

Rear Garden

Paved patio area. Laid to lawn. Access to side.





This floor plan is for illustrative purposes only. It is not drawn to scale. Any measurements, floor areas (including any total floor area), openings and orientation are approximate. No details are guaranteed, they cannot be relied upon for any purpose and they do not form part of any agreement. No liability is taken for any error, omission or misstatement. A party must rely upon its own inspection(s). Powered by www.focalagent.com

To view this property please contact Connells on

T 01582 450 999
E luton@connells.co.uk

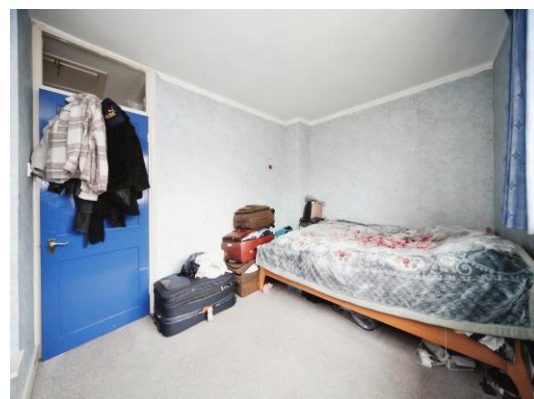
83-83A George Street
 LUTON LU1 2AT

Property Ref: LUT316146 - 0003

Tenure: Freehold

EPC Rating: C

view this property online connells.co.uk/Property/LUT316146



1. MONEY LAUNDERING REGULATIONS Intending purchasers will be asked to produce identification documentation at a later stage and we would ask for your co-operation in order that there will be no delay in agreeing the sale. 2. These particulars do not constitute part or all of an offer or contract. 3. The measurements indicated are supplied for guidance only and as such must be considered incorrect. Potential buyers are advised to recheck measurements before committing to any expense. 4. We have not tested any apparatus, equipment, fixtures, fittings or services and it is in the buyers interest to check the working condition of any appliances.

Connells Residential is registered in England and Wales under company number 1489613, Registered Office is Cumbria House, 16-20 Hockliffe Street, Leighton Buzzard, Bedfordshire, LU7 1GN. VAT Registration Number is 500 2481 05.

see all our properties at www.connells.co.uk | www.rightmove.co.uk | www.zoopla.co.uk