

for sale

£165,000 Leasehold



The Elms John Street Luton LU1 2EE

A Stunning Ground Floor Apartment Situated in a Private Development Close to the Town Centre and Train Station. Internally the Property Benefits From a Spacious Lounge/Kitchen, Double Bedroom, Shower Room and Communal Area



Residential Sales & Lettings | Mortgage Services |
Conveyancing | Surveyors | Land & New Homes

Property Details

Entrance Hall

Door to front. Radiator. Storage cupboard.

Cloakroom

Shower cubicle. Partly Tiled.

Lounge

Access to rear. Radiator.

Kitchen

Fitted with wall and base units. Sink drainer. Work surfaces. Electric oven & hob. Cooker hood. Plumbing and space for appliances, Double glazed window to front.

Bedroom One

Double glazed window to side aspect. Storage cupboard. Access to communal gardens

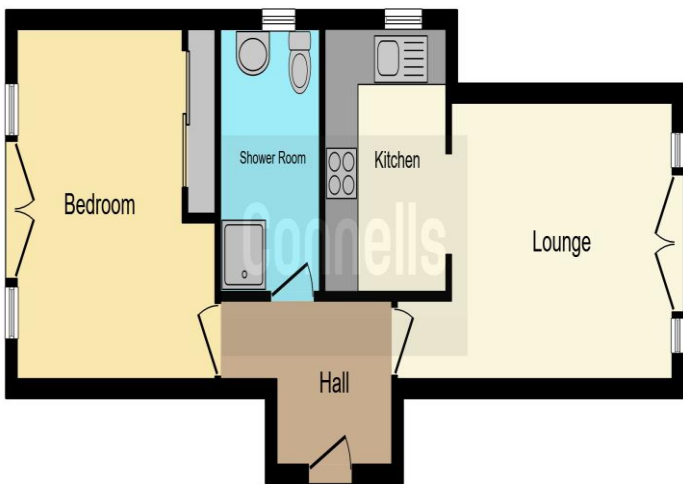
Bathroom

Fitted with low level wc. Vanity unit. Shower cubicle. Double glazed window to rear aspect.

Outside

Communal Gardens





This floorplan is for illustrative purposes only and is not drawn to scale. Measurements, floor-areas, openings and orientations are approximate. They should not be relied upon for any purpose and do not form any part of an agreement. No liability is taken for any error or mis-statement. All parties must rely on their own inspections.

To view this property please contact Connells on

T 01582 450 999
E luton@connells.co.uk

83-83A George Street
LUTON LU1 2AT

Tenure: Leasehold

EPC Rating: B

Property Ref: LUT315689 - 0003

This is a Leasehold property with details as follows; Term of Lease 125 years from 25 Mar 2017. Should you require further information please contact the branch. Please Note additional fees could be incurred for these services as Leasehold costs

1. MONEY LAUNDERING REGULATIONS Intending purchasers will be asked to produce identification documentation at a later stage and we would ask for your co-operation in order that there will be no delay in agreeing the sale. 2. These particulars do not constitute part or all of an offer or contract. 3. The measurements indicated are supplied for guidance only and as such must be considered incorrect. Potential buyers are advised to recheck measurements before committing to any expense. 4. We have not tested any apparatus, equipment, fixtures, fittings or services and it is in the buyers interest to check the working condition of any appliances.

Connells Residential is registered in England and Wales under company number 1489613, Registered Office is Cumbria House, 16-20 Hockliffe Street, Leighton Buzzard, Bedfordshire, LU7 1GN. VAT Registration Number is 500 2481 05.

see all our properties at www.connells.co.uk | www.rightmove.co.uk | www.zoopla.co.uk