



**Connells**

Therfield Walk  
Houghton Regis Dunstable



# Therfield Walk Houghton Regis Dunstable LU5 5QB

for sale guide price  
**£300,000**



## Property Description

**\*THREE BEDROOM END-DETACHED\***  
**\*GARAGE AND ALLOCATED PARKING TO THE REAR\*** **\*EXCELLENT A5/M1 COMMUTER ACCESS\***

Connells are pleased to present this spacious three bedroom property situated in a quite area of Houghton Regis.

The properties accommodation comprises; entrance hall, kitchen, diner, lounge with door leading to rear garden. Upstairs features three goodsize bedrooms and family bathroom. Outside the property benefits from front and rear gardens with garage and parking to the rear.

Call now to arrange your viewing....

## Entrance Hall

Door to front aspect

## Lounge

15' 1" x 11' 1" ( 4.60m x 3.38m )

Window to front aspect, double radiator, TV point, laminate flooring.

## Dining Room

9' 9" x 8' 9" ( 2.97m x 2.67m )

Window to rear aspect, double glazed sliding patio doors leading out to rear garden, single radiator, laminate flooring.

## Kitchen

9' 8" x 9' 1" ( 2.95m x 2.77m )

Fitted kitchen, wall and base units, double glazed window to rear aspect, work surfaces, one bowl sink / drainer, cooker hood, space for oven and hob, space for fridge and freezer, space for washing machine.

## Landing

## Bedroom One

9' 11" x 9' 2" ( 3.02m x 2.79m )

Window to front aspect, radiator, laminate flooring

## Bedroom Two

9' 6" x 8' 7" ( 2.90m x 2.62m )

Window to rear aspect, radiator, laminate flooring

## Bedroom Three

9' 6" x 8' 7" ( 2.90m x 2.62m )

Window to rear aspect, radiator, laminate flooring

## Bathroom

Window to rear aspect, bath with overhead shower, w/c, wash hand basin.

## Outside

## Front Garden

Laid to lawn, hedge, pathway

## Rear Garden

Laid to lawn, patio

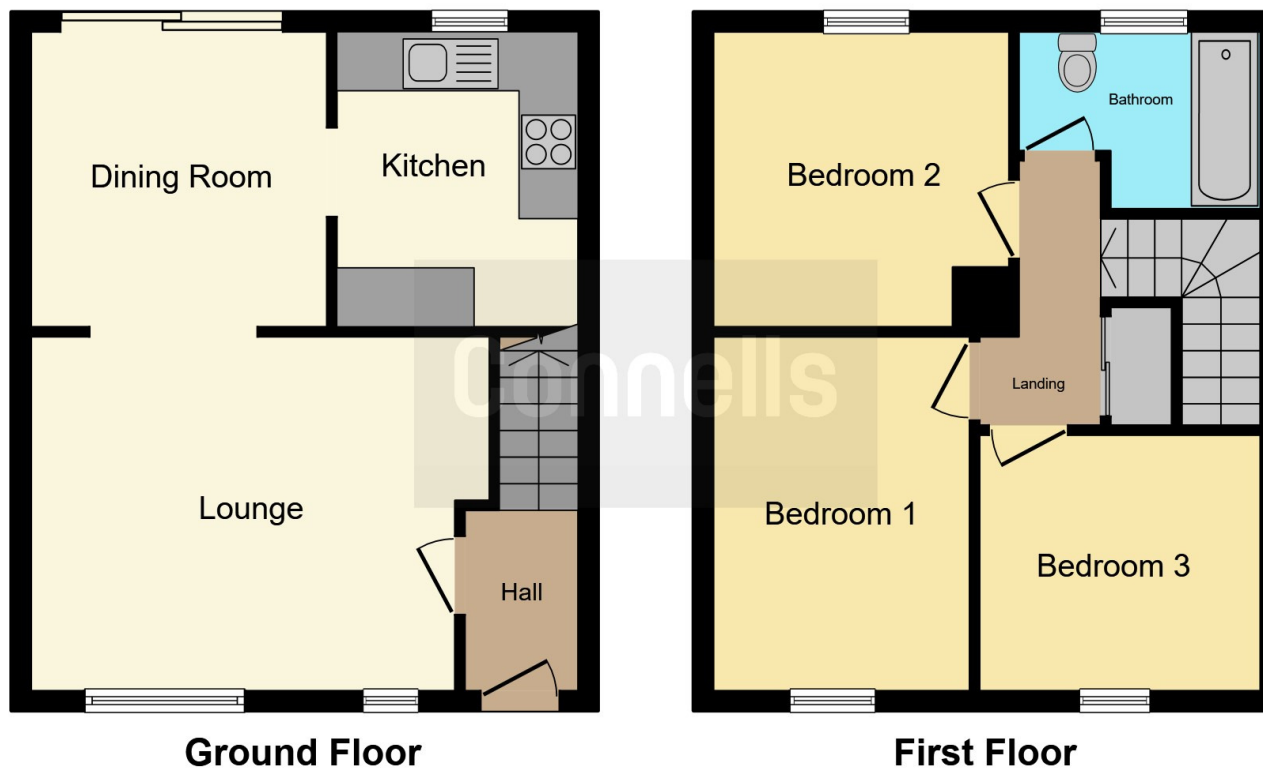












This floor plan is for illustrative purposes only. It is not drawn to scale. Any measurements, floor areas (including any total floor area), openings and orientation are approximate. No details are guaranteed, they cannot be relied upon for any purpose and they do not form part of any agreement. No liability is taken for any error, omission or misstatement. A party must rely upon its own inspection(s). Powered by [www.focalagent.com](http://www.focalagent.com)

To view this property please contact Connells on

**T 01582 661 265**  
**E [dunstable@connells.co.uk](mailto:dunstable@connells.co.uk)**

19 High Street North  
 DUNSTABLE LU6 1HX

**EPC Rating: C**

Tenure: Freehold

**view this property online** [connells.co.uk/Property/DUN311400](http://connells.co.uk/Property/DUN311400)



1. MONEY LAUNDERING REGULATIONS Intending purchasers will be asked to produce identification documentation at a later stage and we would ask for your co-operation in order that there will be no delay in agreeing the sale. 2. These particulars do not constitute part or all of an offer or contract. 3. The measurements indicated are supplied for guidance only and as such must be considered incorrect. Potential buyers are advised to recheck measurements before committing to any expense. 4. We have not tested any apparatus, equipment, fixtures, fittings or services and it is in the buyers interest to check the working condition of any appliances.

Connells Residential is registered in England and Wales under company number 1489613, Registered Office is Cumbria House, 16-20 Hockliffe Street, Leighton Buzzard, Bedfordshire, LU7 1GN. VAT Registration Number is 500 2481 05.

**See all our properties at** [www.connells.co.uk](http://www.connells.co.uk) | [www.rightmove.co.uk](http://www.rightmove.co.uk) | [www.zoopla.co.uk](http://www.zoopla.co.uk)

Property Ref: DUN311400 - 0005